



KAILASH WOMEN'S COLLEGE

(Affiliated to Periyar University, Salem) (An ISO 9001:2015 Certified Institution) Nangavalli, Salem - 636502

1.4.1 Institution obtains feedback on the syllabus and its transaction at the institution

INTERNAL QUALITY ASSURANCE CELL FEEDBACK ANALYSIS (2021-22)

Our college regularly collects feedback from the students which comprises of syllabus completion, communication skills, teaching methodology and others in various aspects. Feedback is received from students, teachers, employers and alumni during various meetings held in each academic session. Feedback forms are available in our college website so that the students can voice out whenever an issue is raised.

FEEDBACK ANALYSIS – STUDENTS

IQAC collected feedback from students regarding syllabus completion, communication skills, teaching methodology and others in various aspects. The representations of feedback analysis report are as follow.

Summary table for student Feedback (2021-22)

Sl.No	Particulars	Excellent	Good	Average	Fair
1	Did you find the syllabus easy to follow?	53.93%	44.97%	0.65%	0.42%
2	Was the entire syllabus covered in the class by teacher?	54.21%	44.81%	0.81%	0%
3	Were the units / sections in the syllabus properly sequenced?	54.21%	44.66%	0.89%	0.23%
4	How well did the syllabus equip you with necessary technical skills to face the industry?	54.55%	44.54%	0.89%	0%
5	How do you take the sequence of the units in the course?	54.17%	45.13%	0.69%	0%
6	Was the depth of the course content adequate in relation to the expected course outcomes?	54.79%	50.06%	0.27%	0%
7	What do you say about the library for using text books?	49.90%	49.24%	0.81%	0%
8	What do you think about the lab facilities of the course that you are studying?	54.63%	44.85%	0.50%	0%
9	How helpful was the career guidance and counseling provided by faculty members?	54.44%	44.97%	0.42%	1%
10	How effective was the usage of ICT tools and black board for teaching?	56.03%	43.42%	0.54%	0%
11	How well the syllabus enabled you to improve your ability to formulate, analyze and solve the problems?	54.09%	45.62%	0.23%	0%



PRINCIPAL
KAILASH WOMEN'S COLLEGE
Tharamangalam-Nangavalli Main Road
Periyasoragai P.O, Nangavalli
SALEM-636 502

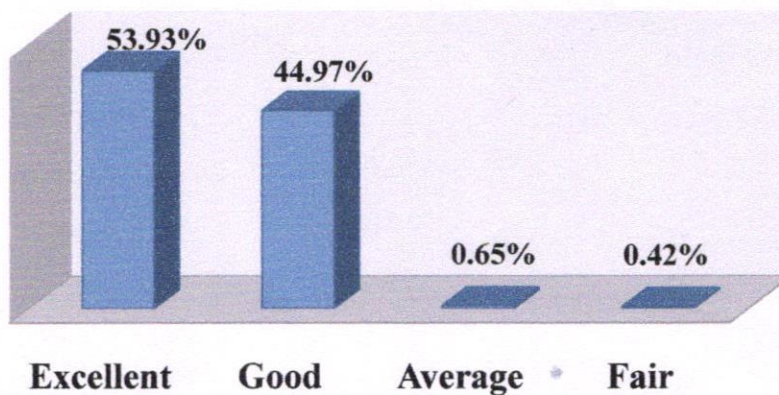


KAILASH WOMEN'S COLLEGE

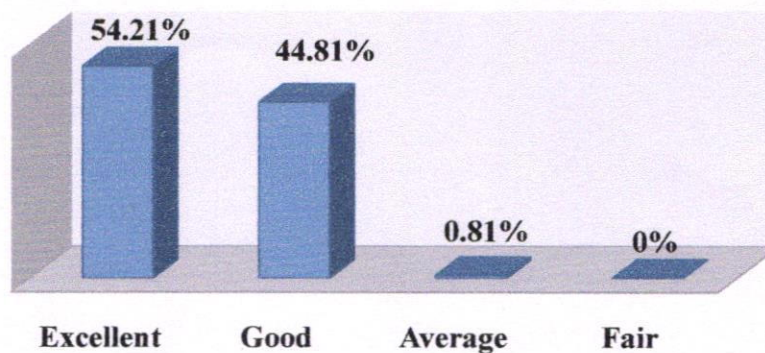
(Affiliated to Periyar University, Salem) (An ISO 9001:2015 Certified Institution) Nangavalli, Salem - 636502

The feedback taken from the students (using the above questions) syllabus completion, communication skills, teaching methodology and others reveal the following facts that are presented by a pictorial representation.

1. Did you find the syllabus easy to follow?



2. Was the entire syllabus covered in the class by teacher?



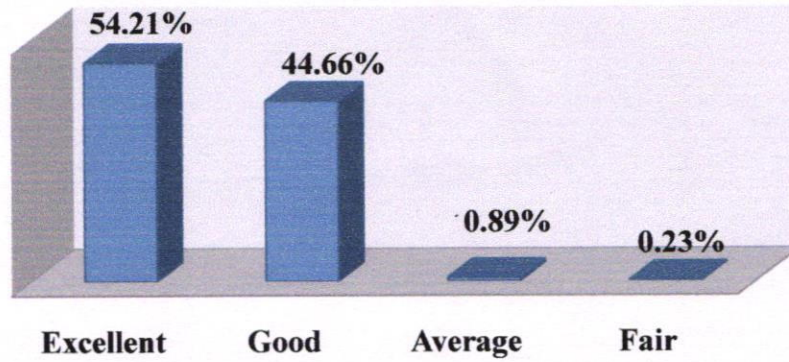

PRINCIPAL
KAILASH WOMEN'S COLLEGE
Tharamangalam-Nangavalli Main Road,
Periyasoragai P.O, Nangavalli
SALEM-636 502



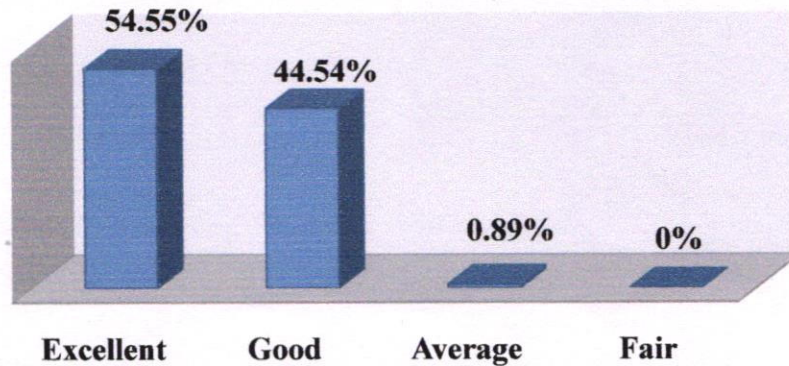
KAILASH WOMEN'S COLLEGE

(Affiliated to Periyar University, Salem) (An ISO 9001:2015 Certified Institution) Nangavalli, Salem - 636502

3. Were the units / sections in the syllabus properly sequenced?



4. How well did the syllabus equip you with necessary technical skills to face the industry?



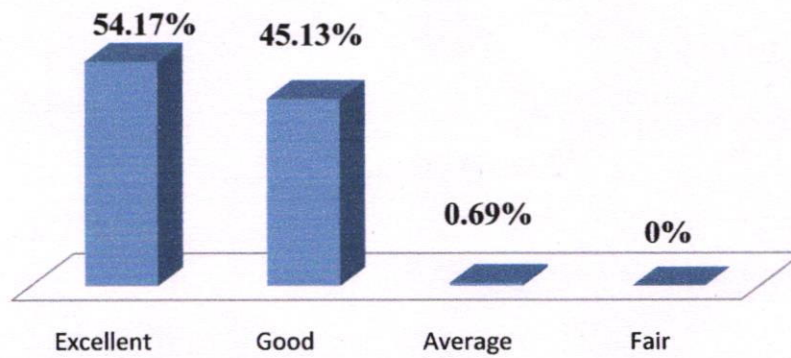

PRINCIPAL
KAILASH WOMEN'S COLLEGE
Tharamangalam-Nangavalli Main Road
Periyasoragai P.O., Nangavalli,
SALEM-636 502



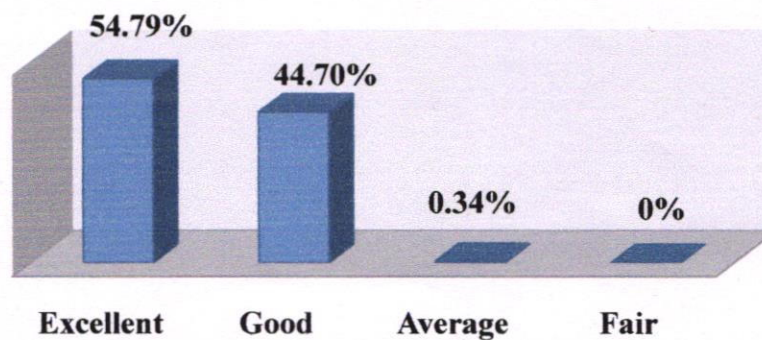
KAILASH WOMEN'S COLLEGE

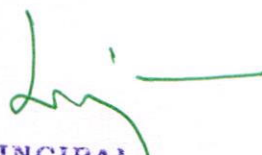
(Affiliated to Periyar University, Salem) (An ISO 9001:2015 Certified Institution) Nangavalli, Salem - 636502

5. How do you take the sequence of the units in the course?



6. Was the depth of the course content adequate in relation to the expected course outcomes?



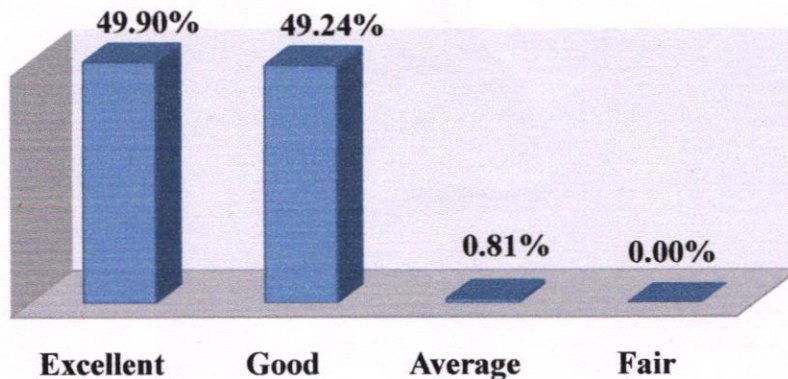

PRINCIPAL
KAILASH WOMEN'S COLLEGE
Tharamangalam-Nangavalli Main Road,
Periyasoragai P.O., Nangavalli,
SALEM-636 502



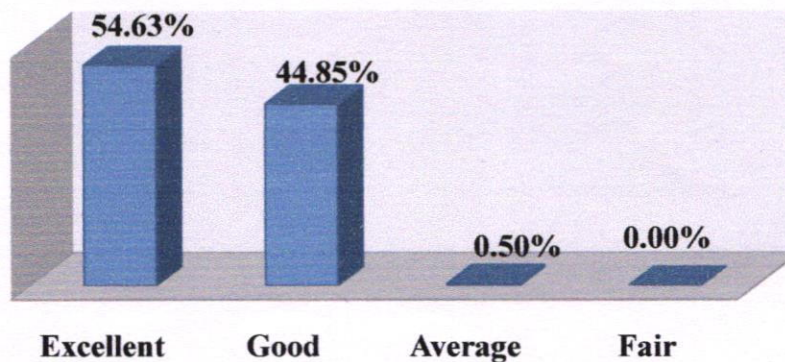
KAILASH WOMEN'S COLLEGE

(Affiliated to Periyar University, Salem) (An ISO 9001:2015 Certified Institution) Nangavalli, Salem - 636502

7. What do you say about the library for using text books?



8. What do you think about the lab facilities of the course that you are studying?



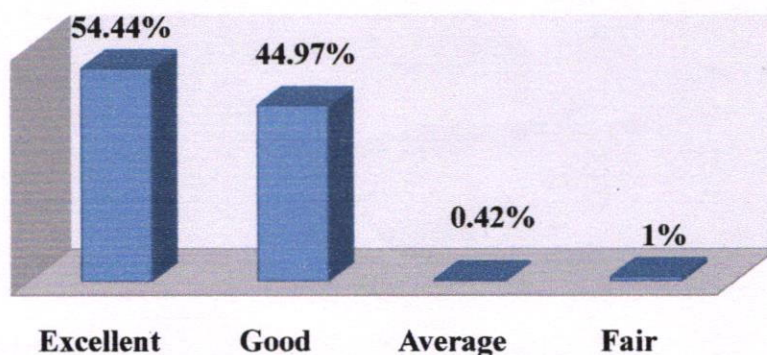
[Signature]
PRINCIPAL
KAILASH WOMEN'S COLLEGE
Tharamangalam-Nangavalli Main Road
Periyasoragai P.O, Nangavalli,
SALEM-636 502



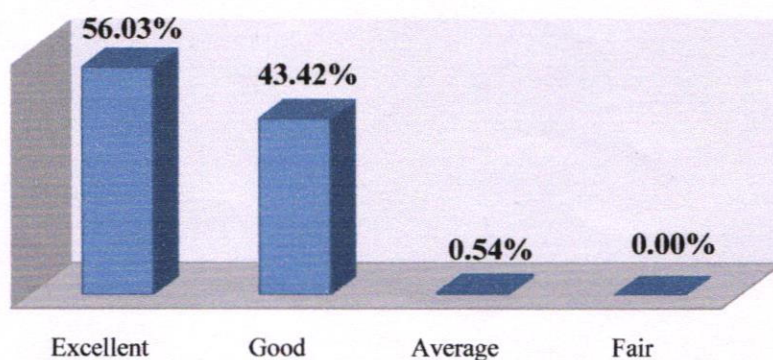
KAILASH WOMEN'S COLLEGE

(Affiliated to Periyar University, Salem) (An ISO 9001:2015 Certified Institution) Nangavalli, Salem - 636502

9. How helpful was the career guidance and counseling provided by faculty members?



10. How effective was the usage of ICT tools and black board for teaching?



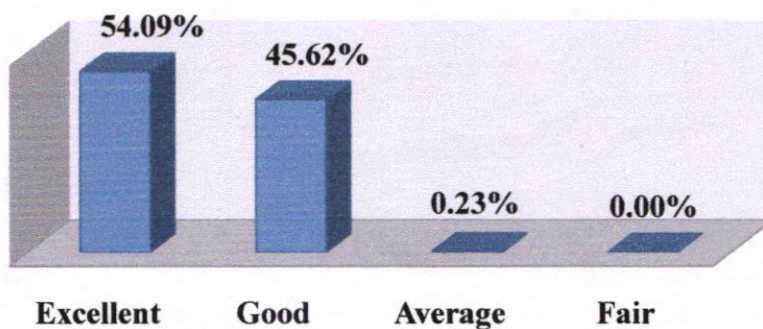

PRINCIPAL
KAILASH WOMEN'S COLLEGE
Tharamangalam-Nangavalli Main Road
Periyasoragai P.O, Nangavalli
SALEM-636 502




KAILASH WOMEN'S COLLEGE

(Affiliated to Periyar University, Salem) (An ISO 9001:2015 Certified Institution) Nangavalli, Salem - 636502

11. How well the syllabus enabled you to improve your ability to formulate, analyze and solve the problems?



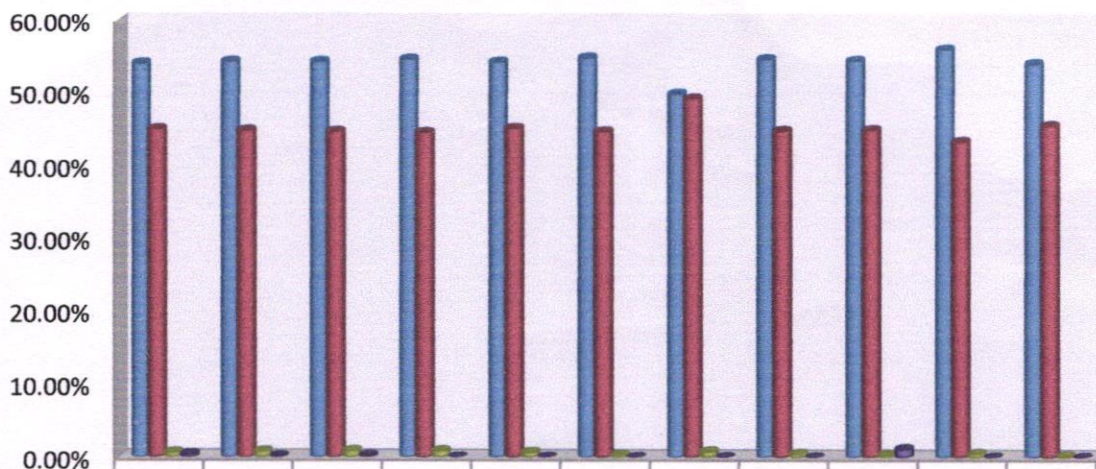

PRINCIPAL
KAILASH WOMEN'S COLLEGE
Tharamangalam-Nangavalli Main Road
Periyasoragai P.O, Nangavalli,
SALEM-636 502



KAILASH WOMEN'S COLLEGE

(Affiliated to Periyar University, Salem) (An ISO 9001:2015 Certified Institution) Nangavalli, Salem - 636502

Student Feedback Analysis (2021-22)



Did you find the syllabus easy to follow?	Was the entire syllabus covered in the class by teacher?	Were the units/ sections in the syllabus properly sequenced?	How well did the syllabus equip you with necessary technical skills to face the industry?	How do you take the sequence of the units in the course?	Was the depth of the course content adequate in relation to the expected course outcomes?	What do you say about the library for using text books?	What do you think about the facilities of the course that you are studying?	How helpful was the career guidance and counseling provided by faculty members?	How effective was the usage of ICT tools and black board for teaching?	How well the syllabus enabled you to improve your ability to formulate, analyze and solve the prob...
1	2	3	4	5	6	7	8	9	10	11

■ Excellent	53.93%	54.21%	54.21%	54.55%	54.17%	54.79%	49.90%	54.63%	54.44%	56.03%	54.09%
■ Good	44.97%	44.81%	44.66%	44.54%	45.13%	44.70%	49.24%	44.85%	44.97%	43.42%	45.62%
■ Average	0.65%	0.81%	0.89%	0.89%	0.69%	0.34%	0.81%	0.50%	0.42%	0.54%	0.23%
■ Fair	0.42%	0%	0.23%	0%	0%	0%	0.00%	0.00%	1%	0.00%	0.00%



[Handwritten Signature]

PRINCIPAL

KAILASH WOMEN'S COLLEGE

Tharamangalam-Nangavalli Main Road

Periyasoragai P.O, Nangavalli,

SALEM-636 502



KAILASH WOMEN'S COLLEGE

(Affiliated to Periyar University, Salem) (An ISO 9001:2015 Certified Institution) Nangavalli, Salem - 636502

1.4.1 Institution obtains feedback on the syllabus and its transaction at the institution

INTERNAL QUALITY ASSURANCE CELL FEEDBACK ANALYSIS (2021-22)

Our college regularly collects feedback from the students which comprises of syllabus completion, communication skills, teaching methodology and others in various aspects. Feedback is received from students, teachers, employers and alumni during various meetings held in each academic session. Feedback forms are available in our college website so that the students can voice out whenever an issue is raised.

FEEDBACK ANALYSIS – TEACHERS

IQAC collected feedback from teachers regarding college infrastructure learning and different other aspects. The representations of feedback analysis are as follows.

Summary table for teachers feedback (2021-22)					
Sl. No.	Particulars	Excellent	Good	Average	Fair
1	Teacher Student rapport	55.22%	38.80%	4.40%	1.49%
2	Inclusion/Incorporation of latest advancement in the subject.	58.20%	38.05%	2.23%	1.49%
3	Weightage given to practical and field work component.	55.97%	36.56%	4.47%	2.98%
4	Depth of the course content and outcomes.	57.46%	39.55%	1.49%	1.49%
5	Student academic response.	55.22%	37.31%	4.47%	2.98%
6	Availability of library & e-resources.	58.20%	40.29%	1.49%	0%
7	Motivating and assisting students for research projects.	58.95%	39.55%	0.74%	0.74%
8	Motivation and Financial assistance to publish research papers or attend conference.	56.71%	38.80%	2.98%	1.49%
9	Weightage given to employability.	53.73%	40.29%	4.47%	1.49%
10	Rate the job satisfaction.	57.46%	38.05%	2.98%	1.49%



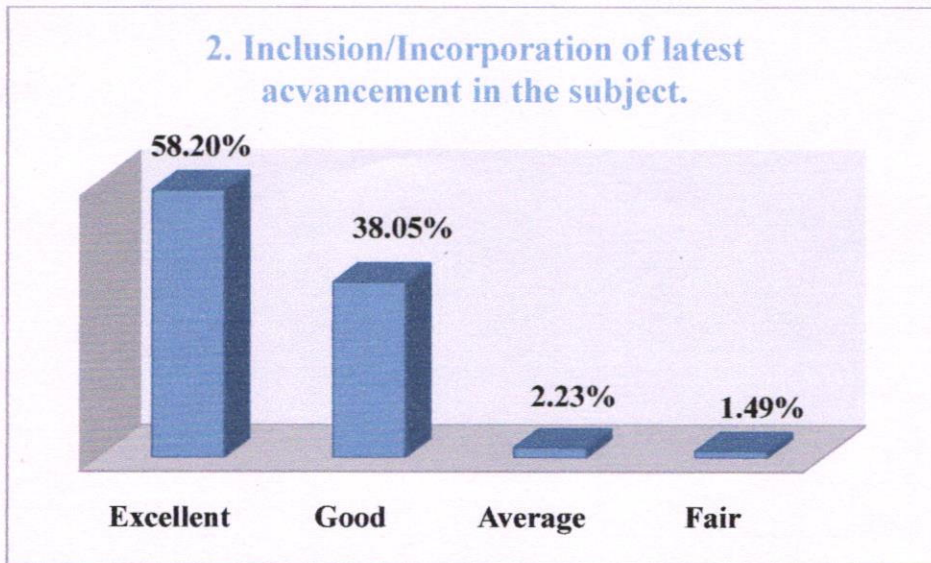
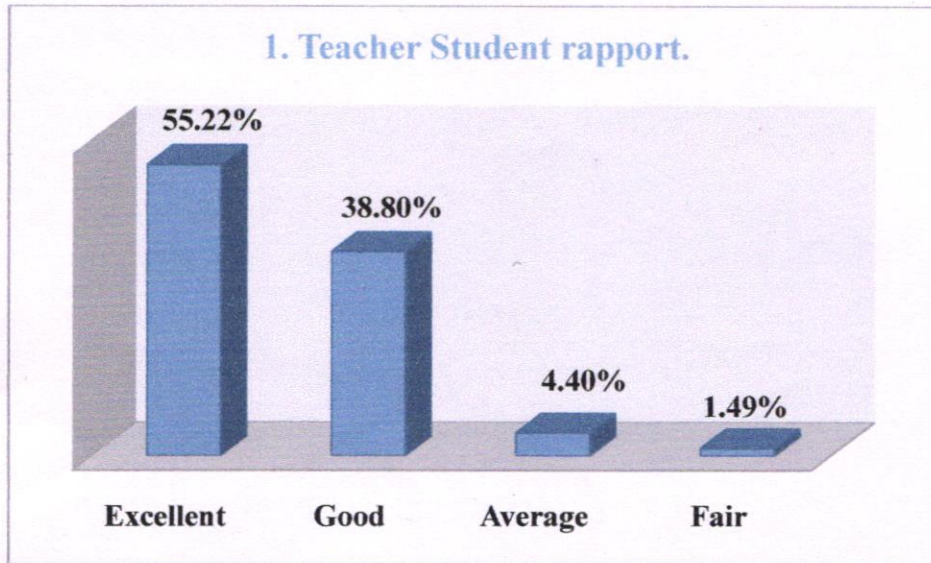
PRINCIPAL
KAILASH WOMEN'S COLLEGE
Tharamangalam-Nangavalli Main Road
Periyasoragai P.O, Nangavalli
SALEM-636 502



KAILASH WOMEN'S COLLEGE

(Affiliated to Periyar University, Salem) (An ISO 9001:2015 Certified Institution) Nangavalli, Salem - 636502

The feedback taken from teachers (using the above questions) about the present curriculum is reveals the following facts that should be in a pictorial representations.



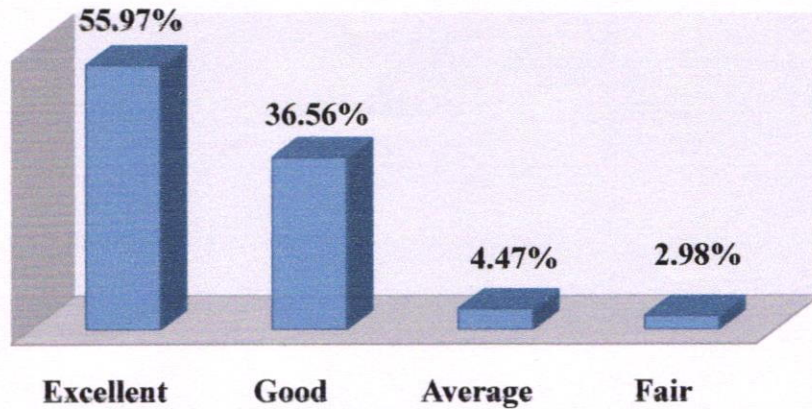
[Handwritten Signature]
KAILASH WOMEN'S COLLEGE
Tharamangalam-Nangavalli Main Road
Periyasoragai P.O., Nangavalli,
SALEM-636 502



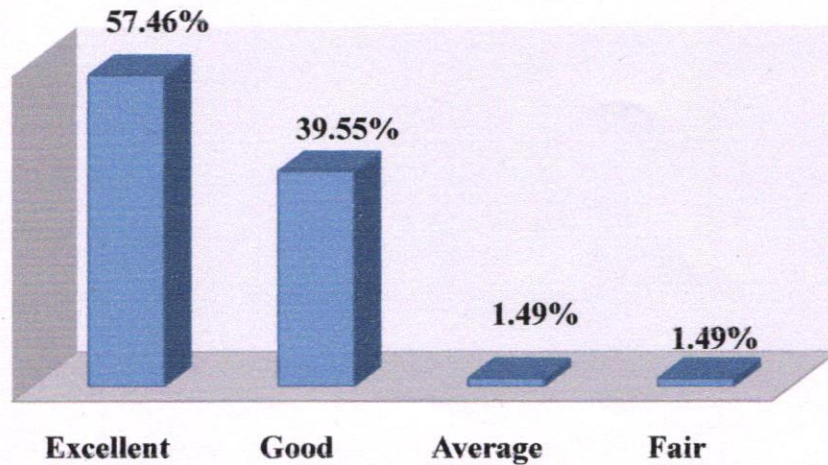
KAILASH WOMEN'S COLLEGE

(Affiliated to Periyar University, Salem) (An ISO 9001:2015 Certified Institution) Nangavalli, Salem - 636502

3. Weightage given to practical and field work component.



4. Depth of the course content and outcomes.



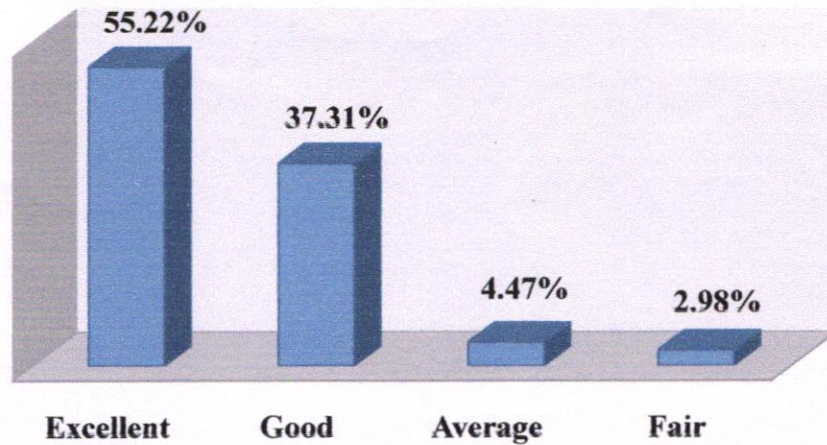

PRINCIPAL
KAILASH WOMEN'S COLLEGE
Tharamangalam-Nangavalli Main Road
Periyasoragai P.O. Nangavalli,
SALEM-636 502



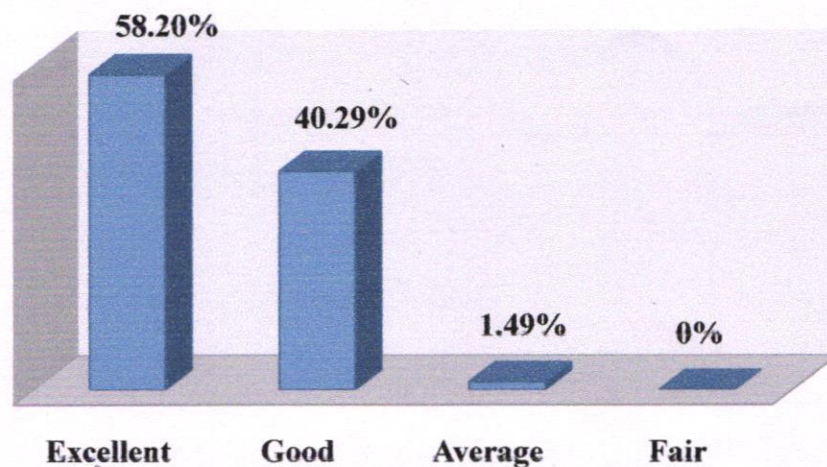
KAILASH WOMEN'S COLLEGE

(Affiliated to Periyar University, Salem) (An ISO 9001:2015 Certified Institution) Nangavalli, Salem - 636502

5. Students academic response.



6. Availability of library & e-resources.



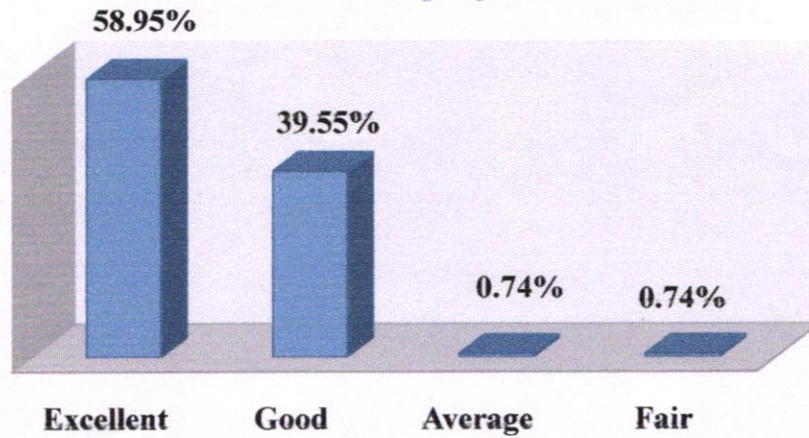
PRINCIPAL
KAILASH WOMEN'S COLLEGE
Tharamangalam-Nangavalli Main Road
Periyasoragai P.O, Nangavalli,
SALEM-636 502



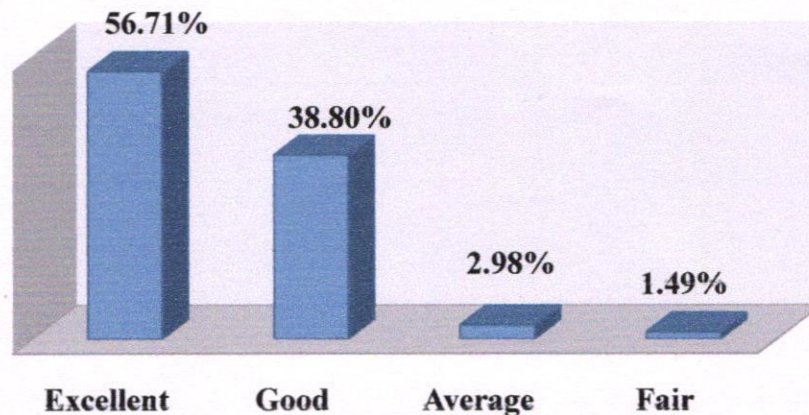
KAILASH WOMEN'S COLLEGE

(Affiliated to Periyar University, Salem) (An ISO 9001:2015 Certified Institution) Nangavalli, Salem - 636502

7. Motivating and assisting students for research projects.



8. Motivation and Financial assistance to publish research papers or attend conference.



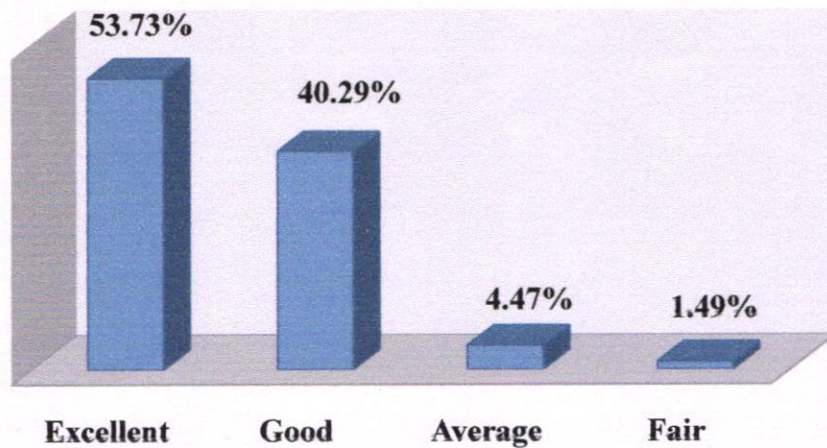
PRINCIPAL
KAILASH WOMEN'S COLLEGE
Tharamangalam-Nangavalli Main Road
Periyasoragai P.O. Nangavalli,
SALEM-636 502



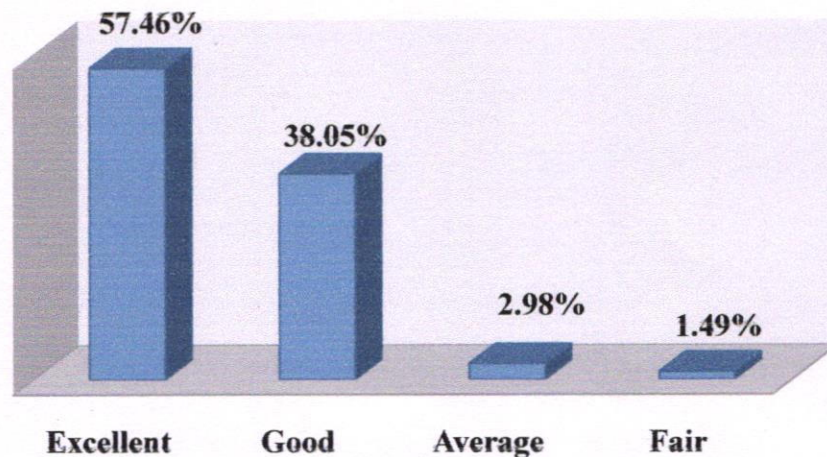
KAILASH WOMEN'S COLLEGE

(Affiliated to Periyar University, Salem) (An ISO 9001:2015 Certified Institution) Nangavalli, Salem - 636502

9. Weightage given to employability.



10. Rate the job satisfaction.



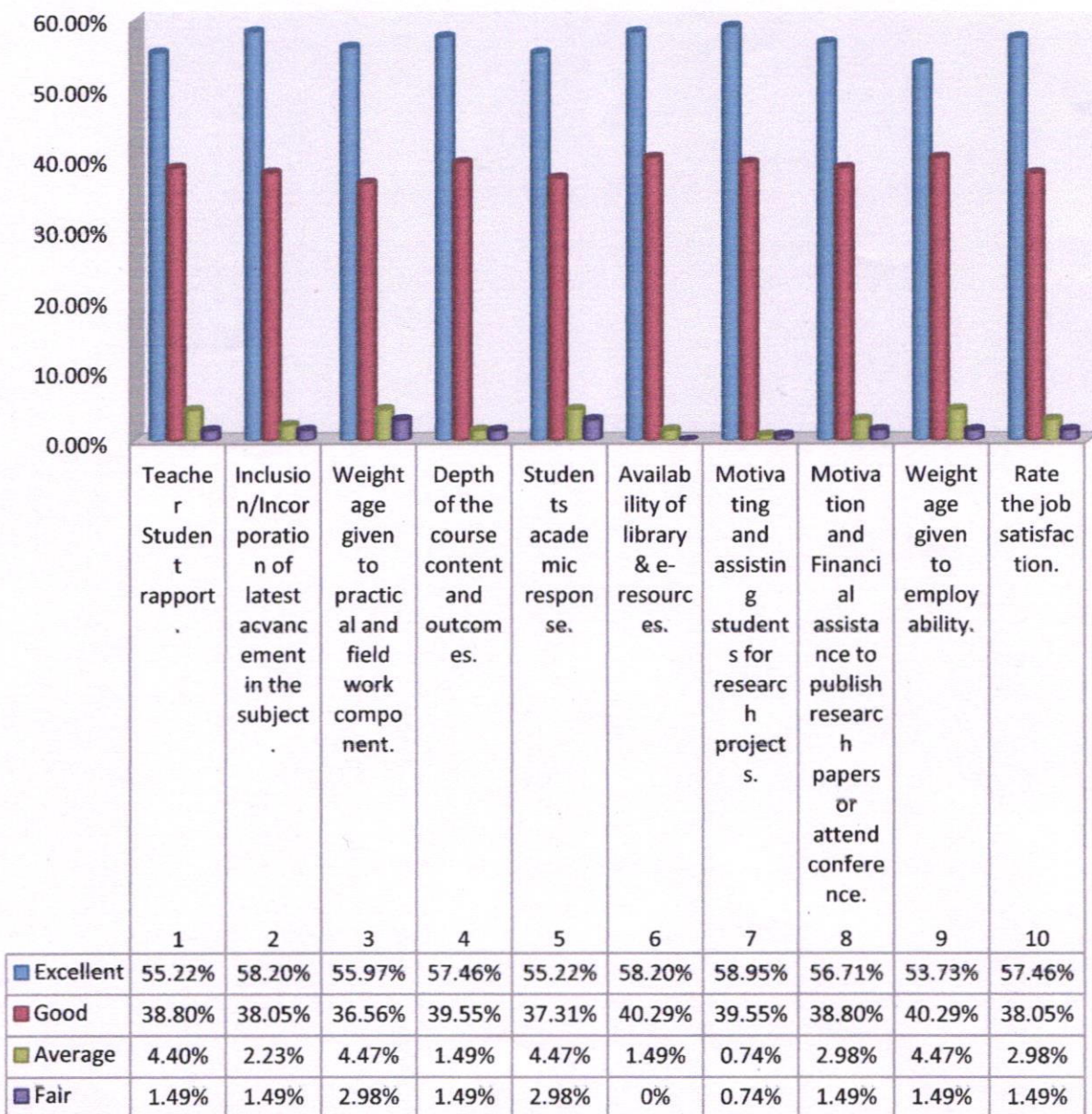
PRINCIPAL
KAILASH WOMEN'S COLLEGE
Tharamangalam-Nangavalli Main Road
Periyasoragai P.O, Nangavalli,
SALEM-636 502



KAILASH WOMEN'S COLLEGE

(Affiliated to Periyar University, Salem) (An ISO 9001:2015 Certified Institution) Nangavalli, Salem - 636502

Teachers Feedback Analysis (2021-22)



[Handwritten Signature]

PRINCIPAL
KAILASH WOMEN'S COLLEGE
 Tharamangalam-Nangavalli Main Road
 Periyasoragai P.O, Nangavalli,
 SALEM-636 502



KAILASH WOMEN'S COLLEGE

(Affiliated to Periyar University, Salem) (An ISO 9001:2015 Certified Institution) Nangavalli, Salem - 636502

1.4.1 Institution obtains feedback on the syllabus and its transaction at the institution

INTERNAL QUALITY ASSURANCE CELL FEEDBACK ANALYSIS (2021-22)

Our college regularly collects feedback from the students which comprises of syllabus completion, communication skills, teaching methodology and others in various aspects. Feedback is received from students, teachers, employers and alumni during various meetings held in each academic session. Feedback forms are available in our college website so that the students can voice out whenever an issue is raised.

FEEDBACK ANALYSIS – EMPLOYERS

IQAC collected feedback from the Employer on skill training. The representations of feedback analysis are as follows.

Summary table for employer feedback (2021-22)

Sl. No.	Particulars	Excellent	Good	Average	Fair
1	Syllabus is suitable for employability.	54.16%	43.33%	2.50%	0.00%
2	Syllabus is need based and as per current trends in market.	50.00%	47.50%	4.33%	0.00%
3	Syllabus matches with the demands of the job market.	58.33%	49.16%	3.50%	0.00%
4	Syllabus takes care of knowledge and skills of the students.	45.83%	39.00%	6.66%	8.33%
5	Syllabus is good in balance between theory and application.	54.16%	44.33%	2.50%	4.16%
6	Ethical and professional skills development through curricular.	58.33%	39.16%	3.50%	0.00%
7	Syllabus bridges the gap between industry and academics.	62.50%	43.33%	4.16%	0.00%
8	Fulfills the communication skills required by industry.	58.33%	45.00%	2.50%	2.16%
9	Aptitude and problem analysis skills.	55.66%	39.16%	4.16%	0.00%
10	Scope for integration/training research.	66.66%	35.00%	4.33%	0.00%



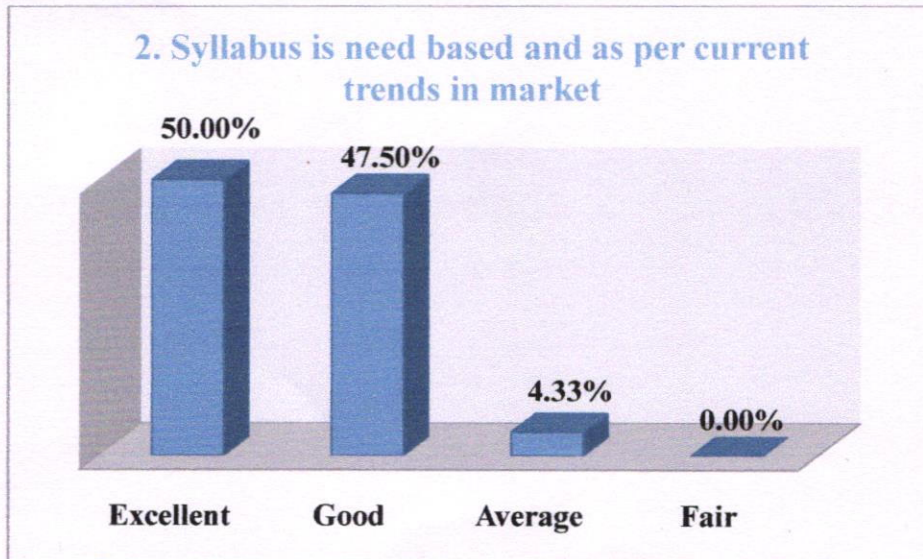
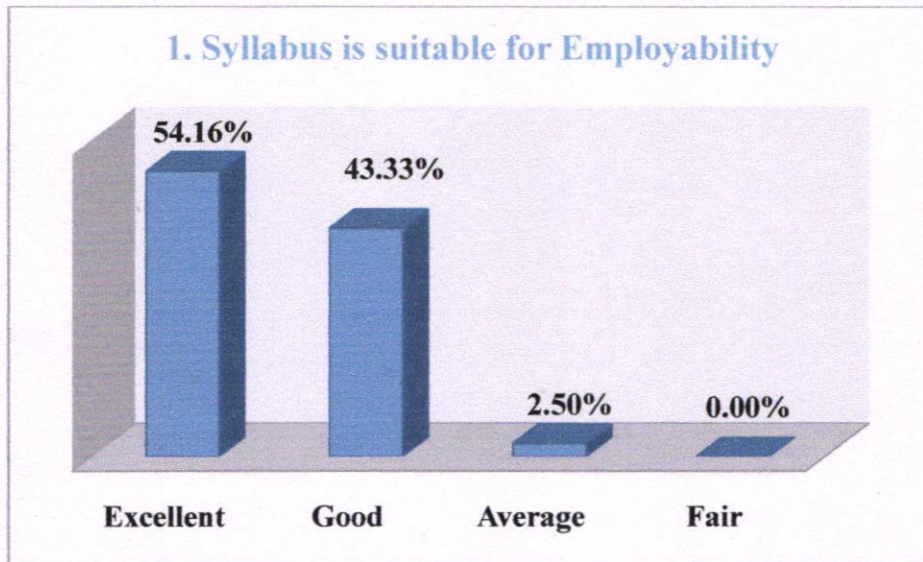

PRINCIPAL
KAILASH WOMEN'S COLLEGE
 Tharamangalam-Nangavalli Main Road
 Periyasoragai P.O, Nangavalli
 SALEM-636 502



KAILASH WOMEN'S COLLEGE

(Affiliated to Periyar University, Salem) (An ISO 9001:2015 Certified Institution) Nangavalli, Salem - 636502

The feedback taken from employers (using the above questions) about the present curriculum is reveals the following facts that should be in a pictorial representations.



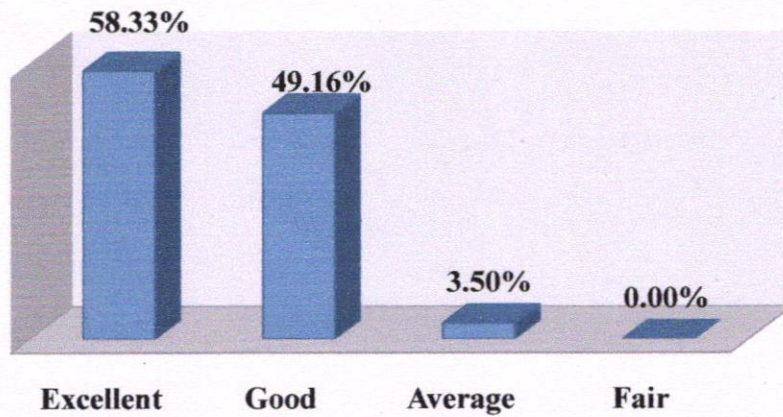

PRINCIPAL
KAILASH WOMEN'S COLLEGE
Tharamangalam-Nangavalli Main Road
Periyasoragai P.O., Nangavalli
SALEM-636 502



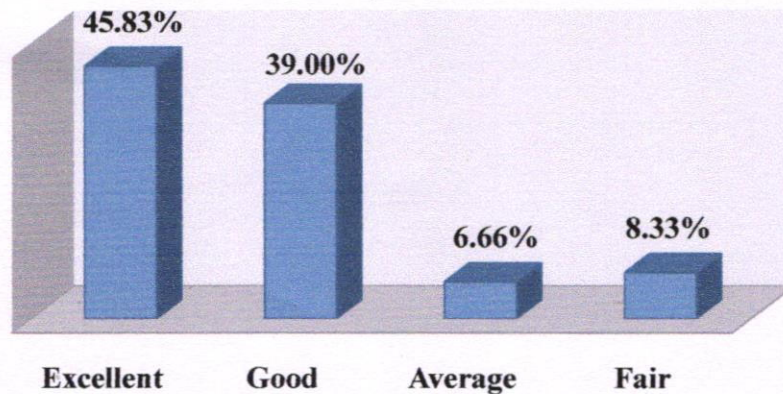
KAILASH WOMEN'S COLLEGE


(Affiliated to Periyar University, Salem) (An ISO 9001:2015 Certified Institution) Nangavalli, Salem - 636502

3. Syllabus matches with the demands of the job market



4. Syllabus takes care of knowledge and skills of the students



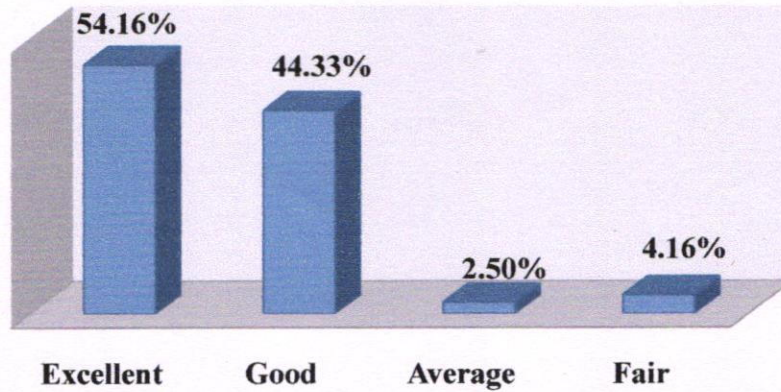

PRINCIPAL
KAILASH WOMEN'S COLLEGE
Tharamangalam-Nangavalli Main Road
Periyasoragai P.O, Nangavalli
SALEM-636 502



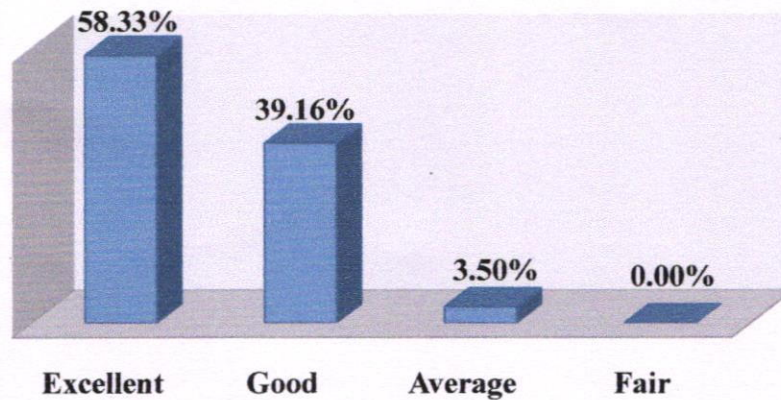
KAILASH WOMEN'S COLLEGE

(Affiliated to Periyar University, Salem) (An ISO 9001:2015 Certified Institution) Nangavalli, Salem - 636502

5. Syllabus is good in balance between theory and application.



6. Ethical and professional skills Development through curricular



[Signature]
PRINCIPAL

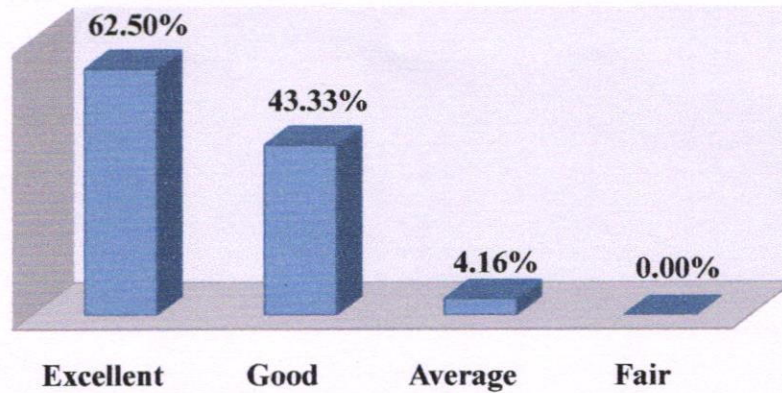
KAILASH WOMEN'S COLLEGE
Tharamangalam-Nangavalli Main Road
Periyasoragai P.O, Nangavalli
SALEM-636 502



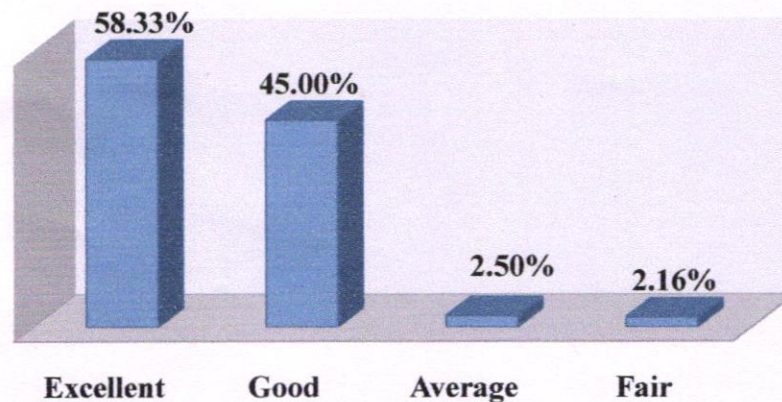
KAILASH WOMEN'S COLLEGE


(Affiliated to Periyar University, Salem) (An ISO 9001:2015 Certified Institution) Nangavalli, Salem - 636502

7. Syllabus bridges the gap between industry and Academics



8. Fulfills of Communication Skills required by industry



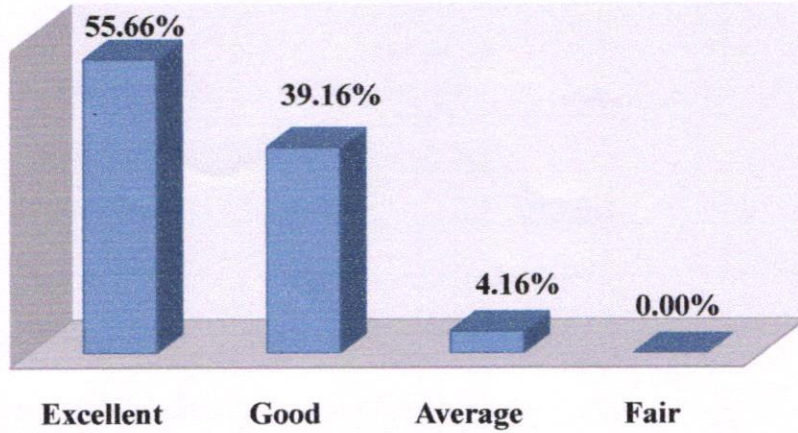

PRINCIPAL
KAILASH WOMEN'S COLLEGE
Tharamangalam-Nangavalli Main Road
Periyasoragai P.O., Nangavalli
SALEM-636 502



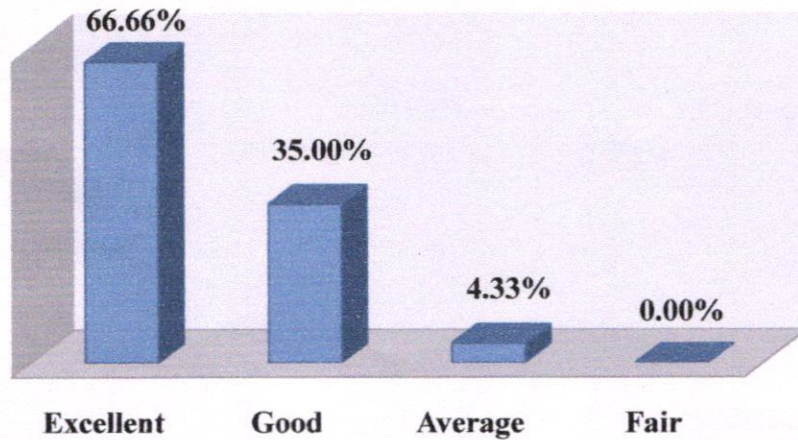
KAILASH WOMEN'S COLLEGE

(Affiliated to Periyar University, Salem) (An ISO 9001:2015 Certified Institution) Nangavalli, Salem - 636502

9. Aptitude and problem Analysis Skills



10. Scope for Integration/ training research



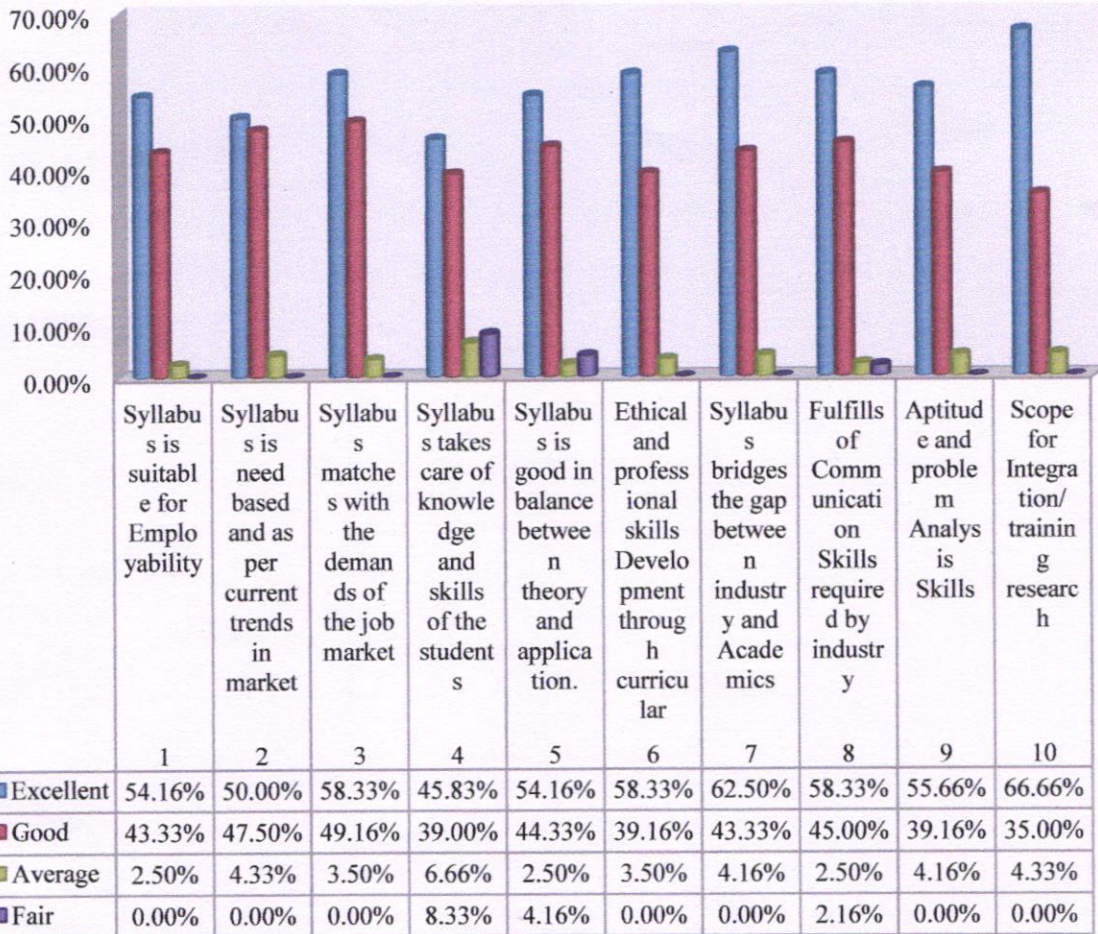
PRINCIPAL
KAILASH WOMEN'S COLLEGE
Tharamangalam-Nangavalli Main Road
Periyasoragai P.O, Nangavalli
SALEM-636 502




KAILASH WOMEN'S COLLEGE

(Affiliated to Periyar University, Salem) (An ISO 9001:2015 Certified Institution) Nangavalli, Salem - 636502

Employers Feedback Analysis (2021-22)




PRINCIPAL
KAILASH WOMEN'S COLLEGE
 Tharamangalam-Nangavalli Main Road
 Periyasoragai P.O. Nangavalli
SALEM-636 502



KAILASH WOMEN'S COLLEGE

(Affiliated to Periyar University, Salem) (An ISO 9001:2015 Certified Institution) Nangavalli, Salem - 636502

1.4.1 Institution obtains feedback on the syllabus and its transaction at the institution

INTERNAL QUALITY ASSURANCE CELL FEEDBACK ANALYSIS (2021-22)

Our college regularly collects feedback from the students which comprises of syllabus completion, communication skills, teaching methodology and others in various aspects. Feedback is received from students, teachers, employers and alumni during various meetings held in each academic session. Feedback forms are available in our college website so that the students can voice out whenever an issue is raised.

FEEDBACK ANALYSIS – ALUMNI

Feedback was collected IQAC from Alumni regarding the teachers college infrastructure, and different other aspects. The representations of feedback analysis report are as follows.

Summary table for alumni feedback (2021-22)					
Sl. No.	Particulars	Excellent	Good	Average	Fair
1	How do you feel being an alumni KWC	55.09%	36.51%	5.09%	3.28%
2	Relevant of course content	55.42%	35.03%	6.25%	3.28%
3	Syllabus matches with the demands of the job market.	55.26%	37.33%	4.73%	2.46%
4	Overall academic atmosphere in the syllabus	54.93%	37.99%	5.59%	1.48%
5	Faculty motivation during course study	54.60%	39.14%	4.60%	1.64%
6	Library facility	68%	32.23%	0%	0%
7	Training and placement	54.60%	36.67%	6.25%	2.46%
8	Availability of library & e-resources	56.08%	37.50%	4.60%	1.80%
9	Campus environment	56.57%	38.65%	13.12%	1.64%
10	Canteen facility	56.74%	36.84%	3.94%	2.46%
11	Transport facility	55.26%	36.01%	6.25%	2.46%
12	Ability of curriculum of foster entrepreneurship	54.90%	36.67%	4.60%	1.80%



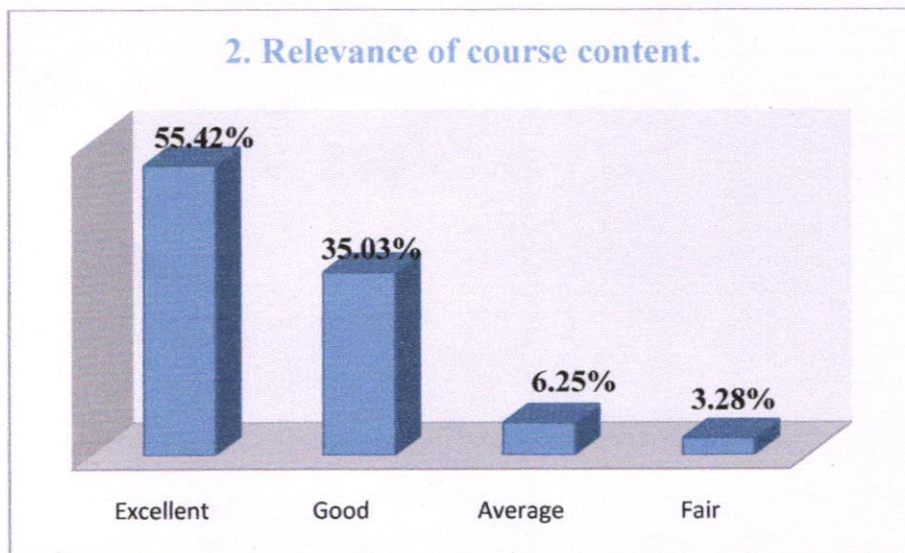
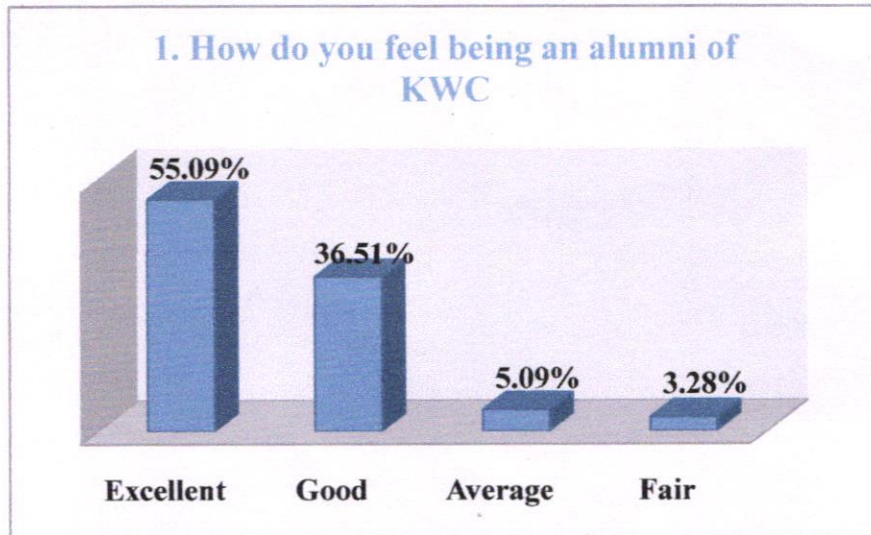
PRINCIPAL
KAILASH WOMEN'S COLLEGE
 Tharamangalam-Nangavalli Main Road
 Periyasoragai P.O, Nangavalli
 SALEM-636 502



KAILASH WOMEN'S COLLEGE

(Affiliated to Periyar University, Salem) (An ISO 9001:2015 Certified Institution) Nangavalli, Salem - 636502

The feedback taken from alumni (using the above questions) about the present curriculum is reveals the following facts that should be in a pictorial representations.



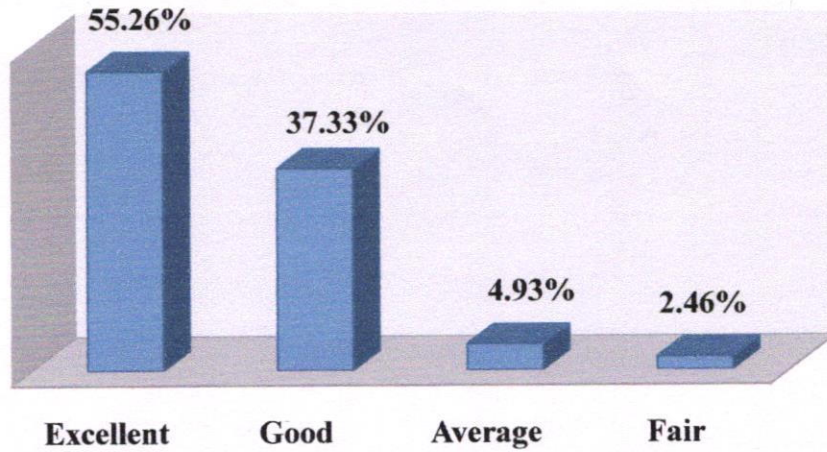

PRINCIPAL
KAILASH WOMEN'S COLLEGE
Tharamangalam-Nangavalli Main Road
Periyasoragai P.O, Nangavalli
SALEM-636 502



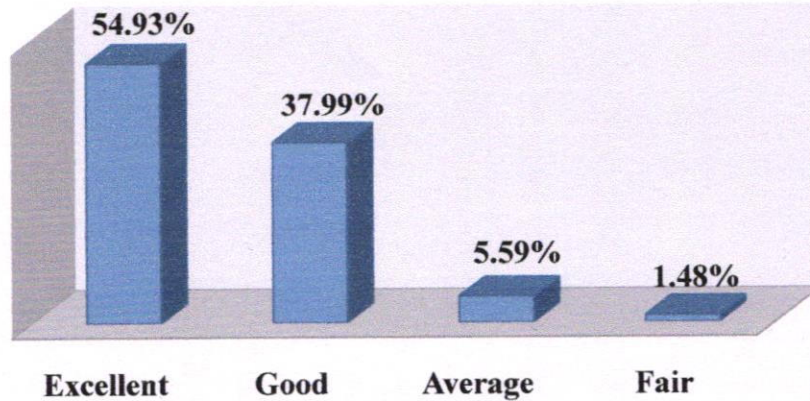
KAILASH WOMEN'S COLLEGE

(Affiliated to Periyar University, Salem) (An ISO 9001:2015 Certified Institution) Nangavalli, Salem - 636502

3. Career orientation in the syllabus



4. Overall academic atmosphere in the syllabus.



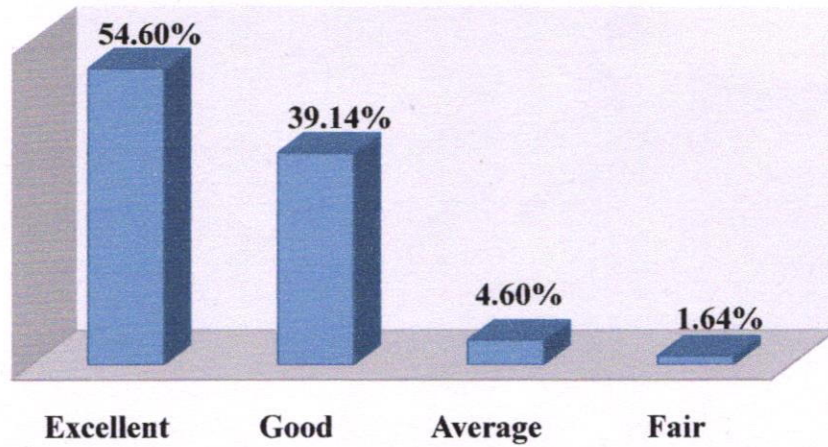
[Signature]
PRINCIPAL
KAILASH WOMEN'S COLLEGE
Tharamangalam-Nangavalli Main Road
Periyasoragai P.O., Nangavalli,
SALEM-636 502



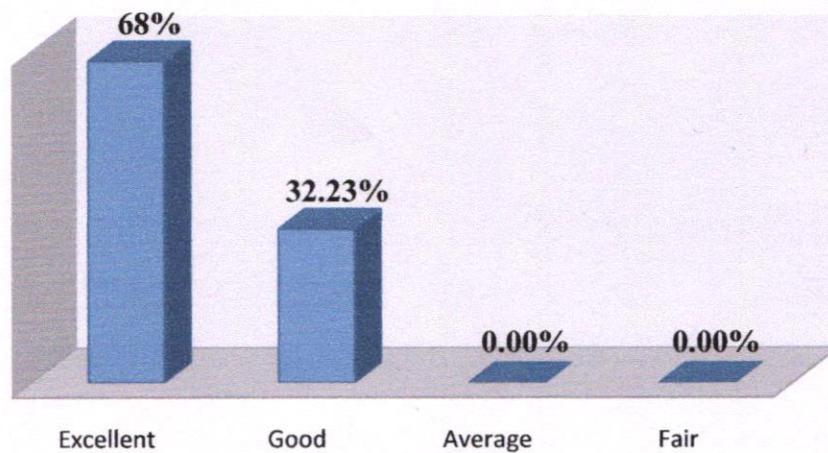
KAILASH WOMEN'S COLLEGE

(Affiliated to Periyar University, Salem) (An ISO 9001:2015 Certified Institution) Nangavalli, Salem - 636502

5. Faculty motivation during course study



6. Library facility



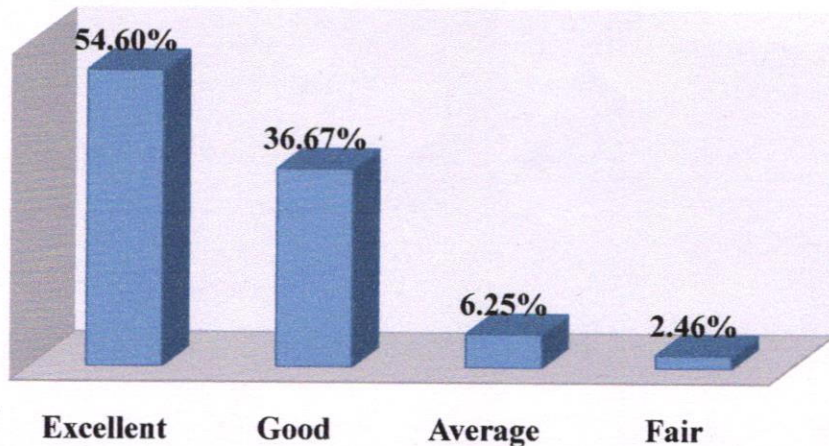

PRINCIPAL
KAILASH WOMEN'S COLLEGE
Tharamangalam-Nangavalli Main Road
Periyasoragai P.O., Nangavalli,
SALEM-636 502



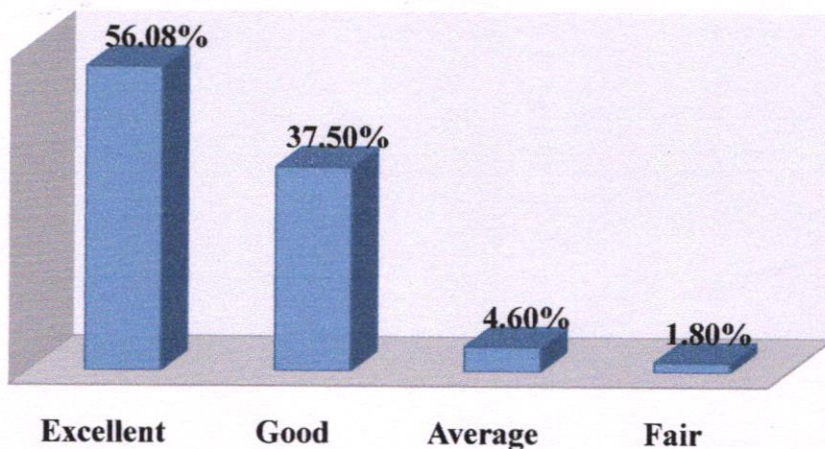
KAILASH WOMEN'S COLLEGE

(Affiliated to Periyar University, Salem) (An ISO 9001:2015 Certified Institution) Nangavalli, Salem - 636502

7. Training and Placement



8. Availability of library & e-resources



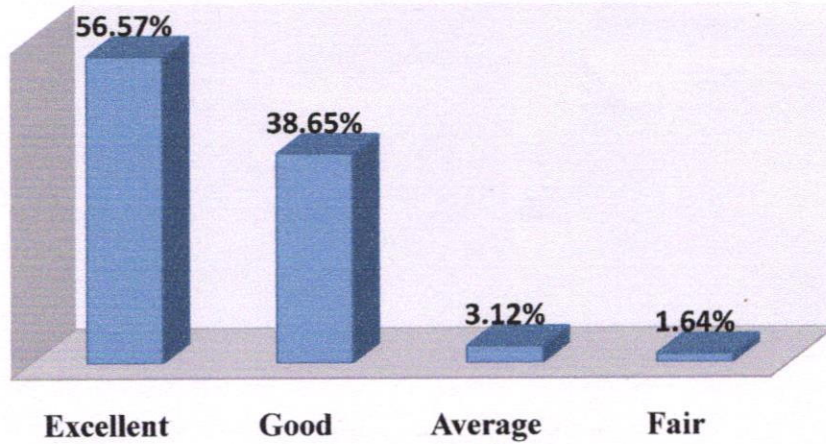
[Signature]
PRINCIPAL
KAILASH WOMEN'S COLLEGE
Tharamangalam-Nangavalli Main Road
Periyasoragai P.O, Nangavalli,
SALEM-636 502



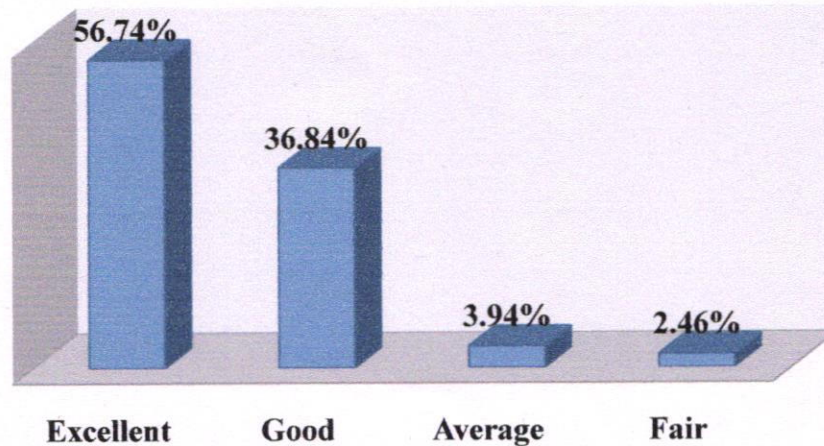
KAILASH WOMEN'S COLLEGE


(Affiliated to Periyar University, Salem) (An ISO 9001:2015 Certified Institution) Nangavalli, Salem - 636502

9. Campus environment



10. Canteen facility.



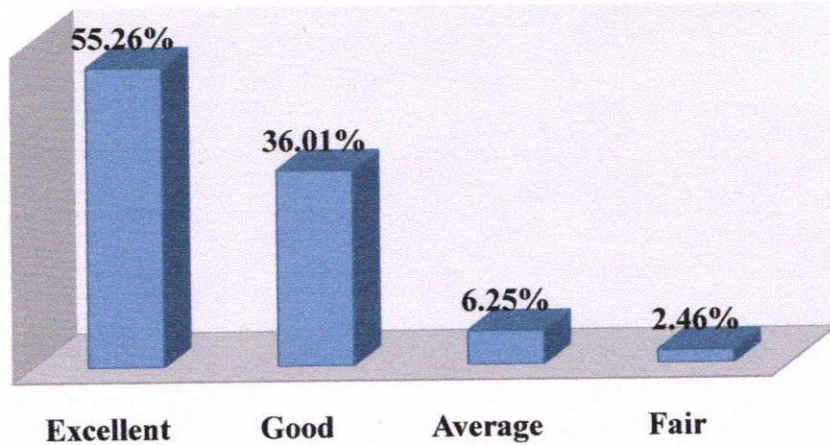

PRINCIPAL
KAILASH WOMEN'S COLLEGE
Tharamangalam-Nangavalli Main Road
Periyasoragai P.O, Nangavalli,
SALEM-636 502



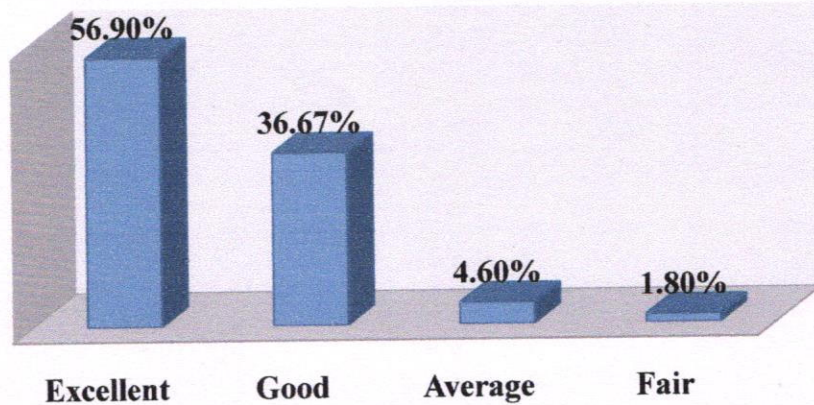
KAILASH WOMEN'S COLLEGE

(Affiliated to Periyar University, Salem) (An ISO 9001:2015 Certified Institution) Nangavalli, Salem - 636502

11. Transport facility.



12. Ability of curriculum to foster Entrepreneurship



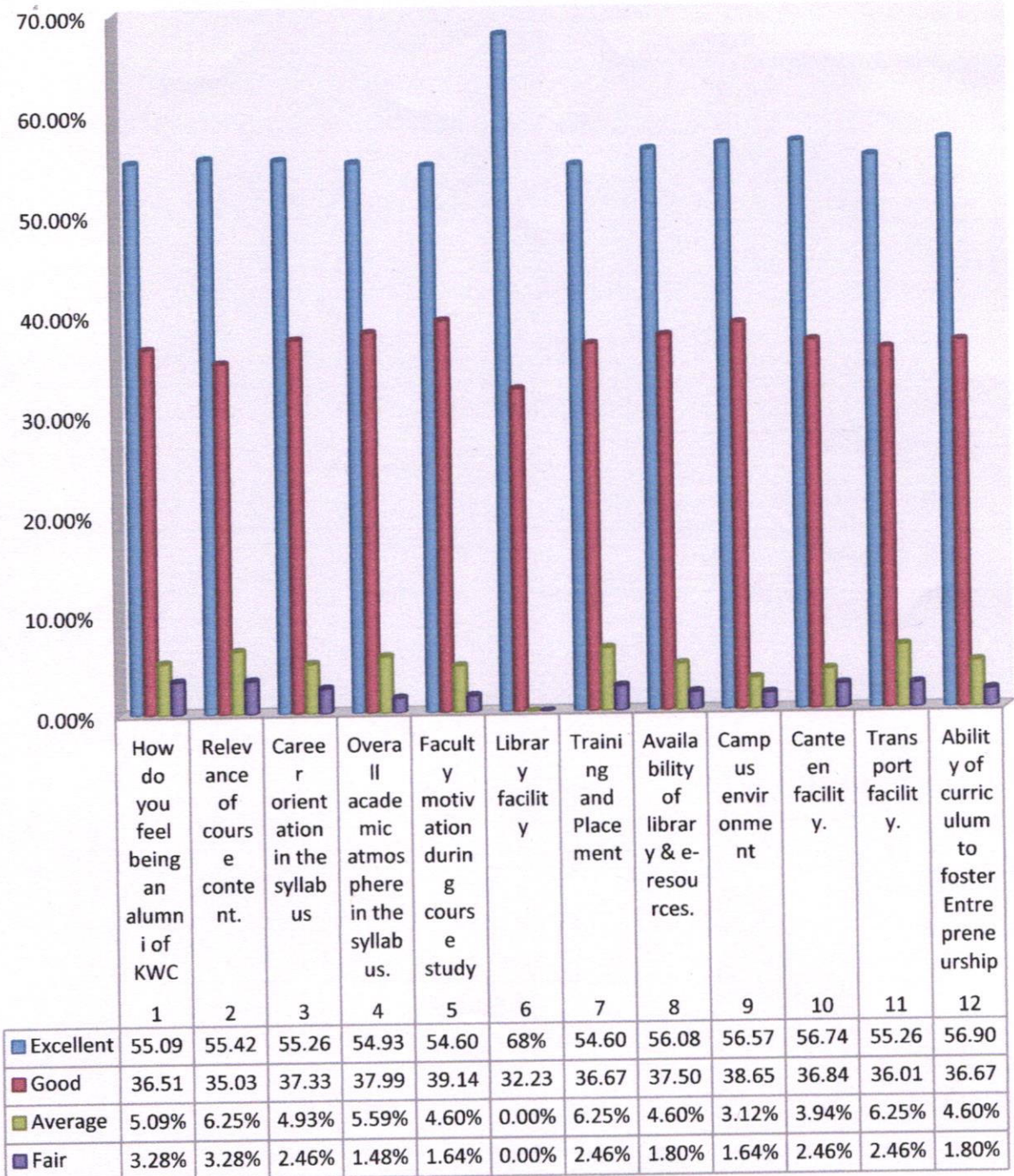

PRINCIPAL
KAILASH WOMEN'S COLLEGE
Tharamangalam-Nangavalli Main Road
Periyasoragai P.O, Nangavalli,
SALEM-636 502



KAILASH WOMEN'S COLLEGE

(Affiliated to Periyar University, Salem) (An ISO 9001:2015 Certified Institution) Nangavalli, Salem - 636502

Alumni Feedback Analysis (2021-22)




PRINCIPAL
KAILASH WOMEN'S COLLEGE
 Tharamangalam-Nangavalli Main Road
 Periyasoragai P.O, Nangavalli,
SALEM-636 502



KAILASH WOMEN'S COLLEGE

(Affiliated to Periyar University, Salem) (An ISO 9001:2015 Certified Institution) Nangavalli, Salem - 636502

1.4.1 Institution obtains feedback on the syllabus and its transaction at the institution

INTERNAL QUALITY ASSURANCE CELL FEEDBACK ANALYSIS (2021 -22)

Our college regularly collects feedback from the students which comprises of syllabus completion, communication skills, teaching methodology and others in various aspects. Feedback is received from students, teachers, employer, alumni and parents during various meetings held in each academic session. Feedback forms are available in our college website so that the students can voice out whenever an issue is raised.

FEEDBACK ANALYSIS – PARENTS

Feedback collected from parents has been submitted to IQAC on various aspects related to academics, teaching-learning, fees structure and extracurricular for the academic year. The representations of feedback analysis are as follows.

Summary table for Parents feedback (2021-22)

Sl. No.	Particulars	Excellent	Good	Average	Fair
1	Quality of teaching.	48.67%	34%	24.%	0%
2	Fees Structure.	43.33%	35.33%	26.67%	0.67%
3	Course Availability.	78.67%	13.33%	12%	2%
4	Curricular and co-curricular Activities conducted by the college.	61.33%	23.33%	20.67%	0.67%
5	How do you rate the value and relevance of the course for career?	42%	34%	25.33%	4.67%
6	How do you rate the environment/ discipline of the college?	51.33%	26%	22.67%	0.67%
7	Are the authorities easily approachable regarding any queries?	81.33%	11.33%	12%	1.33%
8	Are you satisfied with information given about your daughter?	56.67%	26.%	22.67%	0.67%
9	Teaching Methods followed by the Department	51.33%	32%	21.33%	1.33%



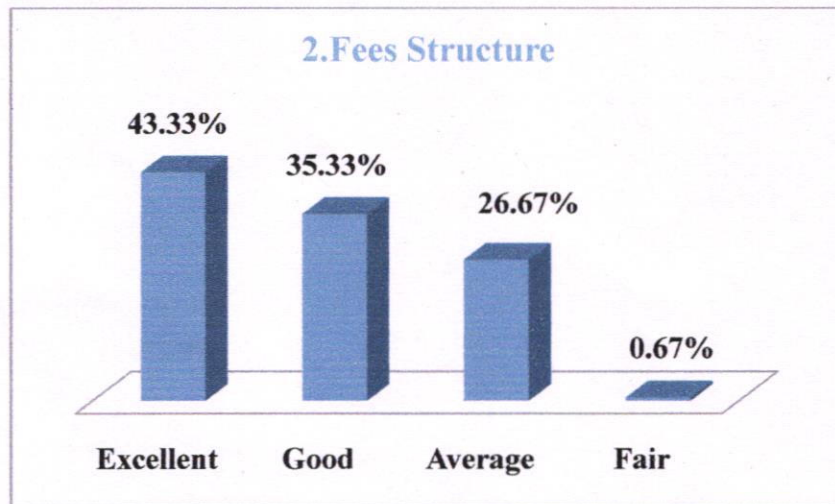
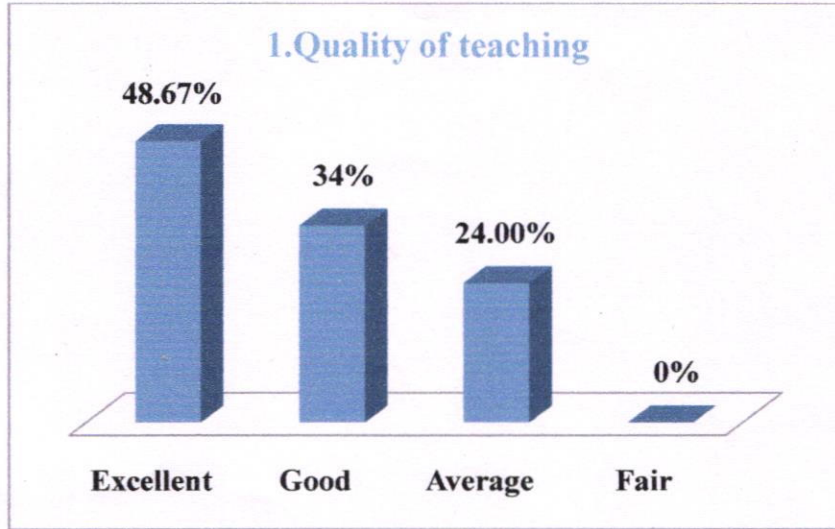
[Signature]
PRINCIPAL
KAILASH WOMEN'S COLLEGE
 Tharamangalam-Nangavalli Main Road
 Periyasoragai P.O, Nangavalli
 SALEM-636 502



KAILASH WOMEN'S COLLEGE

(Affiliated to Periyar University, Salem) (An ISO 9001:2015 Certified Institution) Nangavalli, Salem - 636502

The feedback taken from parents (using the above questions) about the present curriculum is reveals the following facts that are in a pictorial representations.

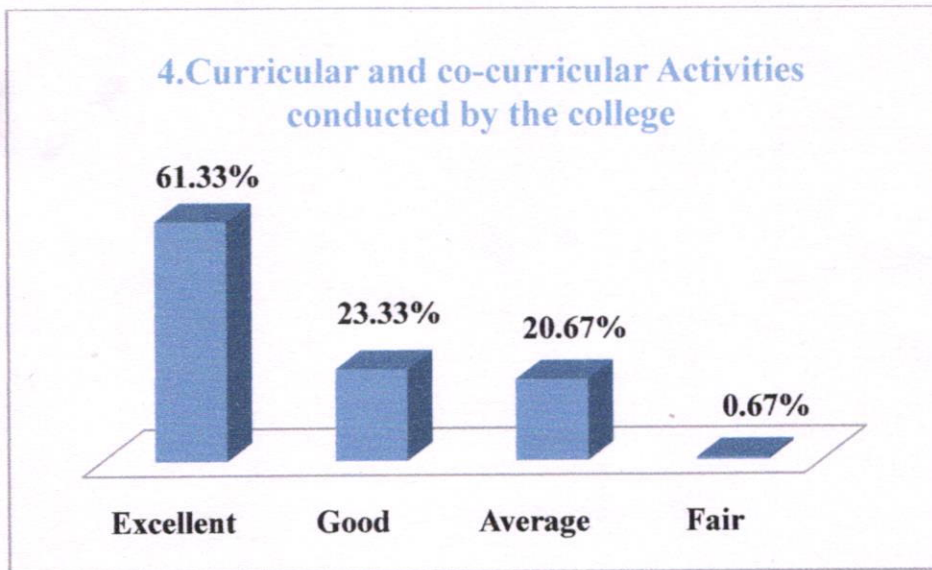
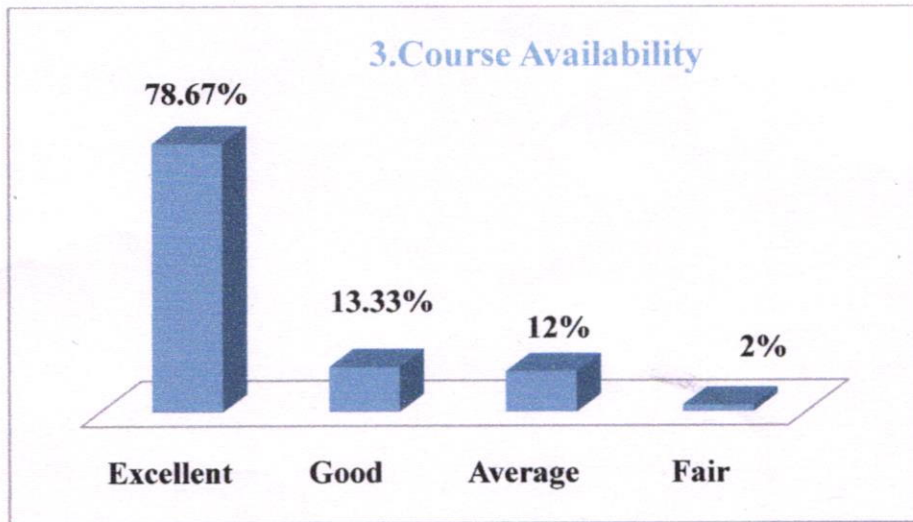



PRINCIPAL
KAILASH WOMEN'S COLLEGE
Tharamangalam-Nangavalli Main Road
Periyasoragai P.O. Nangavalli
SALEM-636 502



KAILASH WOMEN'S COLLEGE

(Affiliated to Periyar University, Salem) (An ISO 9001:2015 Certified Institution) Nangavalli, Salem - 636502



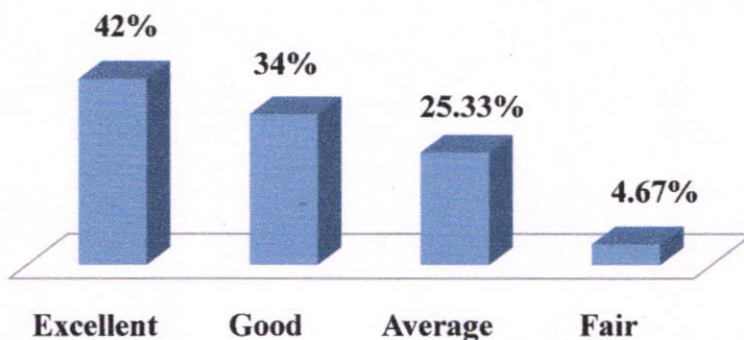
PRINCIPAL
KAILASH WOMEN'S COLLEGE
Tharamangalam-Nangavalli Main Road,
Periyasoragai P.O, Nangavalli,
SALEM-636 502



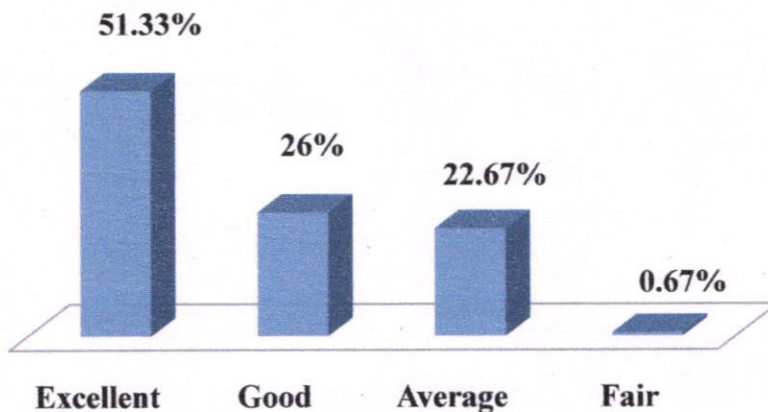
KAILASH WOMEN'S COLLEGE

(Affiliated to Periyar University, Salem) (An ISO 9001:2015 Certified Institution) Nangavalli, Salem - 636502

5. How do you rate the value and relevance of the course for career?



6. How do you rate the environment/ discipline of the college?



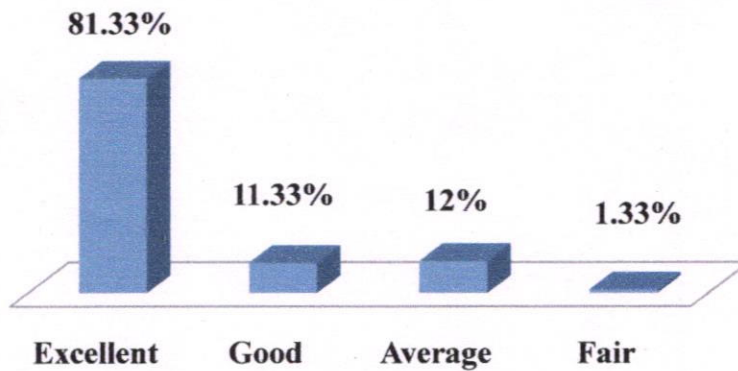

PRINCIPAL
KAILASH WOMEN'S COLLEGE
Tharamangalam-Nangavalli Main Road
Periyasoragai P.O, Nangavalli.
SALEM-636 502



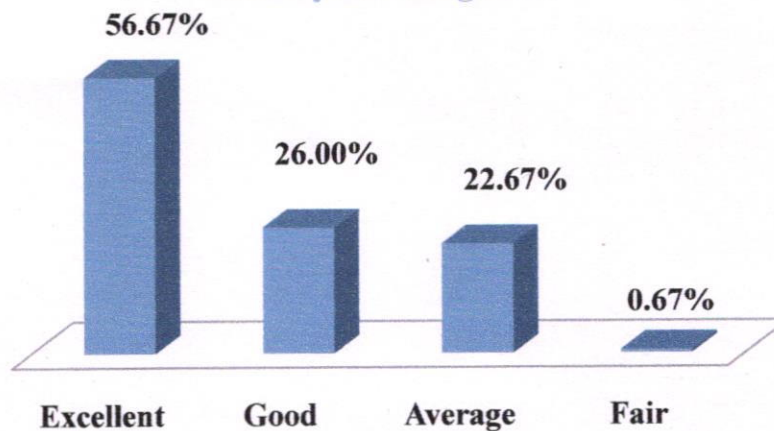
KAILASH WOMEN'S COLLEGE

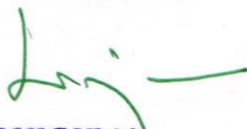
(Affiliated to Periyar University, Salem) (An ISO 9001:2015 Certified Institution) Nangavalli, Salem - 636502

7. Are the authorities easily approachable regarding any queries?



8. Are you satisfied with information given about your daughter?

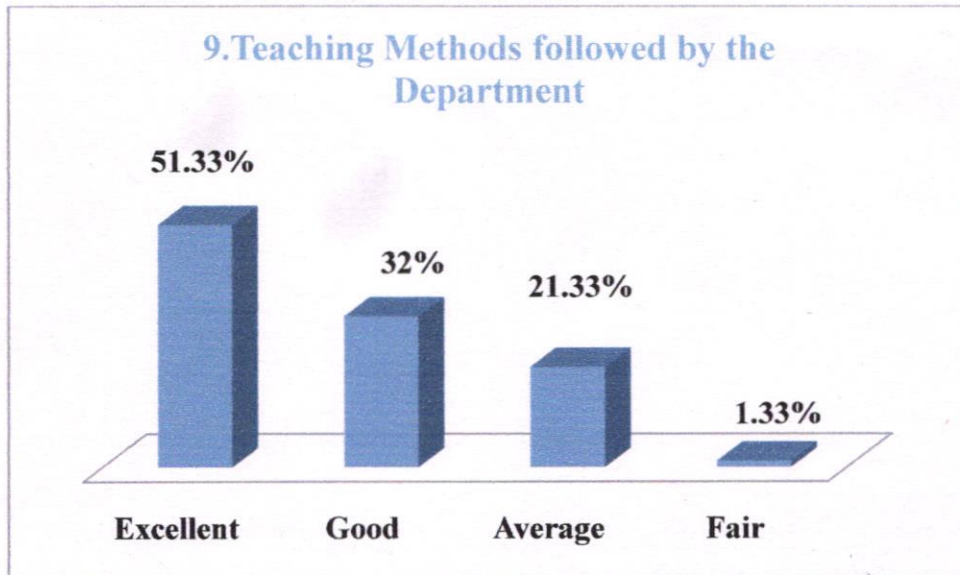



PRINCIPAL
KAILASH WOMEN'S COLLEGE
Tharamangalam-Nangavalli Main Road
Periyasoragai P.O, Nangavalli,
SALEM-636 502



KAILASH WOMEN'S COLLEGE

(Affiliated to Periyar University, Salem) (An ISO 9001:2015 Certified Institution) Nangavalli, Salem - 636502



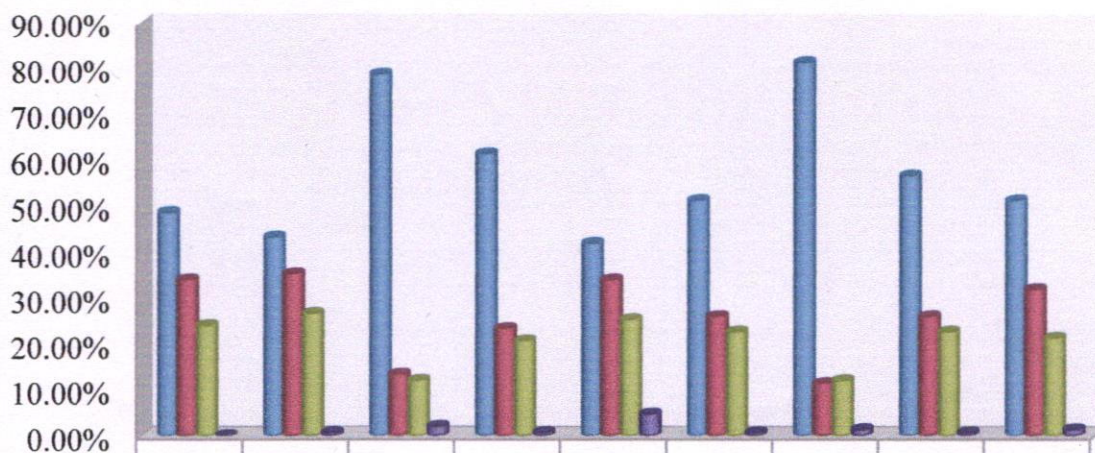
PRINCIPAL
KAILASH WOMEN'S COLLEGE
Tharamangalam-Nangavalli Main Road
Periyasoragai P.O, Nangavatti.
SALEM-636 502



KAILASH WOMEN'S COLLEGE

(Affiliated to Periyar University, Salem) (An ISO 9001:2015 Certified Institution) Nangavalli, Salem - 636502

Parents Feedback Analysis (2021-22)



	1	2	3	4	5	6	7	8	9
■ Excellent	48.67%	43.33%	78.67%	61.33%	42%	51.33%	81.33%	56.67%	51.33%
■ Good	34%	35.33%	13.33%	23.33%	34%	26%	11.33%	26.00%	32%
■ Average	24.00%	26.67%	12%	20.67%	25.33%	22.67%	12%	22.67%	21.33%
■ Fair	0%	0.67%	2%	0.67%	4.67%	0.67%	1.33%	0.67%	1.33%




PRINCIPAL
KAILASH WOMEN'S COLLEGE
 Tharamangalam-Nangavalli Main Road
 Periyasoragai P.O, Nangavalli,
 SALEM-636 502



KAILASH WOMEN'S COLLEGE

(Affiliated to Periyar University, Salem) (An ISO 9001:2015 Certified Institution) Nangavalli, Salem - 636502

1.4.1 Institution obtains feedback on the syllabus and its transaction at the institution

INTERNAL QUALITY ASSURANCE CELL DEPARTMENT WISE FEEDBACK ANALYSIS (2021 -22)

Our college regularly collects feedback from the students which comprises of syllabus completion, communication skills, teaching methodology and others in various aspects. Feedback is received from students, teachers, employers and alumni during various meetings held in each academic session. Feedback forms are available in our college website so that the students can voice out whenever an issue is raised.

FEEDBACK ANALYSIS – STUDENTS BA ENGLISH

IQAC collected feedback from students regarding syllabus completion, communication skills, teaching methodology and others in various aspects. The representations of feedback analysis report are as follows.

Summary table for Students feedback

Sl. No.	Particulars	Excellent	Good	Average	Fair
1	Did you find the syllabus easy to follow?	51.42%	47.79%	0.71%	0.07%
2	Was the entire syllabus covered in the class by teacher?	50.60%	48.47%	0.81%	0.10%
3	Were the units / sections in the syllabus properly sequenced?	51.32%	47.76%	0.91%	0%
4	How well did the syllabus equip you with necessary technical skills to face the industry?	50.74%	48.37%	1.08%	0.14%
5	How do you take the sequence of the units in the course?	51.21%	47.93%	0.84%	0%
6	Was the depth of the course content adequate in relation to the expected course outcomes?	50.91%	48.00%	0.98%	0.10%
7	What do you say about the library for using text books?	51.11%	48.06%	0.81%	0%
8	What do you think about the lab facilities of the course that you are studying?	51.35%	47.76%	0.88%	0%
9	How helpful was the career guidance and counseling provided by faculty members?	52.20%	46.57%	1.21%	0%
10	How effective was the usage of ICT tools and black board for teaching?	50.47%	47.61%	1.08%	0%
11	How well the syllabus enabled you to improve your ability to formulate, analyze and solve the problems?	49.66%	48.61%	1.52%	0.20%



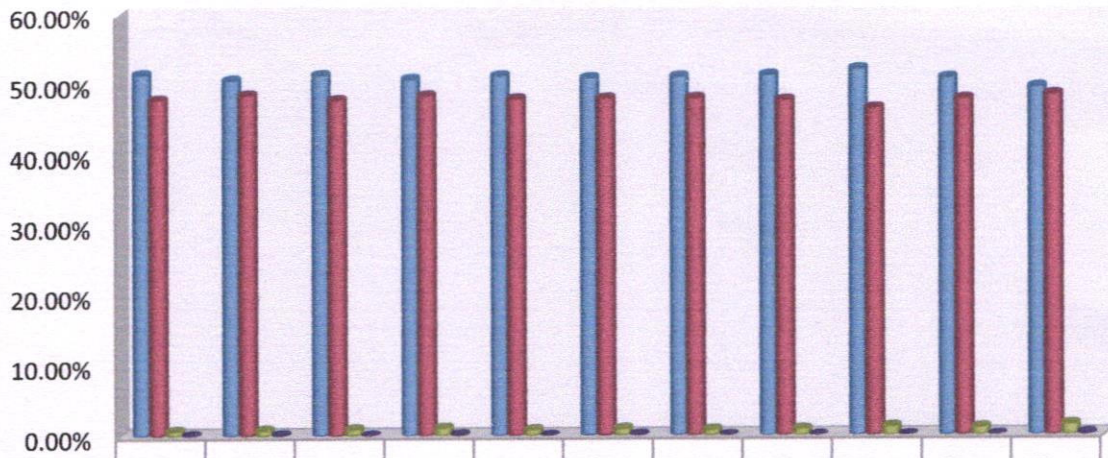

PRINCIPAL
KAILASH WOMEN'S COLLEGE
 Tharamangalam-Nangavalli Main Road
 Periyasoragai P.O, Nangavalli,
 SALEM-636 502



KAILASH WOMEN'S COLLEGE

(Affiliated to Periyar University, Salem) (An ISO 9001:2015 Certified Institution) Nangavalli, Salem - 636502

Students Feedback Analysis



	1	2	3	4	5	6	7	8	9	10	11
■ Excellent	51.42%	50.60%	51.32%	50.74%	51.21%	50.91%	51.11%	51.35%	52.20%	50.94%	49.66%
■ Good	47.79%	48.47%	47.76%	48.37%	47.93%	48.00%	48.06%	47.76%	46.57%	47.96%	48.61%
■ Average	0.71%	0.81%	0.91%	1.08%	0.84%	0.98%	0.81%	0.88%	1.21%	1.08%	1.52%
■ Fair	0.07%	0.10%	0%	0.14%	0%	0.10%	0%	0%	0%	0%	0.20%




PRINCIPAL
KAILASH WOMEN'S COLLEGE
 Tharamangalam-Nangavalli Main Road
 Periyasoragai P.O, Nangavalli,
 SALEM-636 502



KAILASH WOMEN'S COLLEGE

(Affiliated to Periyar University, Salem) (An ISO 9001:2015 Certified Institution) Nangavalli, Salem - 636502

FEEDBACK ANALYSIS – STUDENTS

B.A HISTORY

IQAC collected feedback from students regarding syllabus completion, communication skills, teaching methodology and others in various aspects. The representations of feedback analysis report are as follow.

Summary table for Students Feedback

Sl. No.	Particulars	Excellent	Good	Average	Fair
1	Did you find the syllabus easy to follow?	51.72%	45.07%	2.11%	1.08%
2	Entire the syllabus covered in the class by teacher?	51.47%	45.04%	2.29%	1.18%
3	Were the units/ sections in the syllabus properly sequenced?	51.84%	45.44%	1.92%	1%
4	How well did the syllabus equip you with necessary technical skills to face the industry?	51.94%	44.88%	1.95	1.21%
5	How do you take the sequence of the units in the course?	51.59%	44.92%	1.98	1%
6	Was the depth of the course content adequate in relation to the expected course outcomes?	51.87%	45.32%	2.05%	0.74%
7	What do you say about the library for using text books?	51.66%	45.32%	2.11%	1%
8	What do you think about the lab facilities of the course that you are studying?	52.09%	45.26%	2.11%	1%
9	How helpful was the career guidance and counseling provided by faculty members?	52.34%	45.60%	1.49%	1%
10	How effective was the usage of ICT tools and black board for teaching?	52.12%	45.16%	1.61%	2%
11	How well the syllabus enabled you to improve your ability to formulate, analyze and solve the problems?	52.03%	45.10%	1.70%	1.14%



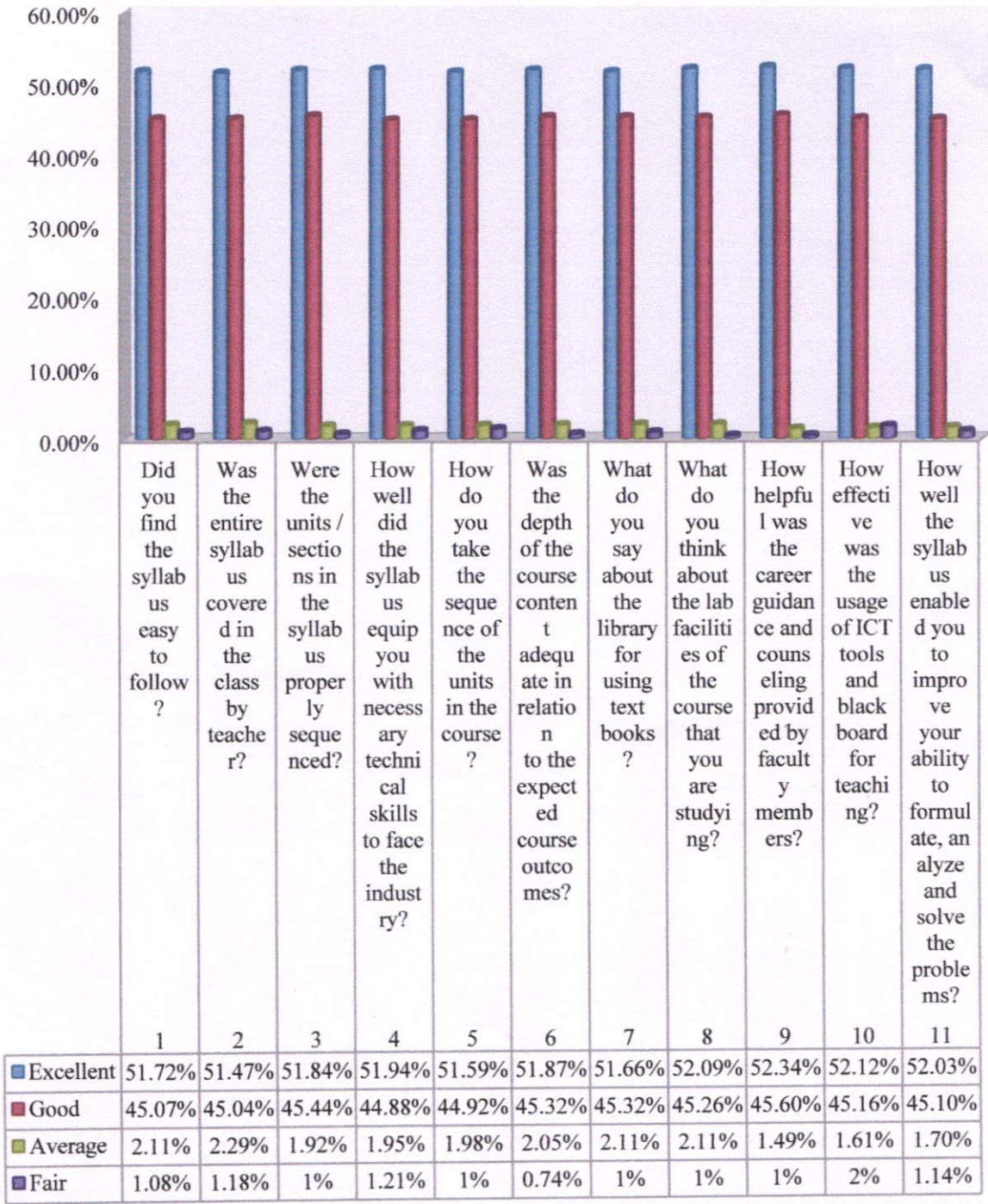

PRINCIPAL
KAILASH WOMEN'S COLLEGE
Tharamangalam-Nangavalli Main Road
Periyasoragai P.O, Nangavalli.
SALEM-636 502



KAILASH WOMEN'S COLLEGE

(Affiliated to Periyar University, Salem) (An ISO 9001:2015 Certified Institution) Nangavalli, Salem - 636502

Students Feedback Analysis



[Handwritten Signature]

PRINCIPAL
KAILASH WOMEN'S COLLEGE
 Tharamangalam-Nangavalli Main Road
 Periyasoragai P.O. Nangavalli,
 TAMIL NADU - 636 502



KAILASH WOMEN'S COLLEGE

(Affiliated to Periyar University, Salem) (An ISO 9001:2015 Certified Institution) Nangavalli, Salem - 636502

FEEDBACK ANALYSIS – STUDENTS

B.A TAMIL

IQAC collected feedback from students regarding syllabus completion, communication skills, teaching methodology and others in various aspects. The representations of feedback analysis report are as follow.

Summary table for Students Feedback

Sl.No	Particulars	Excellent	Good	Average	Fair
1	Did you find the syllabus easy to follow?	54.53%	44.70%	0.65%	0.12%
2	Was the entire syllabus covered in the class by teacher?	55.08%	44.15%	0.75%	0%
3	Were the units / sections in the syllabus properly sequenced?	54.22%	44.57%	0.85%	0.07%
4	How well did the syllabus equip you with necessary technical skills to face the industry?	54.43%	45.36%	0.21%	0%
5	How do you take the sequence of the units in the course?	54.67%	45.08%	0.24%	0%
6	Was the depth of the course content adequate in relation to the expected course outcomes?	54.43%	46.28%	0.27%	0%
7	What do you say about the library for using text books?	54.39%	45.36%	0.14%	0.10%
8	What do you think about the lab facilities of the course that you are studying?	53.91%	45.84%	0.17%	0.68%
9	How helpful was the career guidance and counseling provided by faculty members?	58.24%	41.61%	0.13%	0%
10	How effective was the usage of ICT tools and black board for teaching?	54.08%	45.70%	0.13%	0.07%
11	How well the syllabus enabled you to improve your ability to formulate, analyze and solve the problems?	57.04%	45.54%	0.31%	0.10%



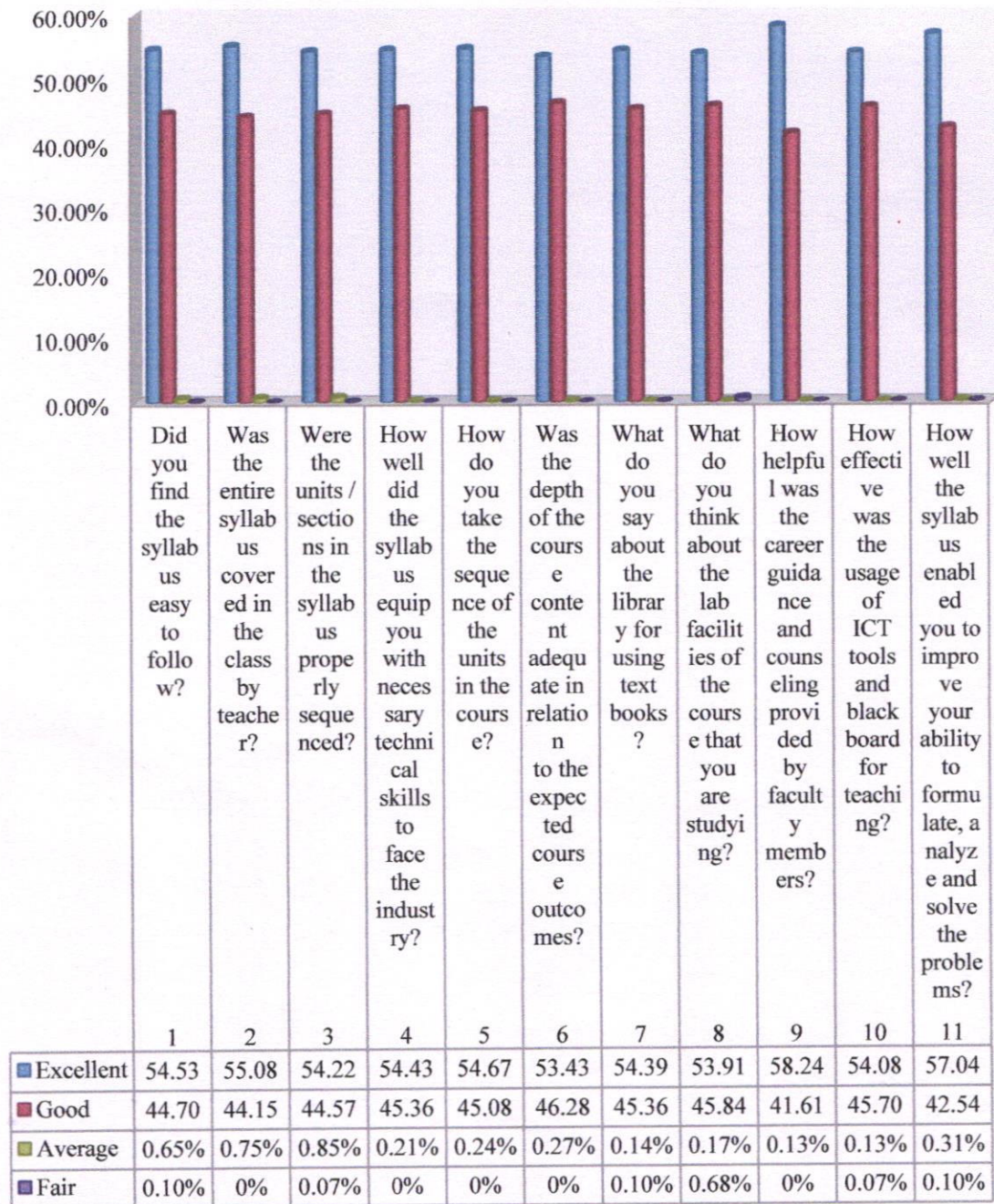

PRINCIPAL
KAILASH WOMEN'S COLLEGE
Tharamangalam-Nangavalli Main Road
Periyasoragai P.O, Nangavalli,
SALEM-636 502



KAILASH WOMEN'S COLLEGE

(Affiliated to Periyar University, Salem) (An ISO 9001:2015 Certified Institution) Nangavalli, Salem - 636502

Students feedback Analysis




PRINCIPAL
KAILASH WOMEN'S COLLEGE
 Tharamangalam-Nangavalli Main Road
 Periyasoragai P.O, Nangavalli,
 SALEM-636 502



KAILASH WOMEN'S COLLEGE

(Affiliated to Periyar University, Salem) (An ISO 9001:2015 Certified Institution) Nangavalli, Salem - 636502

FEEDBACK ANALYSIS – STUDENTS


B.com

IQAC collected feedback from students regarding syllabus completion, communication skills, teaching methodology and others in various aspects. The representations of feedback analysis report are as follow.

Summary table for Students Feedback (2021-22)

Sl.No	Particulars	Excellent	Good	Average	Fair
1	Did you find the syllabus easy to follow?	53.93%	44.97%	0.65%	0.42%
2	Was the entire syllabus covered in the class by teacher?	54.21%	44.81%	0.81%	0%
3	Were the units / sections in the syllabus properly sequenced?	54.21%	44.66%	0.89%	0.23%
4	How well did the syllabus equip you with necessary technical skills to face the industry?	54.55%	44.54%	0.89%	0%
5	How do you take the sequence of the units in the course?	54.17%	45.13%	0.69%	0%
6	Was the depth of the course content adequate in relation to the expected course outcomes?	54.79%	50.06%	0.27%	0%
7	What do you say about the library for using text books?	49.90%	49.24%	0.81%	0%
8	What do you think about the lab facilities of the course that you are studying?	54.63%	44.85%	0.50%	0%
9	How helpful was the career guidance and counseling provided by faculty members?	54.44%	44.97%	0.42%	1%
10	How effective was the usage of ICT tools and black board for teaching?	56.03%	43.42%	0.54%	0%
11	How well the syllabus enabled you to improve your ability to formulate, analyze and solve the problems?	54.09%	45.62%	0.23%	0%



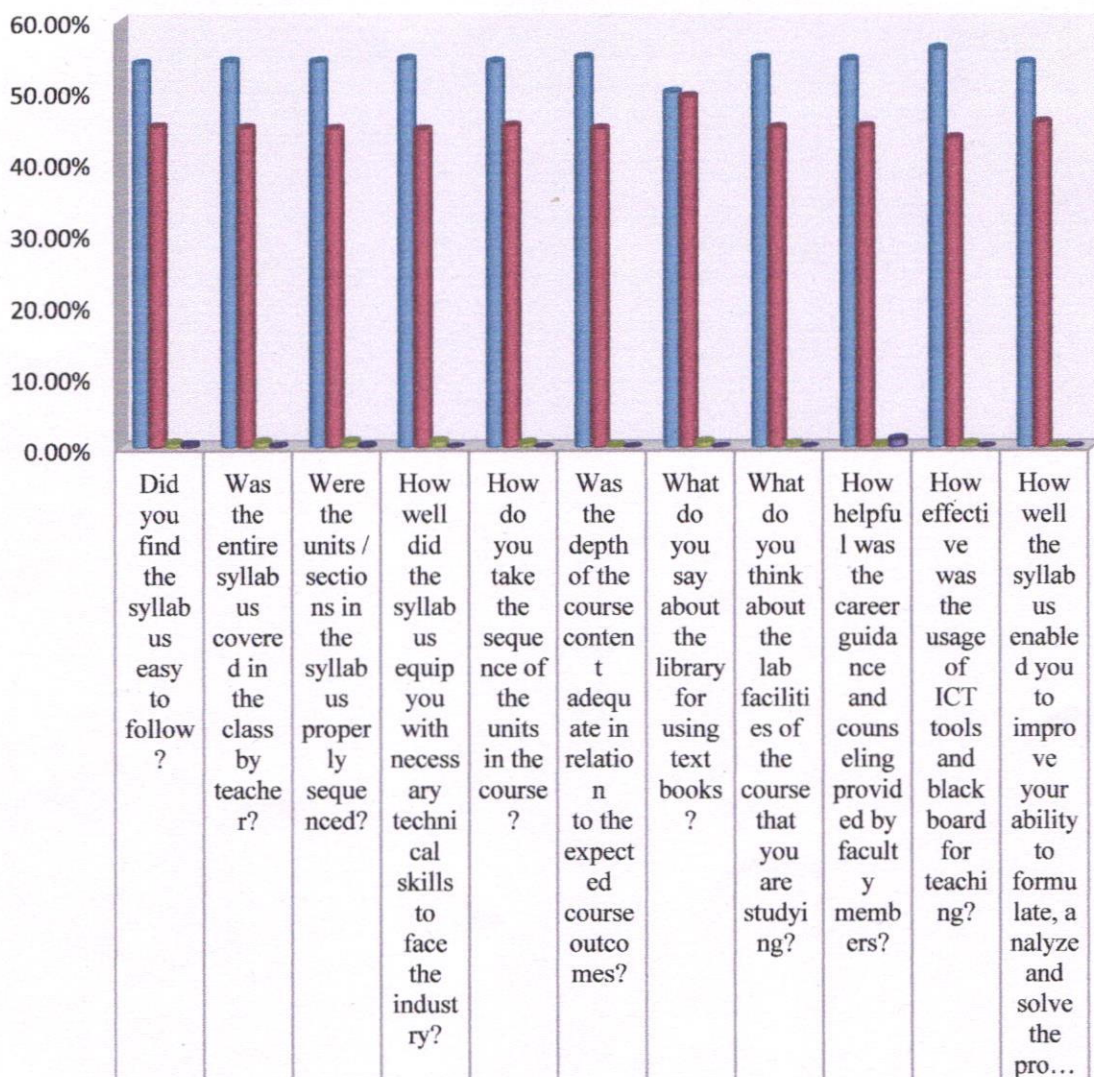

PRINCIPAL
KAILASH WOMEN'S COLLEGE
Tharamangalam-Nangavalli Main Road
Periyasoragai P.O. Nangavalli,
SALEM-636 502



KAILASH WOMEN'S COLLEGE

(Affiliated to Periyar University, Salem) (An ISO 9001:2015 Certified Institution) Nangavalli, Salem - 636502

Students Feedback Analysis



	1	2	3	4	5	6	7	8	9	10	11
■ Excellent	53.93%	54.21%	54.21%	54.55%	54.17%	54.79%	49.90%	54.63%	54.44%	56.03%	54.09%
■ Good	44.97%	44.81%	44.66%	44.54%	45.13%	44.70%	49.24%	44.85%	44.97%	43.42%	45.62%
■ Average	0.65%	0.81%	0.89%	0.89%	0.69%	0.34%	0.81%	0.50%	0.42%	0.54%	0.23%
■ Fair	0.42%	0%	0.23%	0%	0%	0%	0.00%	0.00%	1%	0.00%	0.00%



[Handwritten Signature]

PRINCIPAL
KAILASH WOMEN'S COLLEGE
 Tharamangalam-Nangavalli Main Road
 Periyasoragai P.O. Nangavalli
 SALEM-636 502



KAILASH WOMEN'S COLLEGE

(Affiliated to Periyar University, Salem) (An ISO 9001:2015 Certified Institution) Nangavalli, Salem - 636502

FEEDBACK ANALYSIS – STUDENTS

B.com (Computer Application)

IQAC collected feedback from students regarding syllabus completion, communication skills, teaching methodology and others in various aspects. The representations of feedback analysis report are as follow.

Summary table for Students Feedback

Sl.No	Particulars	Excellent	Good	Average	Fair
1	Did you find the syllabus easy to follow?	52.27%	47.29%	0.30%	0.12%
2	Was the entire syllabus covered in the class by teacher?	53.81%	45.40%	0.42%	0%
3	Were the units / sections in the syllabus properly sequenced?	49.78%	47.25%	1.38%	0.30%
4	How well did the syllabus equip you with necessary technical skills to face the industry?	52.14%	47.03%	0.81%	0%
5	How do you take the sequence of the units in the course?	52.53%	46.35%	1.11%	0%
6	Was the depth of the course content adequate in relation to the expected course outcomes?	51.75%	47.63%	0.60%	0%
7	What do you say about the library for using text books?	52.06%	46.78%	0.15%	0%
8	What do you think about the lab facilities of the course that you are studying?	52.01%	47.55%	0.42%	0%
9	How helpful was the career guidance and counseling provided by faculty members?	52.48%	45.27%	1.41%	0%
10	How effective was the usage of ICT tools and black board for teaching?	52.61%	47.03%	0.90%	0%
11	How well the syllabus enabled you to improve your ability to formulate, analyze and solve the problems?	52.01%	47.42%	0.52%	0%



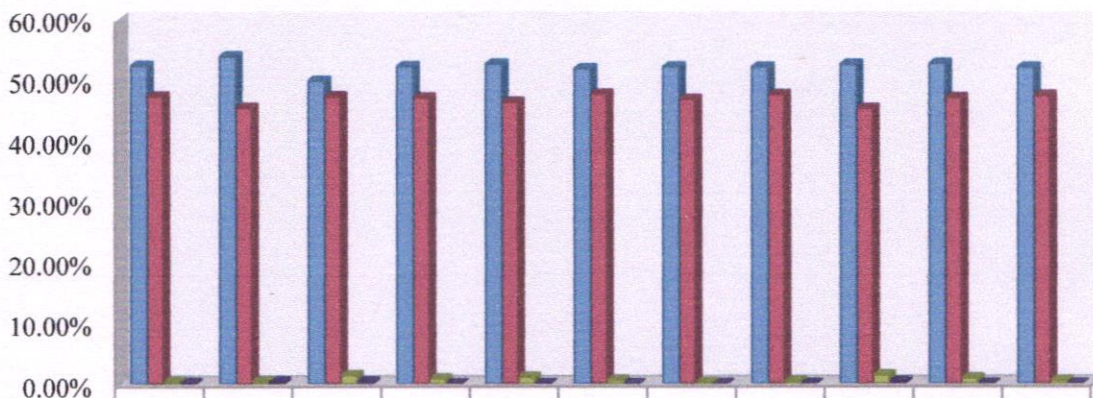

PRINCIPAL
KAILASH WOMEN'S COLLEGE
Tharamangalam-Nangavalli Main Road
Periyasoragai P.O, Nangavalli,
SALEM-636 502



KAILASH WOMEN'S COLLEGE

(Affiliated to Periyar University, Salem) (An ISO 9001:2015 Certified Institution) Nangavalli, Salem - 636502

Students Feedback Analysis



Did you find the syllabus easy to follow?	Was the entire syllabus covered in the class by teacher?	Were the units / sections in the syllabus properly sequenced?	How well did the syllabus equip you with necessary technical skills to face the industry?	How do you take the sequence of the units in the course?	Was the depth of the course content adequate in relation to the expected course outcomes?	What do you say about the library for using text books?	What do you think about the lab facilities of the course that you are studying?	How helpful was the career guidance and counseling provided by faculty members?	How effective was the usage of ICT tools and black board for teaching?	How well the syllabus enabled you to improve your ability to formulate, analyze and solve...
1	2	3	4	5	6	7	8	9	10	11

Excellent	52.27%	53.81%	49.78%	52.14%	52.53%	51.75%	52.06%	52.01%	52.48%	52.61%	52.01%
Good	47.29%	45.40%	47.25%	47.03%	46.35%	47.63%	46.78%	47.55%	45.27%	47.03%	47.42%
Average	0.30%	0.42%	1.38%	0.81%	1.11%	0.60%	0.15%	0.42%	1.41%	0.90%	0.52%
Fair	0.12%	0%	0.30%	0%	0%	0%	0.00%	0.00%	0%	0.00%	0.00%



PRINCIPAL
KAILASH WOMEN'S COLLEGE
 Tharamangalam-Nangavalli Main Roac.
 Periyasoragai P.O, Nangavalli,
 SALEM-636 502



KAILASH WOMEN'S COLLEGE

(Affiliated to Periyar University, Salem) (An ISO 9001:2015 Certified Institution) Nangavalli, Salem - 636502


FEEDBACK ANALYSIS – STUDENTS B.C.A.

IQAC collected feedback from students regarding syllabus completion, communication skills, teaching methodology and others in various aspects. The representations of feedback analysis report are as follow

Summary table for Students Feedback

Sl.No	Particulars	Excellent	Good	Average	Fair
1	Did you find the syllabus easy to follow?	43.33%	36.67%	3.67%	0.12%
2	Was the entire syllabus covered in the class by teacher?	40.00%	38.33%	3.33%	0%
3	Were the units / sections in the syllabus properly sequenced?	40.67%	26.67%	4.33%	0.30%
4	How well did the syllabus equip you with necessary technical skills to face the industry?	56.67%	43.33%	2.67%	0%
5	How do you take the sequence of the units in the course?	53.33%	40.00%	2.00%	0%
6	Was the depth of the course content adequate in relation to the expected course outcomes?	50.00%	46.67%	3.00%	0%
7	What do you say about the library for using text books?	46.67%	43.33%	4.67%	0.03%
8	What do you think about the lab facilities of the course that you are studying?	56.67%	40.00%	3.67%	0.06%
9	How helpful was the career guidance and counseling provided by faculty members?	40.00%	35.00%	2.67%	0%
10	How effective was the usage of ICT tools and black board for teaching?	43.33%	47.03%	0.00%	0.50%
11	How well the syllabus enabled you to improve your ability to formulate, analyze and solve the problems?	52.01%	40.00%	3.33%	0.06%



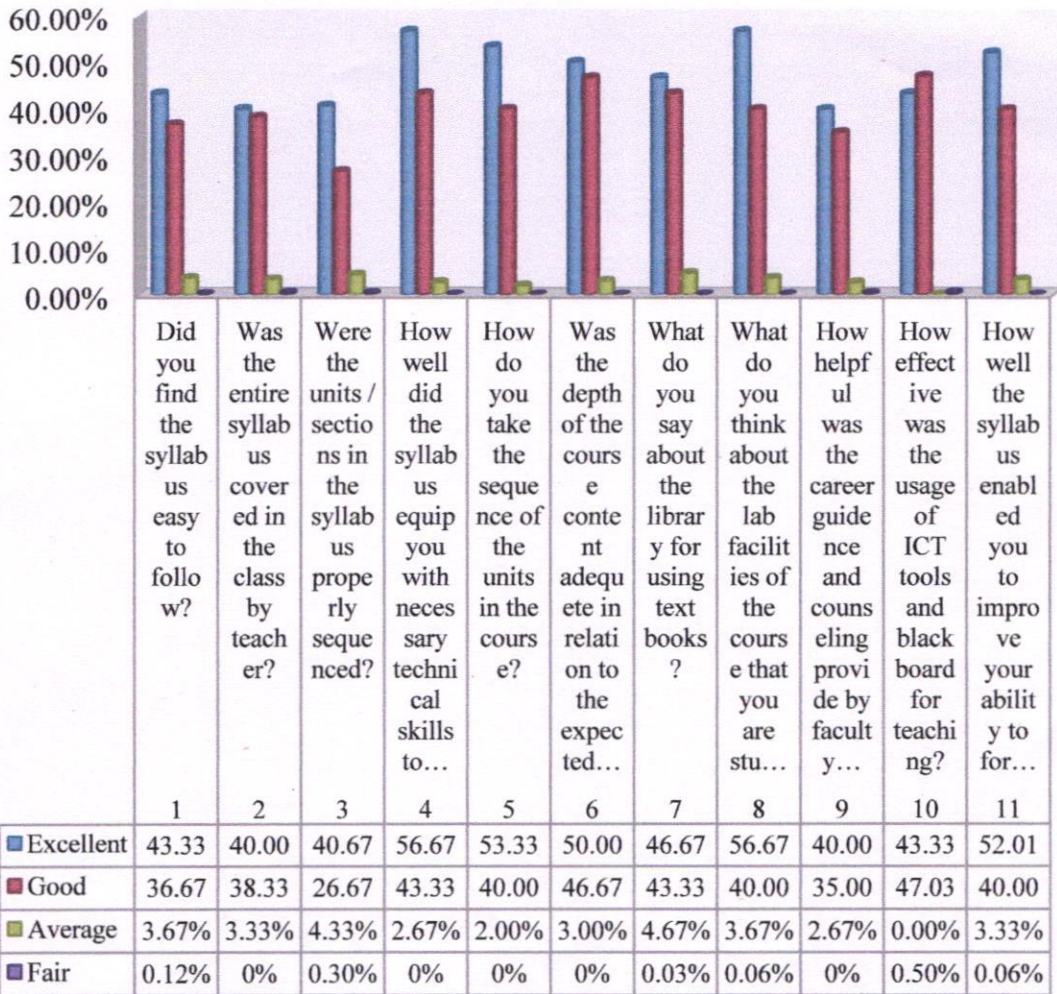

PRINCIPAL
KAILASH WOMEN'S COLLEGE
Tharamangalam-Nangavalli Main Road
Periyasoragai P.O, Nangavalli
SALEM-636 502



KAILASH WOMEN'S COLLEGE

(Affiliated to Periyar University, Salem) (An ISO 9001:2015 Certified Institution) Nangavalli, Salem - 636502

Student Feedback Analysis




PRINCIPAL
KAILASH WOMEN'S COLLEGE
 Tharamangalam-Nangavalli Main Road
 Periyasoragai P.O., Nangavalli
 SALEM-636502



KAILASH WOMEN'S COLLEGE

(Affiliated to Periyar University, Salem) (An ISO 9001:2015 Certified Institution) Nangavalli, Salem - 636502

FEEDBACK ANALYSIS – STUDENTS

B.Sc Biotechnology

IQAC collected feedback from students regarding syllabus completion, communication skills, teaching methodology and others in various aspects. The representations of feedback analysis report are as follow.

Summary table for Students Feedback

Sl.No	Particulars	Excellent	Good	Average	Fair
1	Did you find the syllabus easy to follow?	52.27%	47.29%	0.30%	0.12%
2	Was the entire syllabus covered in the class by teacher?	53.81%	45.40%	0.42%	0%
3	Were the units / sections in the syllabus properly sequenced?	49.78%	47.25%	1.38%	0.30%
4	How well did the syllabus equip you with necessary technical skills to face the industry?	52.14%	47.03%	0.81%	0%
5	How do you take the sequence of the units in the course?	52.53%	46.35%	1.11%	0%
6	Was the depth of the course content adequate in relation to the expected course outcomes?	51.75%	47.63%	0.60%	0%
7	What do you say about the library for using text books?	52.06%	46.78%	0.15%	0.00%
8	What do you think about the lab facilities of the course that you are studying?	52.01%	47.55%	0.42%	0.00%
9	How helpful was the career guidance and counselling provided by faculty members?	52.48%	45.27%	1.41%	0%
10	How effective was the usage of ICT tools and black board for teaching?	52.61%	47.03%	0.90%	0.00%
11	How well the syllabus enabled you to improve your ability to formulate, analyze and solve the problems?	52.01%	47.42%	0.52%	0.00%



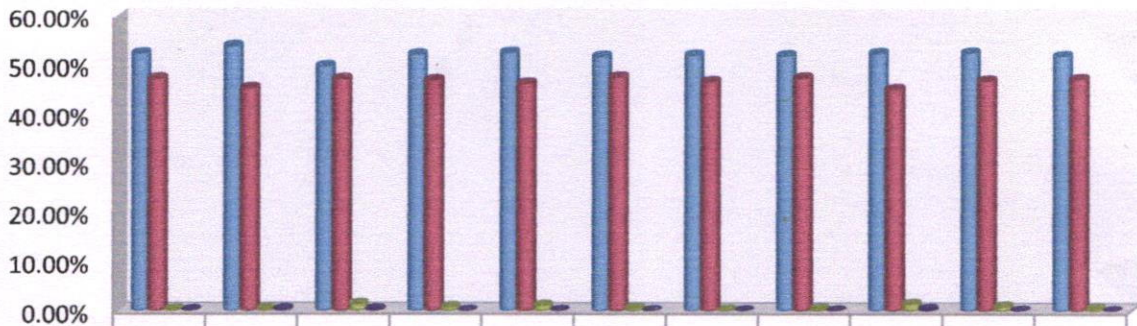

PRINCIPAL
KAILASH WOMEN'S COLLEGE
Tharamangalam-Nangavalli Main Road
Periyasoragai P.O, Nangavalli,
SALEM-636 502



KAILASH WOMEN'S COLLEGE

(Affiliated to Periyar University, Salem) (An ISO 9001:2015 Certified Institution) Nangavalli, Salem - 636502

Student Feedback Analysis



1	2	3	4	5	6	7	8	9	10	11
Did you find the syllabus easy to follow?	Was the entire syllabus covered in the class by teacher?	Were the units / sections in the syllabus properly sequenced?	How well did the syllabus equip you with necessary technical skills to face the industry?	How do you take the sequence of the units in the course?	Was the depth of the course content adequate in relation to the expected course outcome...	What do you say about the library for using text books?	What do you think about the lab facilities of the course that you are studying?	How helpful was the career guidance and counseling provided by faculty members?	How effective was the usage of ICT tools and blackboard for teaching?	How well the syllabus enabled you to improve your ability to formulate, analyze and...

	1	2	3	4	5	6	7	8	9	10	11
■ Excellent	52.27%	53.81%	49.78%	52.14%	52.53%	51.75%	52.06%	52.01%	52.48%	52.61%	52.01%
■ Good	47.29%	45.40%	47.25%	47.03%	46.35%	47.63%	46.78%	47.55%	45.27%	47.03%	47.42%
■ Average	0.30%	0.42%	1.38%	0.81%	1.11%	0.60%	0.15%	0.42%	1.41%	0.90%	0.52%
■ Fair	0.12%	0%	0.30%	0%	0%	0%	0.00%	0.00%	0%	0.00%	0.00%




PRINCIPAL
KAILASH WOMEN'S COLLEGE
 Tharamangalam-Nangavalli Main Road
 Periyasoragai P.O. Nangavalli,
 SALEM-636 502



KAILASH WOMEN'S COLLEGE

(Affiliated to Periyar University, Salem) (An ISO 9001:2015 Certified Institution) Nangavalli, Salem - 636502

FEEDBACK ANALYSIS – STUDENTS

B.Sc Botany

IQAC collected feedback from students regarding syllabus completion, communication skills, teaching methodology and others in various aspects. The representations of feedback analysis report are as follow.

Summary table for Students Feedback

Sl.No	Particulars	Excellent	Good	Average	Fair
1	Did you find the syllabus easy to follow?	50.27%	47.33%	2.24%	0.17%
2	Was the entire syllabus covered in the class by teacher?	52.55%	44.27%	2.92%	0%
3	Were the units / sections in the syllabus properly sequenced?	61.13%	36.88%	1.63%	0.36%
4	How well did the syllabus equip you with necessary technical skills to face the industry?	56.44%	42.01%	1.17%	0%
5	How do you take the sequence of the units in the course?	51.22%	46.38%	2.09%	0%
6	Was the depth of the course content adequate in relation to the expected course outcomes?	53.21%	44.90%	1.75%	0%
7	What do you say about the library for using text books?	60.33%	38.10%	0.17%	0.41%
8	What do you think about the lab facilities of the course that you are studying?	51.90%	46.96%	0.95%	0.19%
9	How helpful was the career guidance and counseling provided by faculty members?	49.54%	46.30%	2.89%	0%
10	How effective was the usage of ICT tools and black board for teaching?	51.38%	46.09%	2.31%	0.22%
11	How well the syllabus enabled you to improve your ability to formulate, analyze and solve the problems?	51.36%	46.48%	1.92%	0.24%



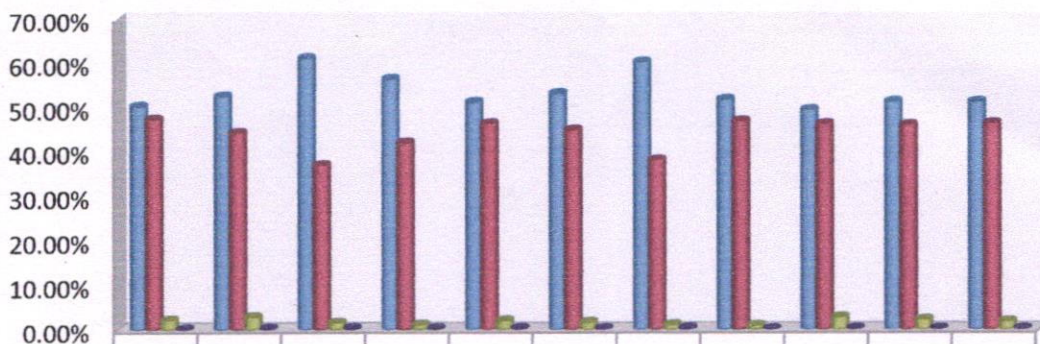
PRINCIPAL
KAILASH WOMEN'S COLLEGE
Tharamangalam-Nangavalli Main Road
Periyasoragai P.O, Nangavalli
SALEM-636 502



KAILASH WOMEN'S COLLEGE

(Affiliated to Periyar University, Salem) (An ISO 9001:2015 Certified Institution) Nangavalli, Salem - 636502

Student Feedback Analysis



Question	1	2	3	4	5	6	7	8	9	10	11
Did you find the syllabus easy to follow?											
Was the entire syllabus covered in the class by teacher?											
Were the units / sections in the syllabus properly sequenced?											
How well did the syllabus equip you with necessary technical skills to face the...											
How do you take the sequence of the units in the course?											
Was the depth of the course content adequate in relation to the expected course...											
What do you say about the library for using text books?											
What do you think about the lab facilities of the course that you are studying?											
How helpful was the career guidance and counseling provided by faculty members?											
How effective was the usage of ICT tools and black board for teaching?											
How well the syllabus enabled you to improve your ability to formulate, analyze...											

	1	2	3	4	5	6	7	8	9	10	11
Excellent	50.27	52.55	61.13	56.44	51.22	53.21	60.33	51.90	49.54	51.38	51.36
Good	47.33	44.27	36.88	42.01	46.38	44.90	38.10	46.96	46.30	46.09	46.48
Average	2.24%	2.92%	1.63%	1.17%	2.09%	1.75%	1.17%	0.95%	2.89%	2.31%	1.92%
Fair	0.17%	0%	0.36%	0%	0%	0%	0.41%	0.19%	0%	0.22%	0.24%



PRINCIPAL
KAILASH WOMEN'S COLLEGE
 Tharamangalam-Nangavalli Main Road
 Periyasoragai P.O, Nangavalli
 SALEM-636 502



KAILASH WOMEN'S COLLEGE

(Affiliated to Periyar University, Salem) (An ISO 9001:2015 Certified Institution) Nangavalli, Salem - 636502


FEEDBACK ANALYSIS – STUDENTS

B.Sc Chemistry

IQAC collected feedback from students regarding syllabus completion, communication skills, teaching methodology and others in various aspects. The representations of feedback analysis report are as follow.

Summary table for Students Feedback					
Sl.No	Particulars	Excellent	Good	Average	Fair
1	Did you find the syllabus easy to follow?	43.33%	36.67%	3.67%	0.12%
2	Was the entire syllabus covered in the class by teacher?	40.00%	38.33%	3.33%	0%
3	Were the units / sections in the syllabus properly sequenced?	40.67%	26.67%	4.33%	0.30%
4	How well did the syllabus equip you with necessary technical skills to face the industry?	56.67%	43.33%	2.67%	0%
5	How do you take the sequence of the units in the course?	53.33%	40.00%	2.00%	0%
6	Was the depth of the course content adequate in relation to the expected course outcomes?	50.00%	46.67%	3.00%	0%
7	What do you say about the library for using text books?	46.67%	43.33%	4.67%	0.03%
8	What do you think about the lab facilities of the course that you are studying?	56.67%	40.00%	3.67%	0.06%
9	How helpful was the career guidance and counseling provided by faculty members?	40.00%	35.00%	2.67%	0%
10	How effective was the usage of ICT tools and black board for teaching?	43.33%	47.03%	0.00%	0.50%
11	How well the syllabus enabled you to improve your ability to formulate, analyze and solve the problems?	52.01%	40.00%	3.33%	0.06%



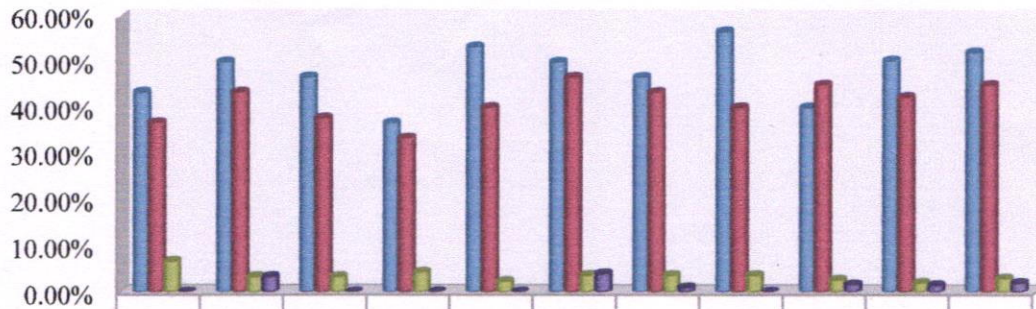

PRINCIPAL
KAILASH WOMEN'S COLLEGE
Tharamangalam-Nangavalli Main Road
Periyasoragai P.O, Nangavalli,
SALEM-636 502



KAILASH WOMEN'S COLLEGE

(Affiliated to Periyar University, Salem) (An ISO 9001:2015 Certified Institution) Nangavalli, Salem - 636502

Student Feedback Analysis



Question	1	2	3	4	5	6	7	8	9	10	11
Did you find the syllabus easy to follow?	43.33	50.00	46.67	36.67	53.33	50.00	46.67	56.67	40.00	50.33	52.20
Was the entire syllabus covered in the class by teacher?	36.67	43.33	37.67	33.33	40.00	46.67	43.33	40.00	45.00	42.32	45.00
Were the units / sections in the syllabus properly sequenced?	46.67	37.67	33.32	4.33	2.33	3.67	3.67	3.67	2.67	2.00	3.00
How well did the syllabus equip you with necessary technical skills to face...	36.67	33.33	4.33	0%	0%	4%	1.00	0.00	2%	1.50	2.00
How do you take the sequence of the units in the course?	53.33	40.00	2.33	0%	0%	4%	1.00	0.00	2%	1.50	2.00
Was the depth of the course content adequate in relation to the expected course...	50.00	46.67	3.67	3.67	3.67	3.67	3.67	3.67	2.67	2.00	3.00
What do you say about the library for using text books?	46.67	43.33	3.67	3.67	3.67	3.67	3.67	3.67	2.67	2.00	3.00
What do you think about the facilities of the course that you are studying?	56.67	40.00	3.67	3.67	3.67	3.67	3.67	3.67	2.67	2.00	3.00
How helpful was the career guidance and counseling provided by faculty members?	40.00	45.00	2.67	2.67	2.67	2.67	2.67	2.67	2.67	2.00	3.00
How effective was the usage of ICT tools and blackboard for teaching?	50.33	42.32	2.00	2.00	2.00	2.00	2.00	2.00	2.00	2.00	2.00
How well the syllabus enabled you to improve your ability to formulate, a nal...	52.20	45.00	3.00	3.00	3.00	3.00	3.00	3.00	3.00	3.00	3.00



[Handwritten Signature]

PRINCIPAL
KAILASH WOMEN'S COLLEGE
 Tharamangalam-Nangavalli Main Road
 Periyasoragai P.O, Nangavalli,
 SALEM-636 502



KAILASH WOMEN'S COLLEGE

(Affiliated to Periyar University, Salem) (An ISO 9001:2015 Certified Institution) Nangavalli, Salem - 636502

FEEDBACK ANALYSIS – STUDENTS

B.Sc Computer Science

IQAC collected feedback from students regarding syllabus completion, communication skills, teaching methodology and others in various aspects. The representations of feedback analysis report are as follow.

Summary table for Students Feedback

Sl.No	Particulars	Excellent	Good	Average	Fair
1	Did you find the syllabus easy to follow?	51.75%	47.63%	0.60%	2%
2	Was the entire syllabus covered in the class by teacher?	52.01%	47.55%	0.42%	0%
3	Were the units / sections in the syllabus properly sequenced?	53.81%	45.40%	6%	4%
4	How well did the syllabus equip you with necessary technical skills to face the industry?	52.48%	45.27%	1.41%	1%
5	How do you take the sequence of the units in the course?	53.81%	45.40%	4%	2%
6	Was the depth of the course content adequate in relation to the expected course outcomes?	52.53%	46.35%	1.11%	1%
7	What do you say about the library for using text books?	52.61%	47.03%	0.90%	1.65%
8	What do you think about the lab facilities of the course that you are studying?	52.01%	47.55%	0.42%	0%
9	How helpful was the career guidance and counseling provided by faculty members?	49.78%	47.25%	1.38%	0.30%
10	How effective was the usage of ICT tools and black board for teaching?	52.14%	50%	0.81%	3%
11	How well the syllabus enabled you to improve your ability to formulate, analyze and solve the problems?	52.53%	46.35%	1.11%	1%

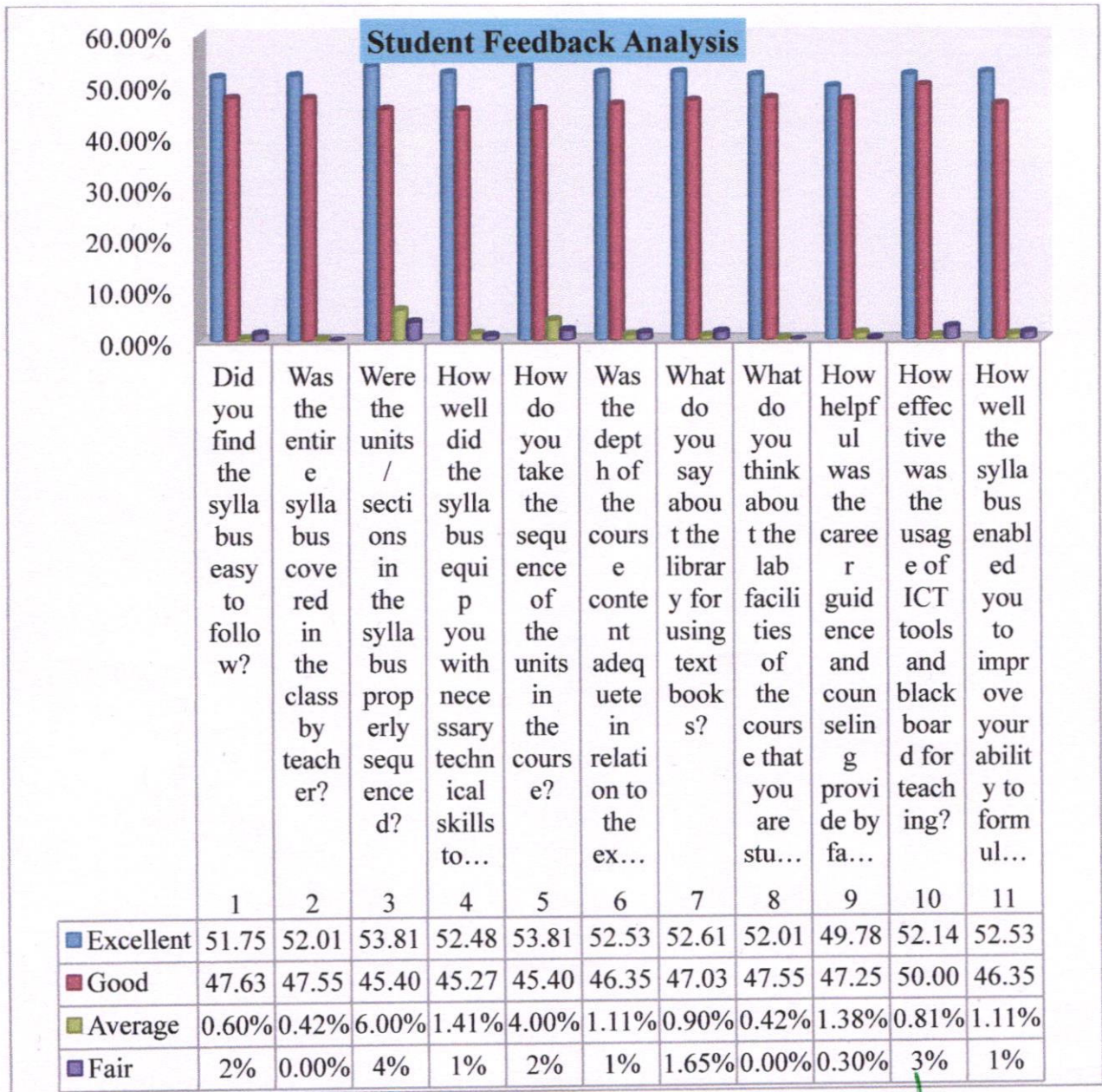


PRINCIPAL
KAILASH WOMEN'S COLLEGE
Tharamangalam-Nangavalli Main Roac
Periyasoragai P.O, Nangavalli,
SALEM-636 502



KAILASH WOMEN'S COLLEGE

(Affiliated to Periyar University, Salem) (An ISO 9001:2015 Certified Institution) Nangavalli, Salem - 636502




PRINCIPAL
KAILASH WOMEN'S COLLEGE
 Tharamangalam-Nangavalli Main Road
 Periyasoragai P.O. Nangavalli,
 SALEM-636 502



KAILASH WOMEN'S COLLEGE

(Affiliated to Periyar University, Salem) (An ISO 9001:2015 Certified Institution) Nangavalli, Salem - 636502

FEEDBACK ANALYSIS – STUDENTS

B.Sc Mathematics

IQAC collected feedback from students regarding syllabus completion, communication skills, teaching methodology and others in various aspects. The representations of feedback analysis report are as follow.

Summary table for Students Feedback					
Sl.No	Particulars	Excellent	Good	Average	Fair
1	Did you find the syllabus easy to follow?	50.87%	47.39%	2.24%	0.17%
2	Was the entire syllabus covered in the class by teacher?	54.33%	44.35%	2.92%	0%
3	Were the units / sections in the syllabus properly sequenced?	60.43%	40.43%	1.63%	0.36%
4	How well did the syllabus equip you with necessary technical skills to face the industry?	50.43%	37.39%	1.17%	0%
5	How do you take the sequence of the units in the course?	58.48%	49.46%	2.09%	0%
6	Was the depth of the course content adequate in relation to the expected course outcomes?	58.26%	36.96%	1.75%	0%
7	What do you say about the library for using text books?	51.74%	43.04%	1.17%	0.41%
8	What do you think about the lab facilities of the course that you are studying?	59.13%	40%	0.95%	0.19%
9	How helpful was the career guidance and counseling provided by faculty members?	56.96%	44.78%	2.89%	0%
10	How effective was the usage of ICT tools and black board for teaching?	62.17%	47.39%	2.31%	0.22%
11	How well the syllabus enabled you to improve your ability to formulate, analyze and solve the problems?	63.91%	38.26%	1.92%	0.24%



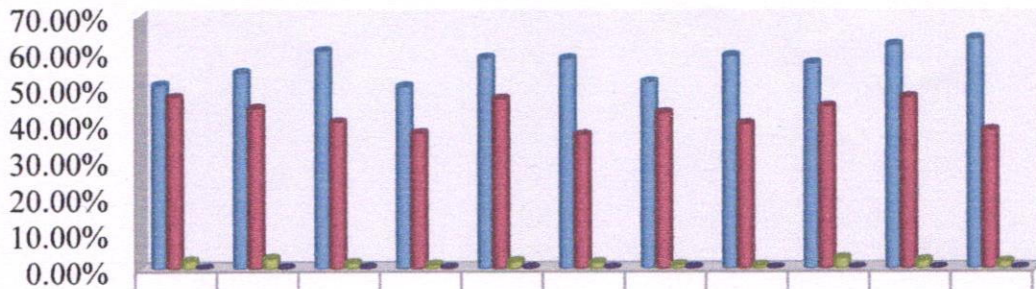

PRINCIPAL
KAILASH WOMEN'S COLLEGE
Tharamangalam-Nangavalli Main Road
Periyasoragai P.O, Nangavalli,
SALEM-636 502



KAILASH WOMEN'S COLLEGE

(Affiliated to Periyar University, Salem) (An ISO 9001:2015 Certified Institution) Nangavalli, Salem - 636502

Student Feedback Analysis



	1	2	3	4	5	6	7	8	9	10	11	
Did you find the syllabus easy to follow?	50.8	47.3	2.24	0.17	58.4	46.9	2.09	0%	59.1	44.7	2.89	0%
Was the entire syllabus covered in the class by teacher?	54.3	44.3	2.92	0%	40.4	37.3	1.17	0%	62.1	47.3	2.31	0.22
Were the units / sections in the syllabus properly sequen...	60.4	40.4	1.63	0.36	50.4	37.3	1.17	0%	56.9	44.7	2.89	0%
How well did the syllabus equip you with necessary techni...	50.4	37.3	1.17	0%	58.4	46.9	2.09	0%	59.1	44.7	2.89	0%
How do you take the sequence of the units in the course?	58.4	46.9	2.09	0%	58.2	36.9	1.75	0%	56.9	44.7	2.89	0%
Was the depth of the course content adequate in relation...	58.2	36.9	1.75	0%	51.7	43.0	1.17	0.41	59.1	44.7	2.89	0.19
What do you say about the library for using text books?	51.7	43.0	1.17	0.41	59.1	40.0	0.95	0.19	56.9	44.7	2.89	0%
What do you think about the lab facilities of the course th...	59.1	40.0	0.95	0.19	56.9	44.7	2.89	0%	62.1	47.3	2.31	0.22
How helpful was the career guidance and counseling pr...	56.9	44.7	2.89	0%	62.1	47.3	2.31	1.92	63.9	38.2	1.92	0.24
How effective was the usage of ICT tools and black board...	62.1	47.3	2.31	0.22	63.9	38.2	1.92	0.24				
How well the syllabus enabled you to improve your ability...	63.9	38.2	1.92	0.24								
Excellent	50.8	54.3	60.4	50.4	58.4	58.2	51.7	59.1	56.9	62.1	63.9	
Good	47.3	44.3	40.4	37.3	46.9	36.9	43.0	40.0	44.7	47.3	38.2	
Average	2.24	2.92	1.63	1.17	2.09	1.75	1.17	0.95	2.89	2.31	1.92	
Fair	0.17	0%	0.36	0%	0%	0%	0.41	0.19	0%	0.22	0.24	



[Handwritten Signature]

PRINCIPAL
KAILASH WOMEN'S COLLEGE
 Tharamangalam-Nangavalli Main Road
 Periyasoragai P.O, Nangavalli,
 SALEM-636 502



KAILASH WOMEN'S COLLEGE

(Affiliated to Periyar University, Salem) (An ISO 9001:2015 Certified Institution) Nangavalli, Salem - 636502

FEEDBACK ANALYSIS – STUDENTS

B.Sc Microbiology

IQAC collected feedback from students regarding syllabus completion, communication skills, teaching methodology and others in various aspects. The representations of feedback analysis report are as follow.

Summary table for Students Feedback

Sl.No	Particulars	Excellent	Good	Average	Fair
1	Did you find the syllabus easy to follow?	51.27%	45.76%	1.91%	0.85%
2	Was the entire syllabus covered in the class by teacher?	50.42%	45.43%	2.54%	1%
3	Were the units / sections in the syllabus properly sequenced?	54.66%	40.04%	3.18%	1.91%
4	How well did the syllabus equip you with necessary technical skills to face the industry?	54.24%	43.01%	1.48%	1%
5	How do you take the sequence of the units in the course?	50.64%	42.80%	3.60%	3%
6	Was the depth of the course content adequate in relation to the expected course outcomes?	49.79%	48.52%	1.06%	1%
7	What do you say about the library for using text books?	52.33%	41.72%	3.39%	2.54%
8	What do you think about the lab facilities of the course that you are studying?	53.60%	39.19%	4.03%	3.18%
9	How helpful was the career guidance and counseling provided by faculty members?	62.71%	32.42%	2.97%	2%
10	How effective was the usage of ICT tools and black board for teaching?	49.15%	43.01%	4.24%	3.39%
11	How well the syllabus enabled you to improve your ability to formulate, analyze and solve the problems?	52.12%	42.16%	2.75%	2.12%



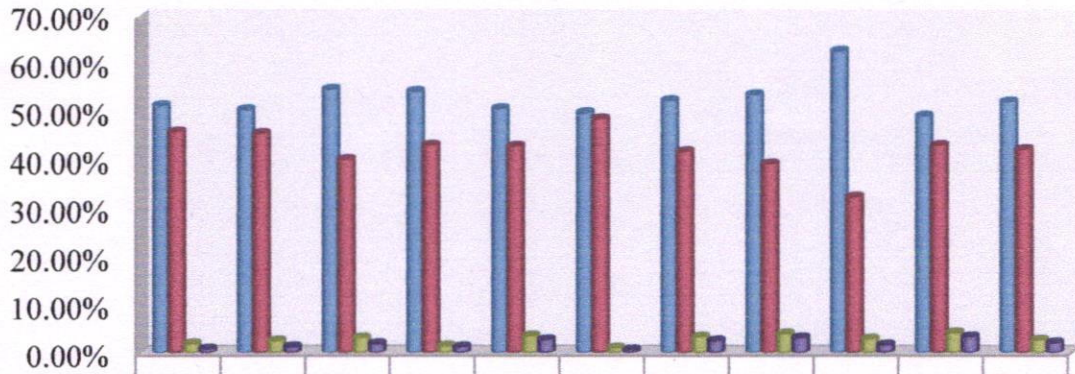

PRINCIPAL
KAILASH WOMEN'S COLLEGE
Tharamangalam-Nangavalli Main Road
Periyasoragai P.O, Nangavalli,
SALEM-636 502



KAILASH WOMEN'S COLLEGE

(Affiliated to Periyar University, Salem) (An ISO 9001:2015 Certified Institution) Nangavalli, Salem - 636502

Student Feedback Analysis



	1	2	3	4	5	6	7	8	9	10	11
■ Excellent	51.2	50.4	54.6	54.2	50.6	49.7	52.3	53.6	62.7	49.1	52.1
■ Good	45.7	45.4	40.0	43.0	42.8	48.5	41.7	39.1	32.4	43.0	42.1
■ Average	1.91	2.54	3.18	1.48	3.60	1.06	3.39	4.03	2.97	4.24	2.75
■ Fair	0.85	1%	1.91	1%	3%	1%	2.54	3.18	2%	3.39	2.12



[Signature]

PRINCIPAL
KAILASH WOMEN'S COLLEGE
 Tharamangalam-Nangavalli Main Road
 Periyasoragai P.O, Nangavalli,
 SALEM-636 502



KAILASH WOMEN'S COLLEGE

(Affiliated to Periyar University, Salem) (An ISO 9001:2015 Certified Institution) Nangavalli, Salem - 636502

FEEDBACK ANALYSIS – STUDENTS

B.Sc Nutrition and Dietetics

IQAC collected feedback from students regarding syllabus completion, communication skills, teaching methodology and others in various aspects. The representations of feedback analysis report are as follow.

Summary table for Students Feedback					
Sl.No	Particulars	Excellent	Good	Average	Fair
1	Did you find the syllabus easy to follow?	53.30%	44.34%	2.25%	0.12%
2	Was the entire syllabus covered in the class by teacher?	50.19%	47.42%	1.46%	0.21%
3	Were the units / sections in the syllabus properly sequenced?	62.24%	36.58%	0.90%	0.28
4	How well did the syllabus equip you with necessary technical skills to face the industry?	50.80%	46.26%	2.20%	0.19%
5	How do you take the sequence of the units in the course?	51.47%	46.26%	1.97%	0.30%
6	Was the depth of the course content adequate in relation to the expected course outcomes?	50.66%	48.46%	0.74%	0.14%
7	What do you say about the library for using text books?	54.97%	43.29%	1.53%	0.21%
8	What do you think about the lab facilities of the course that you are studying?	51.59%	46.03%	2.06%	0.32%
9	How helpful was the career guidance and counseling provided by faculty members?	53.88%	43.80%	1.92%	0.39
10	How effective was the usage of ICT tools and black board for teaching?	55.90%	42.07%	1.78%	0.25%
11	How well the syllabus enabled you to improve your ability to formulate, analyze and solve the problems?	52%	46.77%	1.39%	0.30%



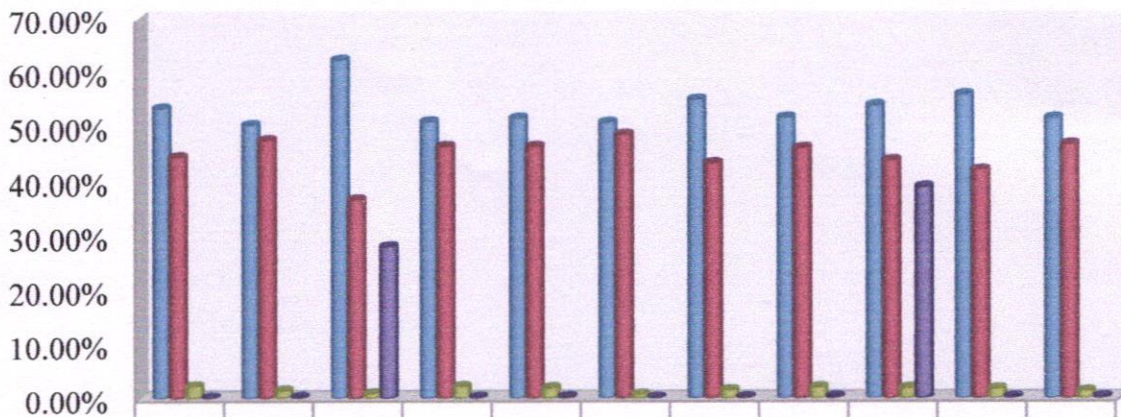
PRINCIPAL
KAILASH WOMEN'S COLLEGE
Tharamangalam-Nangavalli Main Road
Periyasoragai P.O, Nangavalli,
SALEM-636 502



KAILASH WOMEN'S COLLEGE

(Affiliated to Periyar University, Salem) (An ISO 9001:2015 Certified Institution) Nangavalli, Salem - 636502

Student Feedback Analysis



	1	2	3	4	5	6	7	8	9	10	11
Did you find the syllabus easy to follow?	53.30	50.19	62.24	50.80	51.47	50.66	54.97	51.59	53.88	55.90	52%
Was the entire syllabus covered in the class by teacher?	44.34	47.42	36.58	46.26	46.26	48.46	43.29	46.03	43.80	42.07	46.77
Were the units / sections in the syllabus properly sequenced?	2.25%	1.46%	0.90%	2.20%	1.97%	0.74%	1.53%	2.06%	1.92%	1.78%	1.39%
How well did the syllabus equip you with necessary technical skills to face the...	0.12%	0.21%	0.28	0.19%	0.30%	0.14%	0.21%	0.32%	0.39	0.25%	0.30%
How do you take the sequence of the units in the course?											
Was the depth of the course content adequate in relation to the expected...											
What do you say about the library for using textbooks?											
What do you think about the lab facilities of the course that you are studying?											
How helpful was the career guidance and counselling provided by faculty...											
How effective was the usage of ICT tools and black board for teaching?											
How well the syllabus enabled you to improve your ability to formulate...											



[Handwritten Signature]

PRINCIPAL
KAILASH WOMEN'S COLLEGE
 Tharamangalam-Nangavalli Main Road
 Periyasoragai P.O, Nangavalli,
 SALEM-636 502



KAILASH WOMEN'S COLLEGE

(Affiliated to Periyar University, Salem) (An ISO 9001:2015 Certified Institution) Nangavalli, Salem - 636502

FEEDBACK ANALYSIS – STUDENTS

B.Sc Physics

IQAC collected feedback from students regarding syllabus completion, communication skills, teaching methodology and others in various aspects. The representations of feedback analysis report are as follow.

Summary table for Students Feedback					
Sl.No	Particulars	Excellent	Good	Average	Fair
1	Did you find the syllabus easy to follow?	50.98%	46.72%	2.01%	0.30%
2	Was the entire syllabus covered in the class by teacher?	55.06%	43.00%	1.73%	0%
3	Were the units / sections in the syllabus properly sequenced?	65.87%	31.51%	2.23%	0.39%
4	How well did the syllabus equip you with necessary technical skills to face the industry?	51.23%	46.26%	2.26%	0%
5	How do you take the sequence of the units in the course?	54.88%	43.07%	1.69%	0%
6	Was the depth of the course content adequate in relation to the expected course outcomes?	50.89%	47.36%	1.49%	0%
7	What do you say about the library for using text books?	55.15%	43.18%	1.35%	0.32%
8	What do you think about the lab facilities of the course that you are studying?	57.39%	41.02%	1.48%	0.11%
9	How helpful was the career guidance and counseling provided by faculty members?	51.64%	47.08%	1.07%	0%
10	How effective was the usage of ICT tools and black board for teaching?	51.71%	46.22%	1.78%	0.36%
11	How well the syllabus enabled you to improve your ability to formulate, analyze and solve the problems?	53.64%	44.14%	2.35%	0.18%



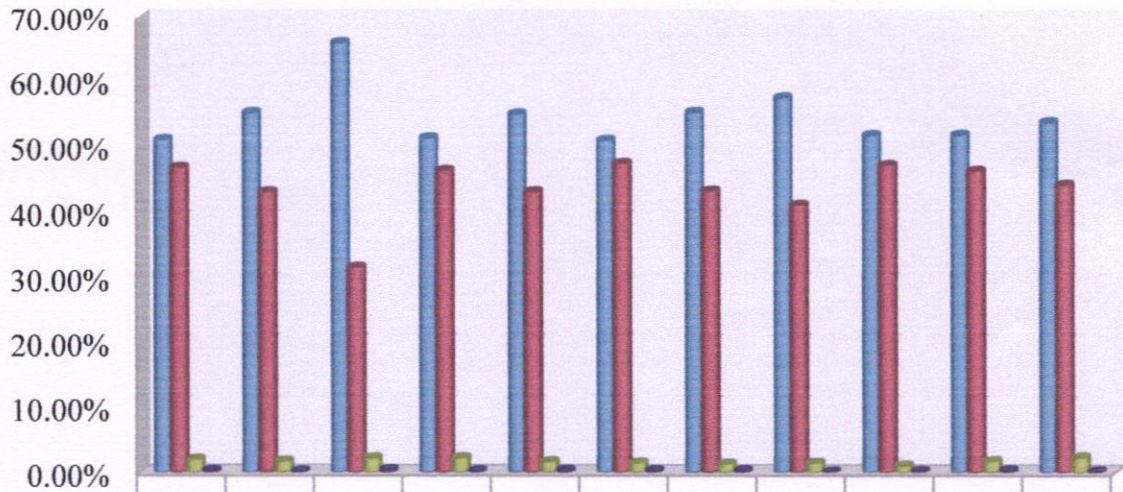

PRINCIPAL
KAILASH WOMEN'S COLLEGE
Tharamangalam-Nangavalli Main Road
Periyasoragai P.O, Nangavalli,
SALEM-636 502



KAILASH WOMEN'S COLLEGE

(Affiliated to Periyar University, Salem) (An ISO 9001:2015 Certified Institution) Nangavalli, Salem - 636502

Student Feedback Analysis



	1	2	3	4	5	6	7	8	9	10	11
■ Excellent	50.9	55.0	65.8	51.2	54.8	50.8	55.1	57.3	51.6	51.7	53.6
■ Good	46.7	43.0	31.5	46.2	43.0	47.3	43.1	41.0	47.0	46.2	44.1
■ Average	2.01	1.73	2.23	2.26	1.69	1.49	1.35	1.48	1.07	1.78	2.35
■ Fair	0.30	0%	0.39	0%	0%	0%	0.32	0.11	0%	0.36	0.18




PRINCIPAL
KAILASH WOMEN'S COLLEGE
 Tharamangalam-Nangavalli Main Road
 Periyasoragai P.O, Nangavalli,
 SALEM-636 502



KAILASH WOMEN'S COLLEGE

(Affiliated to Periyar University, Salem) (An ISO 9001:2015 Certified Institution) Nangavalli, Salem - 636502

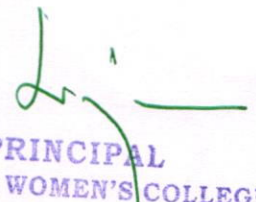
FEEDBACK ANALYSIS – STUDENTS

B.Sc Textile and Fashion Designing

IQAC collected feedback from students regarding syllabus completion, communication skills, teaching methodology and others in various aspects. The representations of feedback analysis report are as follow

Summary table for Students Feedback					
Sl.No	Particulars	Excellent	Good	Average	Fair
1	Did you find the syllabus easy to follow?	42.86%	35.14%	3.14%	2.86%
2	Was the entire syllabus covered in the class by teacher?	40.00%	40%	2.29%	0%
3	Were the units / sections in the syllabus properly sequenced?	47.14%	35.00%	6.71%	0.00%
4	How well did the syllabus equip you with necessary technical skills to face the industry?	45.71%	34.29%	3.86%	3%
5	How do you take the sequence of the units in the course?	42.86%	32.57%	4.14%	6%
6	Was the depth of the course content adequate in relation to the expected course outcomes?	45.00%	44.29%	3.71%	0%
7	What do you say about the library for using text books?	45.71%	28.57%	3.86%	0.00%
8	What do you think about the lab facilities of the course that you are studying?	54.14%	34.29%	4.71%	0.00%
9	How helpful was the career guidance and counseling provided by faculty members?	51.71%	34.71%	2.86%	0%
10	How effective was the usage of ICT tools and black board for teaching?	51.00%	31.43%	4.71%	2.86%
11	How well the syllabus enabled you to improve your ability to formulate, analyze and solve the problems?	55.32%	36.60%	4.20%	3.00%



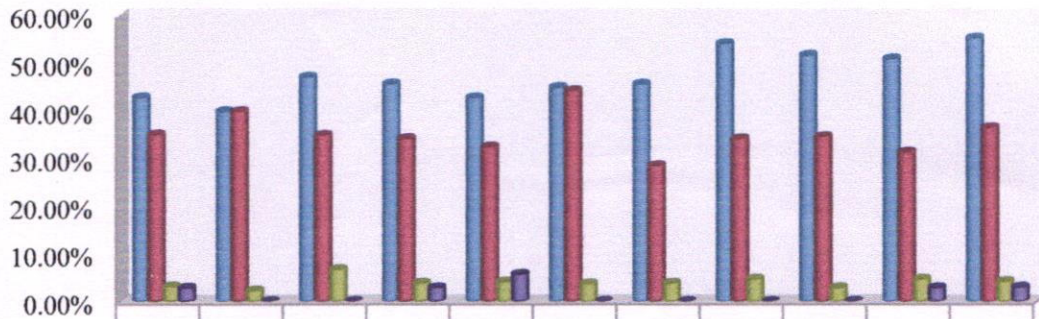

PRINCIPAL
KAILASH WOMEN'S COLLEGE
 Tharamangalam-Nangavalli Main Road
 Periyasoragai P.O., Nangavalli
 SALEM-636 502



KAILASH WOMEN'S COLLEGE

(Affiliated to Periyar University, Salem) (An ISO 9001:2015 Certified Institution) Nangavalli, Salem - 636502

Student Feedback Analysis



	1	2	3	4	5	6	7	8	9	10	11
■ Excellent	42.86	40.00	47.14	45.71	42.86	45.00	45.71	54.14	51.71	51.00	55.32
■ Good	35.14	40%	35.00	34.29	32.57	44.29	28.57	34.29	34.71	31.43	36.60
■ Average	3.14%	2.29%	6.71%	3.86%	4.14%	3.71%	3.86%	4.71%	2.86%	4.71%	4.20%
■ Fair	2.86%	0%	0.00%	3%	6%	0%	0.00%	0.00%	0%	2.86%	3.00%



[Signature]

PRINCIPAL
KAILASH WOMEN'S COLLEGE
 Tharamangalam-Nangavalli Main Road
 Periyasoragai P.O. Nangavalli,
 SALEM-636 502



KAILASH WOMEN'S COLLEGE

(Affiliated to Periyar University, Salem) (An ISO 9001:2015 Certified Institution) Nangavalli, Salem - 636502

FEEDBACK ANALYSIS – STUDENTS

B.Sc Zoology

IQAC collected feedback from students regarding syllabus completion, communication skills, teaching methodology and others in various aspects. The representations of feedback analysis report are as follow

Summary table for Students Feedback					
Sl.No	Particulars	Excellent	Good	Average	Fair
1	Did you find the syllabus easy to follow?	53.38%	43.59%	2.07%	0.97%
2	Was the entire syllabus covered in the class by teacher?	50.62%	46.34%	1.79%	1%
3	Were the units / sections in the syllabus properly sequenced?	48.55%	47.31%	2.34%	1.79%
4	How well did the syllabus equip you with necessary technical skills to face the industry?	64.28%	32.00%	2.07%	2%
5	How do you take the sequence of the units in the course?	50.64%	42.80%	3.60%	3%
6	Was the depth of the course content adequate in relation to the expected course outcomes?	49.79%	48.52%	1.06%	1%
7	What do you say about the library for using text books?	52.33%	41.72%	3.39%	2.54%
8	What do you think about the lab facilities of the course that you are studying?	53.60%	39.19%	4.03%	3.18%
9	How helpful was the career guidance and counseling provided by faculty members?	53.52%	42.90%	2.21%	1%
10	How effective was the usage of ICT tools and black board for teaching?	49.15%	43.01%	4.24%	3.39%
11	How well the syllabus enabled you to improve your ability to formulate, analyze and solve the problems?	53.66%	43.72%	1.79%	0.83%



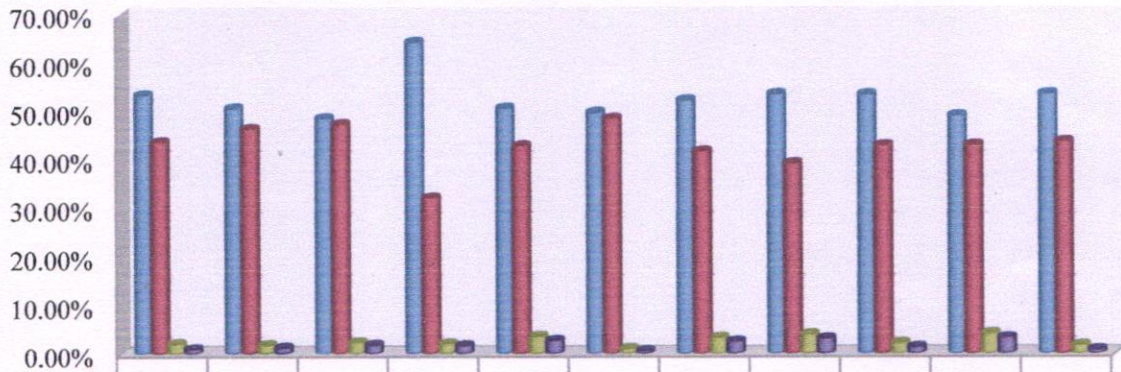

PRINCIPAL
KAILASH WOMEN'S COLLEGE
Tharamangalam-Nangavalli Main Road
Periyasoragai P.O, Nangavalli,
SALEM-636 502



KAILASH WOMEN'S COLLEGE

(Affiliated to Periyar University, Salem) (An ISO 9001:2015 Certified Institution) Nangavalli, Salem - 636502

Student Feedback analysis



	1	2	3	4	5	6	7	8	9	10	11
Did you find the syllabus easy to follow?	53.38%	50.62%	48.55%	64.28%	50.64%	49.79%	52.33%	53.60%	53.52%	49.15%	53.66%
Was the entire syllabus covered in the class by teacher?	43.59%	46.34%	47.31%	32.00%	42.80%	48.52%	41.72%	39.19%	42.90%	43.01%	43.72%
Were the units / sections in the syllabus properly sequenced?	2.07%	1.79%	2.34%	2.07%	3.60%	1.06%	3.39%	4.03%	2.21%	4.24%	1.79%
How well did the syllabus equip you with necessary technical skills to face the industry?	0.97%	1%	1.79%	2%	3%	1%	2.54%	3.18%	1%	3.39%	0.83%
How do you take the sequence of the units in the course?											
Was the depth of the course content adequate in relation to the expected course outcomes?											
What do you say about the library for using text books?											
What do you think about the lab facilities of the course that you are studying?											
How helpful was the career guidance and counseling provided by faculty members?											
How effective was the usage of ICT tools and blackboard for teaching?											
How well the syllabus enabled you to improve your ability to formulate, analyze and solve...											
Excellent	53.38%	50.62%	48.55%	64.28%	50.64%	49.79%	52.33%	53.60%	53.52%	49.15%	53.66%
Good	43.59%	46.34%	47.31%	32.00%	42.80%	48.52%	41.72%	39.19%	42.90%	43.01%	43.72%
Average	2.07%	1.79%	2.34%	2.07%	3.60%	1.06%	3.39%	4.03%	2.21%	4.24%	1.79%
Fair	0.97%	1%	1.79%	2%	3%	1%	2.54%	3.18%	1%	3.39%	0.83%




PRINCIPAL
KAILASH WOMEN'S COLLEGE
 Tharamangalam-Nangavalli Main Road
 Periyasoragai P.O, Nangavalli.
 SALEM-636 502



KAILASH WOMEN'S COLLEGE

(Affiliated to Periyar University, Salem) (An ISO 9001:2015 Certified Institution) Nangavalli, Salem - 636502

Department Of B.Sc Microbiology

Action Taken Report (2021-22)

STUDENTS

Sl. No.	Suggestions	Action taken
1	Pupils require more hands-on experiments.	Chose to devote additional time beyond regular class hours.

TEACHERS

Sl. No.	Suggestions	Action taken
1	Importance assigned to the practical and field work component.	Additional laboratory experiments were assigned to further develop practical skills in the classroom setting.

EMPLOYERS

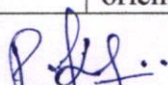
Sl. No.	Suggestions	Action Taken
1	The organization's leadership desires to witness enhanced skill of our students in interview.	The students are provided with guidance on developing interview skills through additional educational programs.

ALUMNI

Sl. No.	Suggestions	Action Taken
1	Increase the frequency and intensity of training programs for career guidance related activities.	The Career and Placement Cell arranged exclusive soft skill and aptitude training sessions, which were specialized and not open to the general public.

PARENTS

Sl. No.	Suggestions	Action taken
1	There was a demand for training programs focused on skill development and job-oriented courses.	Chose to offer vocationally focused training programs.


HOD

HEAD OF THE DEPARTMENT
DEPARTMENT OF MICROBIOLOGY
KAILASH WOMEN'S COLLEGE
NANGAVALLI, SALEM-636-502




Principal

PRINCIPAL
KAILASH WOMEN'S COLLEGE
Tharamangalam-Nangavalli Main Road
Periyasoragai P.O, Nangavalli
SALEM-636 502



KAILASH WOMEN'S COLLEGE

(Affiliated to Periyar University, Salem) (An ISO 9001:2015 Certified Institution) Nangavalli, Salem - 636502

Department Of B.Sc Nutrition and Dietetics

Action Taken Report (2021-22)

STUDENTS

Sl. No.	Suggestions	Action taken
1	Students have called for a vote to select a new secretary and deputy secretary	A vote was organized by the leadership to select a new Secretary and an additional position of join Secretary.

TEACHERS

Sl. No.	Suggestions	Action taken
1	Require a napkin dispensing machine.	A proposal has been presented to the management for introducing a vending machine that dispenses napkins.

EMPLOYERS

Sl. No.	Suggestions	Action Taken
1	Need pre-placement interview trainings.	Emphasis will be placed specifically on pre-placement training.

PARENTS

Sl. No.	Suggestions	Action taken
1	Require accommodation in the form of hostels for students who live far away from the institution.	The organization has chose to introduce dormitory accommodations.

HOD

Head of the Department
Department of Nutrition & Dietetics
Kailash Women's College
Periyasoragai (PO), Nangavalli
Salem-636 502



Principal

PRINCIPAL
KAILASH WOMEN'S COLLEGE
Tharamangalam-Nangavalli Main Road
Periyasoragai P.O, Nangavalli
SALEM-636 502