



KAILASH WOMEN'S COLLEGE

(Affiliated to Periyar University, Salem) (An ISO 9001:2015 Certified Institution) Nangavalli, Salem - 636502

1.4.1 Institution obtains feedback on the syllabus and its transaction at the institution

INTERNAL QUALITY ASSURANCE CELL FEEDBACK ANALYSIS (2019-20)

Our college regularly collects feedback from the students which comprises of syllabus completion, communication skills, teaching methodology and others in various aspects. Feedback is received from students, teachers, employers and alumni during various meetings held in each academic session. Feedback forms are available in our college website so that the students can voice out whenever an issue is raised.

FEEDBACK ANALYSIS – STUDENTS

IQAC collected feedback from students regarding syllabus completion, communication skills, teaching methodology and others in various aspects. The representations of feedback analysis report are as follow

Summary table for Students Feedback (2019-20)

Sl. No.	Particulars	Excellent	Good	Average	Fair
1	Did you find the syllabus easy to follow?	51.72%	45.07%	2.11%	1.08%
2	Entire the syllabus covered in the class by teacher?	51.47%	45.04%	2.29%	1.18%
3	Were the units/ sections in the syllabus properly sequenced?	51.84%	45.44%	1.92%	1%
4	How well did the syllabus equip you with necessary technical skills to face the industry?	51.94%	44.88%	1.95	1.21%
5	How do you take the sequence of the units in the course?	51.59%	44.92%	1.98	1%
6	Was the depth of the course content adequate in relation to the expected course outcomes?	51.87%	45.32%	2.05%	0.74%
7	What do you say about the library for using text books?	51.66%	45.32%	2.11%	1%
8	What do you think about the lab facilities of the course that you are studying?	52.09%	45.26%	2.11%	1%
9	How helpful was the career guidance and counseling provided by faculty members?	52.34%	45.60%	1.49%	1%
10	How effective was the usage of ICT tools and black board for teaching?	52.12%	45.16%	1.61%	2%
11	How well the syllabus enabled you to improve your ability to formulate, analyze and solve the problems?	52.03%	45.10%	1.70%	1.14%



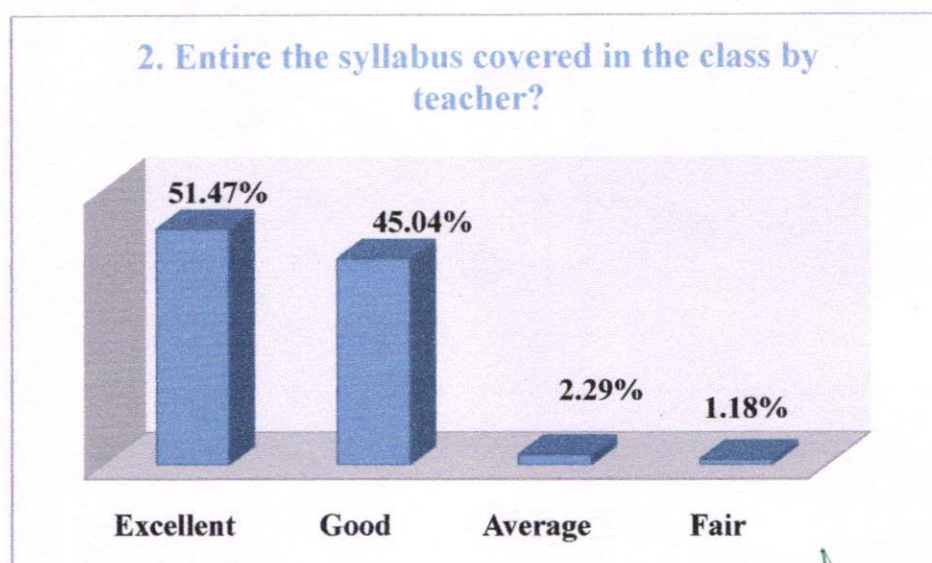
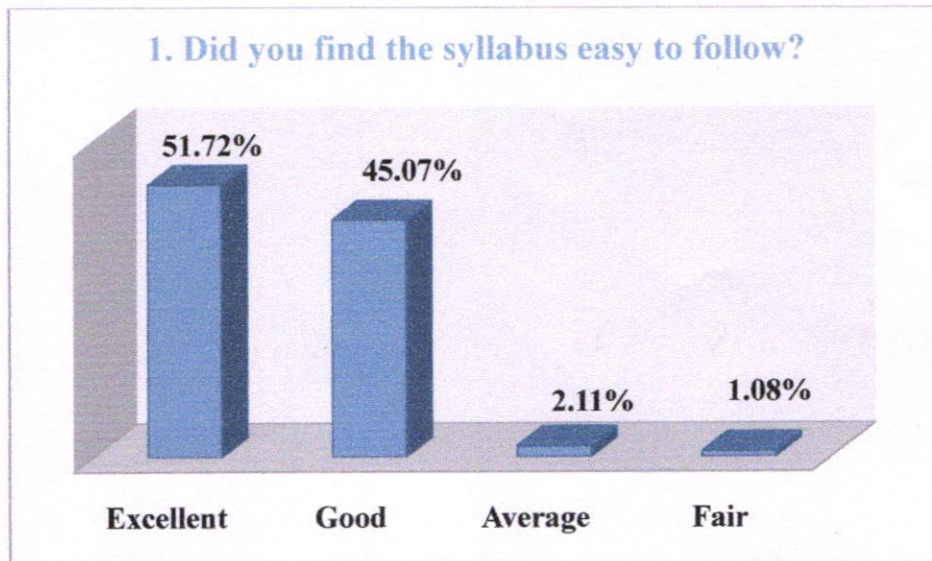
PRINCIPAL
KAILASH WOMEN'S COLLEGE
 Tharamangalam-Nangavalli Main Road
 Periyasoragai P.O, Nangavalli
 SALEM-636 502



KAILASH WOMEN'S COLLEGE

(Affiliated to Periyar University, Salem) (An ISO 9001:2015 Certified Institution) Nangavalli, Salem - 636502

The feedback taken from the students (using the above questions) syllabus completion, communication skills, teaching methodology and others reveal the following facts that are presented by a pictorial representation.



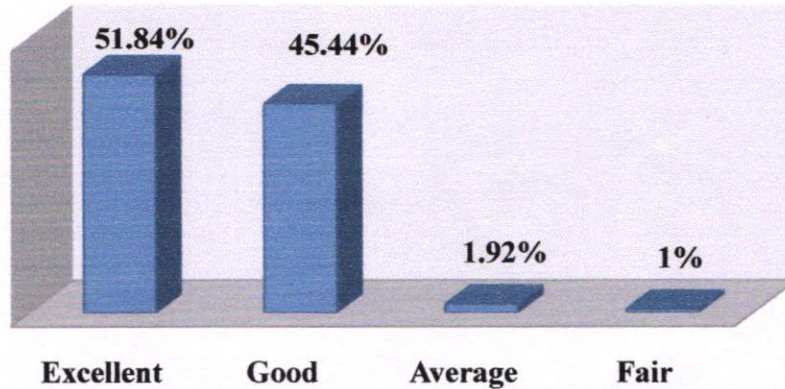
[Signature]
PRINCIPAL
KAILASH WOMEN'S COLLEGE
Tharamangalam-Nangavalli Main Road
Periyasoragai P.O. Nangavalli
SALEM-636 502



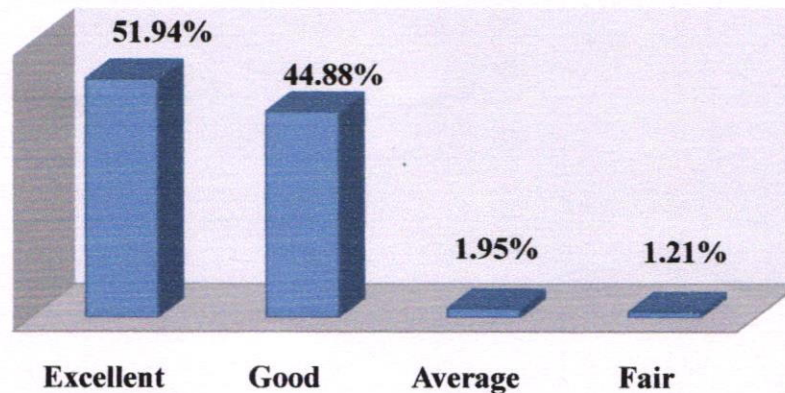
KAILASH WOMEN'S COLLEGE

(Affiliated to Periyar University, Salem) (An ISO 9001:2015 Certified Institution) Nangavalli, Salem - 636502

3. Were the units/sections in the syllabus properly sequenced?



4. How well did the syllabus equip you with necessary technical skills to face the industry?



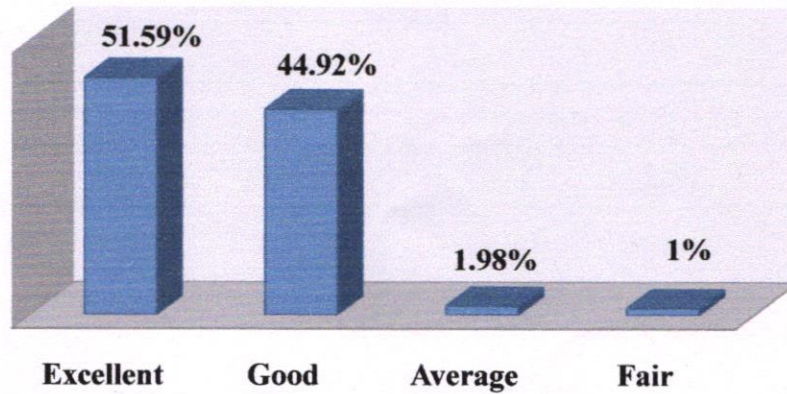
[Signature]
PRINCIPAL
KAILASH WOMEN'S COLLEGE
Tharamangalam-Nangavalli Main Road
Periyasoragai P.O, Nangavalli,
SALEM-636 502



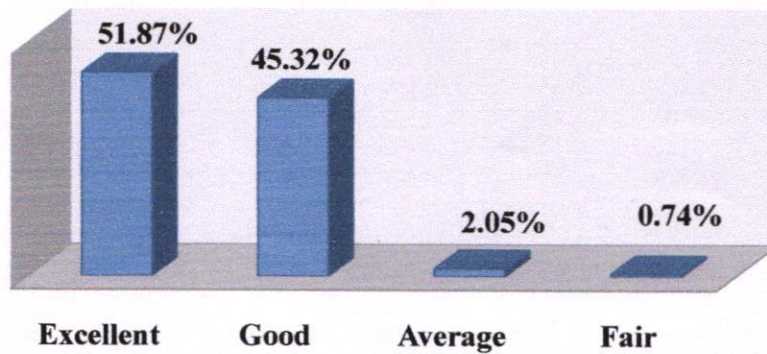
KAILASH WOMEN'S COLLEGE


(Affiliated to Periyar University, Salem) (An ISO 9001:2015 Certified Institution) Nangavalli, Salem - 636502

5. How do you take the sequence of the units in the course?



6. Was the depth of the course content adequate in relation to the expected course outcomes?



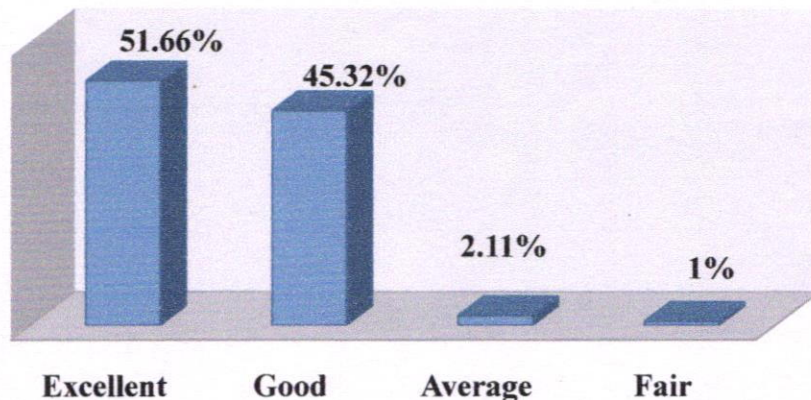

PRINCIPAL
KAILASH WOMEN'S COLLEGE
Tharamangalam-Nangavalli Main Road
Periyasoragai P.O, Nangavalli,
SALEM-636 502



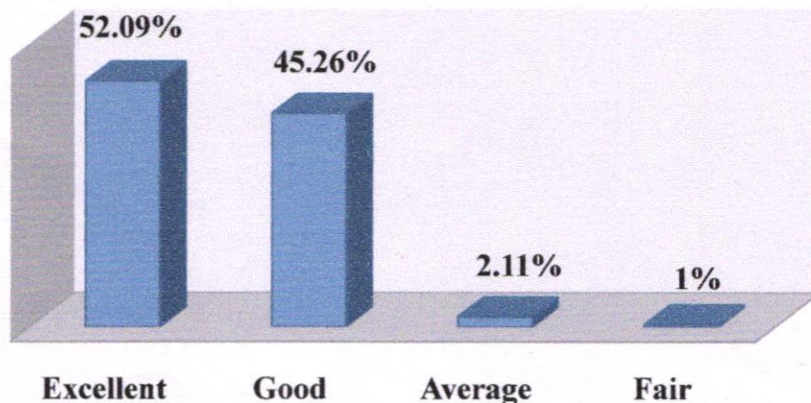
KAILASH WOMEN'S COLLEGE

(Affiliated to Periyar University, Salem) (An ISO 9001:2015 Certified Institution) Nangavalli, Salem - 636502

7. What do you say about the library for using text books?



8. What do you think about the lab facilities of the course that you are studying?



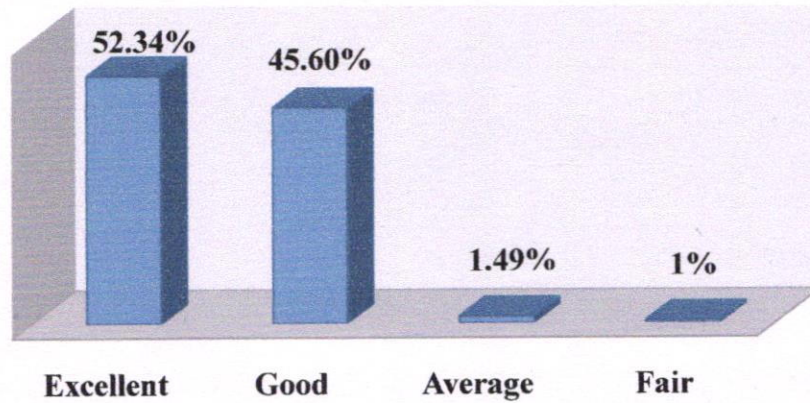
PRINCIPAL
KAILASH WOMEN'S COLLEGE
Tharamangalam-Nangavalli Main Road
Periyasoragai P.O., Nangavalli,
SALEM-636 502



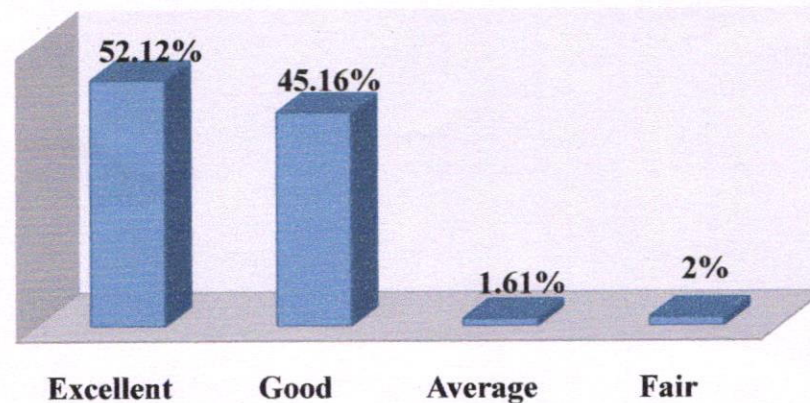
KAILASH WOMEN'S COLLEGE

(Affiliated to Periyar University, Salem) (An ISO 9001:2015 Certified Institution) Nangavalli, Salem - 636502

9. How helpful was the career guidance and counseling provided by faculty members?



10. How effective was the usage of ICT tools and black board for teaching?



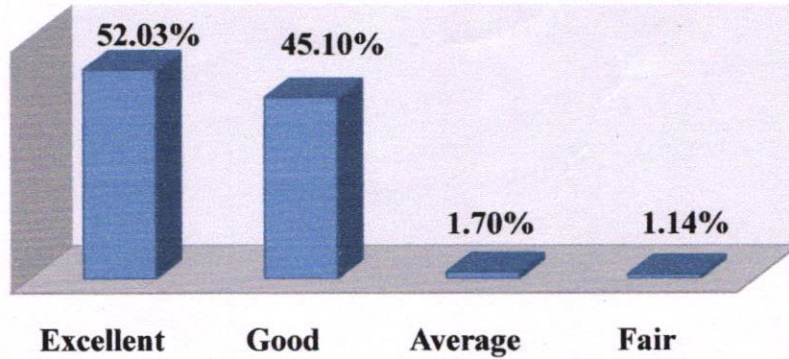

PRINCIPAL
KAILASH WOMEN'S COLLEGE
Tharamangalam-Nangavalli Main Road
Periyasoragai P.O, Nangavalli,
SALEM-636 502



KAILASH WOMEN'S COLLEGE

(Affiliated to Periyar University, Salem) (An ISO 9001:2015 Certified Institution) Nangavalli, Salem - 636502

11. How well the syllabus enabled you to improve your ability to formulate, analyze and solve the problems?



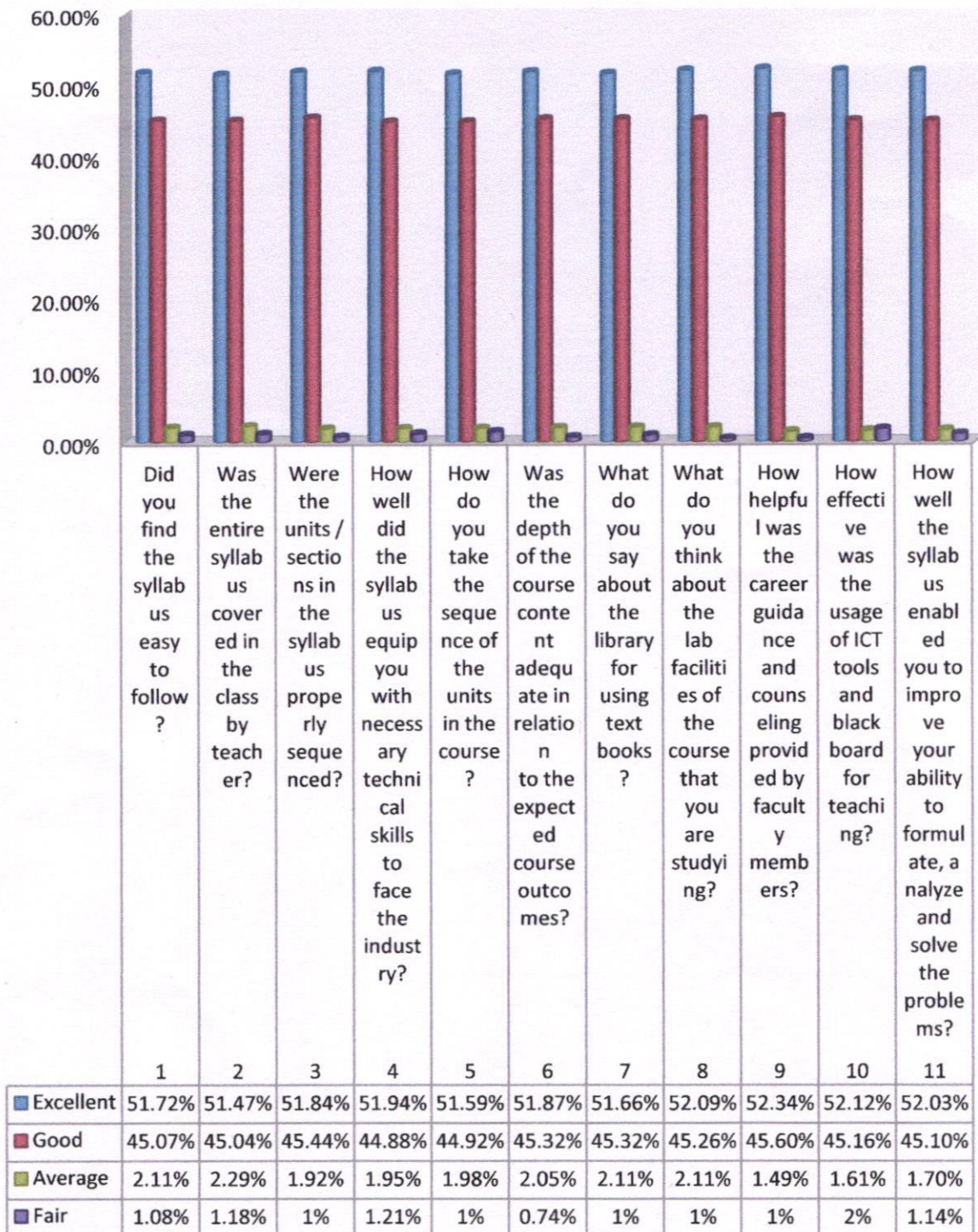

PRINCIPAL
KAILASH WOMEN'S COLLEGE
Tharamangalam-Nangavalli Main Road
Periyasoragai P.O, Nangavalli,
SALEM-636 502



KAILASH WOMEN'S COLLEGE

(Affiliated to Periyar University, Salem) (An ISO 9001:2015 Certified Institution) Nangavalli, Salem - 636502

Student Feedback Analysis (2019-20)




PRINCIPAL
KAILASH WOMEN'S COLLEGE
 Tharamangalam-Nangavalli Main Road
 Periyasoragai P.O., Nangavalli,
 SALEM-636 502



KAILASH WOMEN'S COLLEGE

(Affiliated to Periyar University, Salem) (An ISO 9001:2015 Certified Institution) Nangavalli, Salem - 636502

1.4.1 Institution obtains feedback on the syllabus and its transaction at the institution

INTERNAL QUALITY ASSURANCE CELL FEEDBACK ANALYSIS (2019-20)

Our college regularly collects feedback from the students which comprises of syllabus completion, communication skills, teaching methodology and others in various aspects. Feedback is received from students, teachers, employers and alumni during various meetings held in each academic session. Feedback forms are available in our college website so that the students can voice out whenever an issue is raised.

FEEDBACK ANALYSIS – TEACHERS

IQAC collected feedback from teachers regarding college infrastructure learning and different other aspects. The representations of feedback analysis are as follows.

Summary table for teachers feedback (2019-20)

Sl. No.	Particulars	Excellent	Good	Average	Fair
1	Teacher Student rapport	50.68%	44.52%	3.42%	1.36%
2	Inclusion/Incorporation of latest advancement in the subject.	52.05%	45.20%	2.05%	0.68%
3	Weightage given to practical and field work component.	54.10%	42.46%	2.05%	1.36%
4	Depth of the course content and outcomes.	52.73%	43.83%	0.68	0.68%
5	Student academic response.	51.36%	41.78%	5.47%	2.05%
6	Availability of library & e-resources.	50%	45.89%	2.73%	1.36%
7	Motivating and assisting students for research projects.	52.05%	39.72%	2.73%	2.05%
8	Motivation and Financial assistance to publish research papers or attend conference.	53.42%	41.76%	4.10%	0.68%
9	Weightage given to employability.	54.79%	42.46%	1.36%	1.36%
10	Rate the job satisfaction.	50.00%	39.72%	7.53%	2.05%



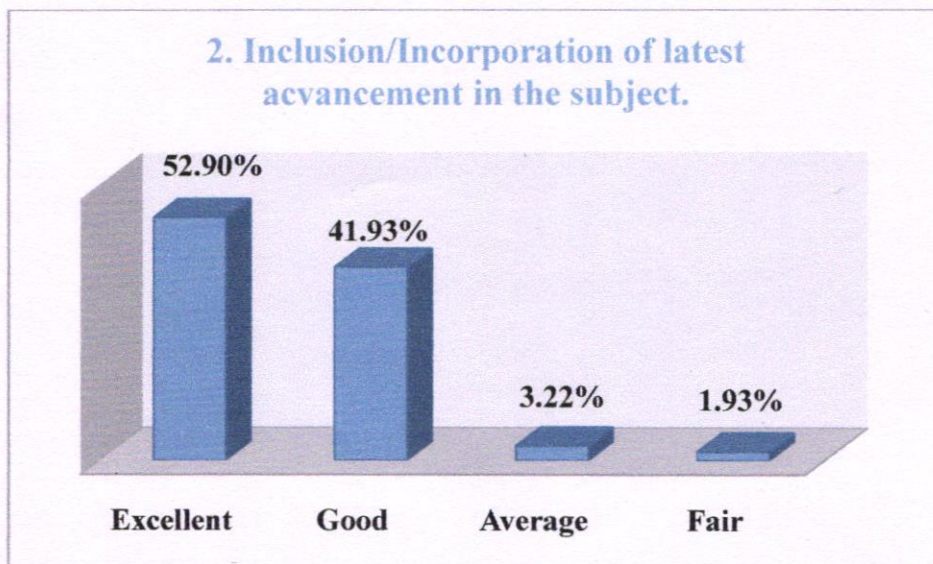
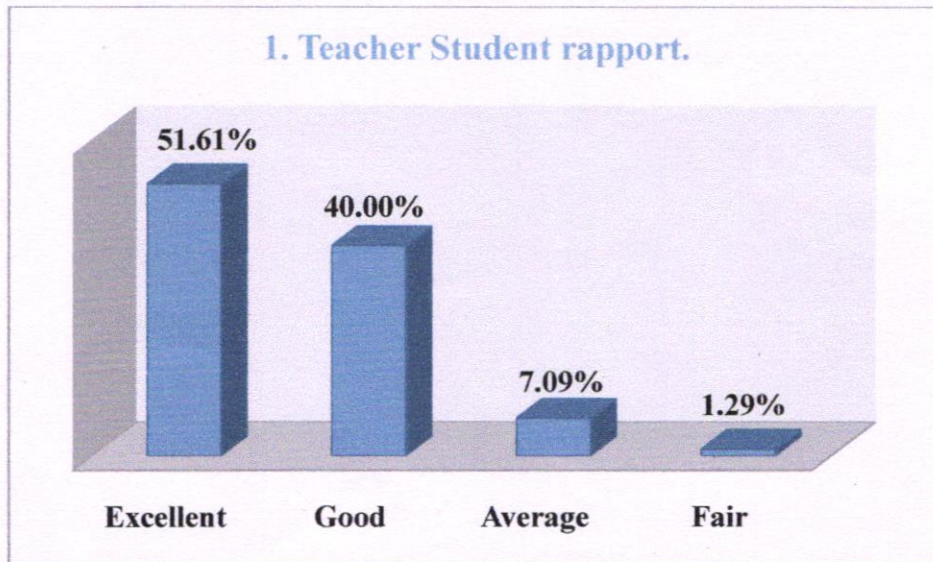
PRINCIPAL
KAILASH WOMEN'S COLLEGE
Tharamangalam-Nangavalli Main Road
Periyasoragai P.O, Nangavalli
SALEM-636 502




KAILASH WOMEN'S COLLEGE

(Affiliated to Periyar University, Salem) (An ISO 9001:2015 Certified Institution) Nangavalli, Salem - 636502

The feedback taken from teachers (using the above questions) about the present curriculum is reveals the following facts that should be in a pictorial representations.



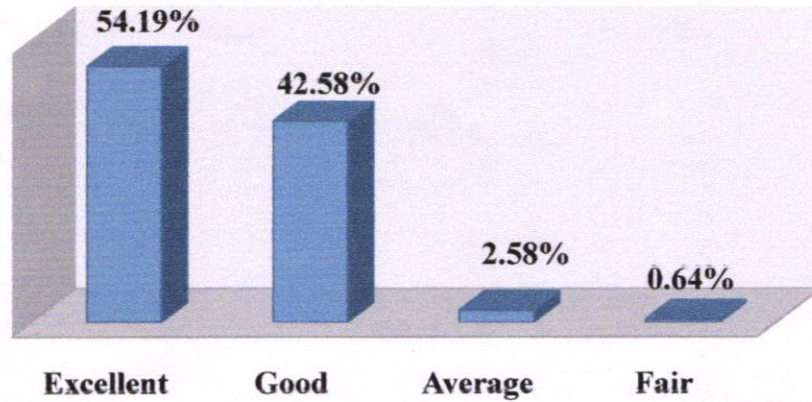

PRINCIPAL
KAILASH WOMEN'S COLLEGE
Tharamangalam-Nangavalli Main Road,
Periyasoragai P.O, Nangavalli
SALEM-636 502



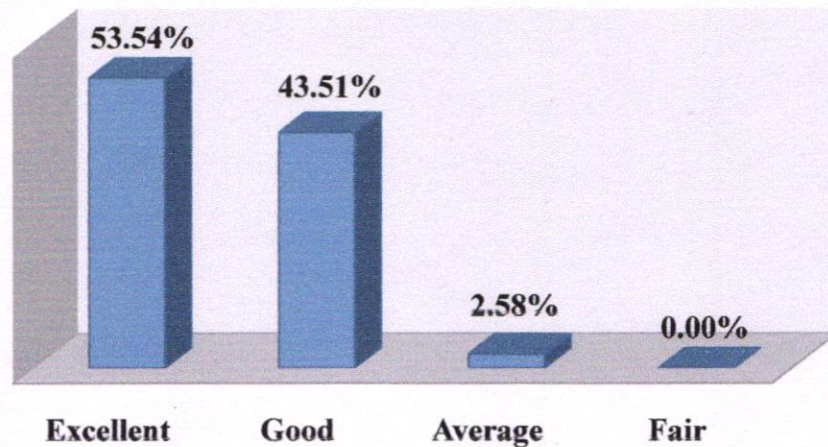
KAILASH WOMEN'S COLLEGE


(Affiliated to Periyar University, Salem) (An ISO 9001:2015 Certified Institution) Nangavalli, Salem - 636502

3. Weightage given to practical and field work component.



4. Depth of the course content and outcomes.



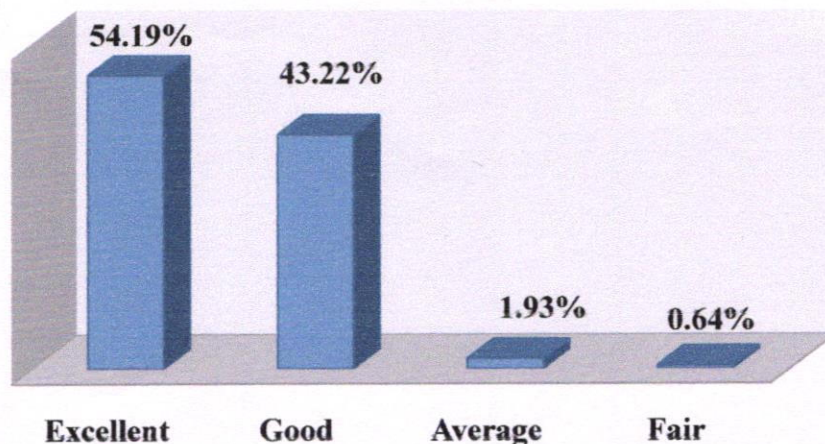

PRINCIPAL
KAILASH WOMEN'S COLLEGE
Tharamangalam-Nangavalli Main Road
Periyasoragai P.O, Nangavalli,
SALEM-636 502



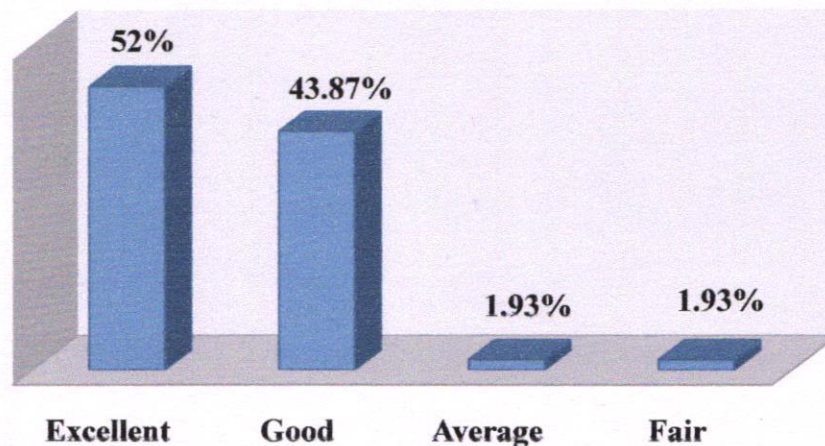
KAILASH WOMEN'S COLLEGE

(Affiliated to Periyar University, Salem) (An ISO 9001:2015 Certified Institution) Nangavalli, Salem - 636502

5. Students academic response.



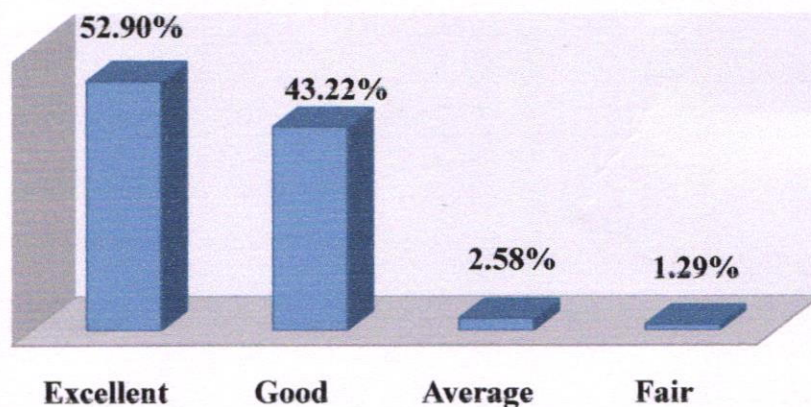
6. Availability of library & e-resources.



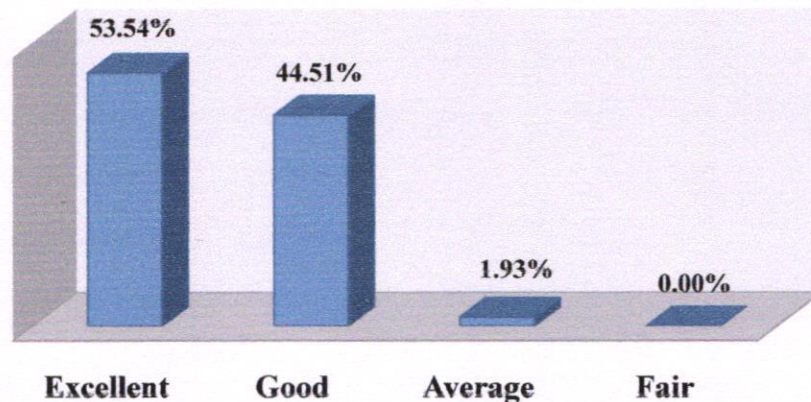

PRINCIPAL
KAILASH WOMEN'S COLLEGE
Tharamangalam-Nangavalli Main Road
Periyasoragai P.O, Nangavalli,
SALEM-636 502



7. Motivating and assisting students for research projects.



8. Motivation and Financial assistance to publish research papers or attend conference.



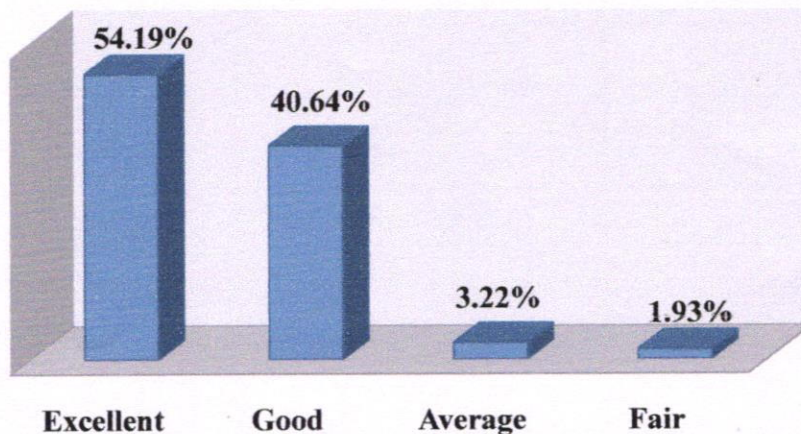
PRINCIPAL
KAILASH WOMEN'S COLLEGE
Tharamangalam-Nangavalli Main Road
Periyasoragai P.O, Nangavalli,
SALEM-636 502



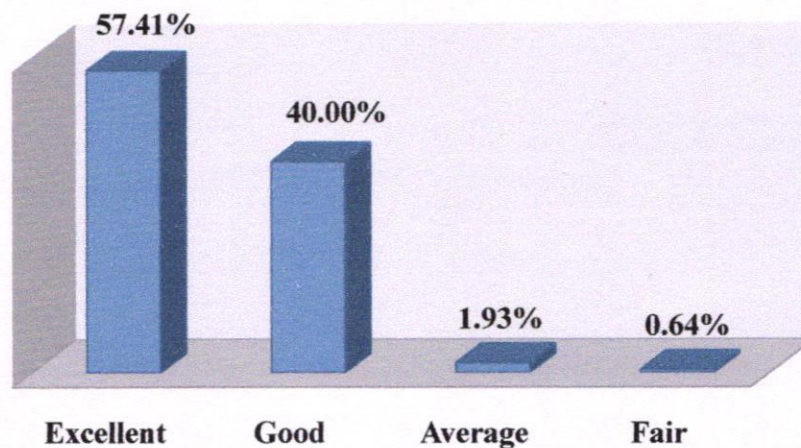
KAILASH WOMEN'S COLLEGE

(Affiliated to Periyar University, Salem) (An ISO 9001:2015 Certified Institution) Nangavalli, Salem - 636502

9. Weightage given to employability.



10. Rate the job satisfaction.



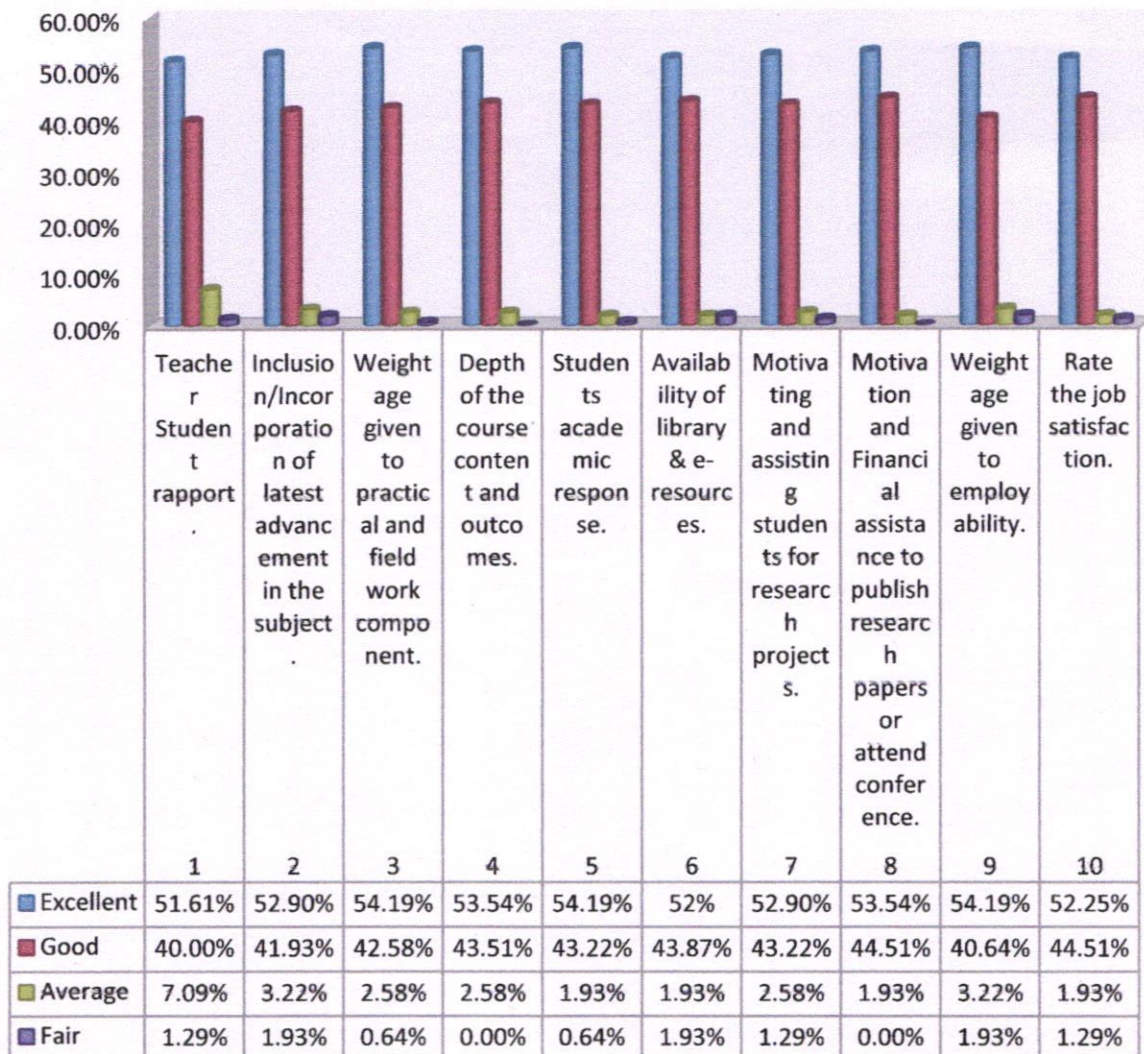
PRINCIPAL
KAILASH WOMEN'S COLLEGE
Tharamangalam-Nangavalli Main Road
Periyasoragai P.O, Nangavalli,
SALEM-636 502



KAILASH WOMEN'S COLLEGE

(Affiliated to Periyar University, Salem) (An ISO 9001:2015 Certified Institution) Nangavalli, Salem - 636502

Teachers Feedback Analysis (2019-20)



[Signature]

PRINCIPAL

KAILASH WOMEN'S COLLEGE
Tharamangalam-Nangavalli Main Road
Periyasoragai P.O. Nangavalli,
SALEM-636 502



KAILASH WOMEN'S COLLEGE

(Affiliated to Periyar University, Salem) (An ISO 9001:2015 Certified Institution) Nangavalli, Salem - 636502

1.4.1 Institution obtains feedback on the syllabus and its transaction at the institution

INTERNAL QUALITY ASSURANCE CELL FEEDBACK ANALYSIS (2019-20)

Our college regularly collects feedback from the students which comprises of syllabus completion, communication skills, teaching methodology and others in various aspects. Feedback is received from students, teachers, employers and alumni during various meetings held in each academic session. Feedback forms are available in our college website so that the students can voice out whenever an issue is raised.

FEEDBACK ANALYSIS – EMPLOYERS

IQAC collected feedback from the Employer on skill training. The representations of feedback analysis are as follows.

Summary table for employer feedback (2019-20)

Sl. No.	Particulars	Excellent	Good	Average	Fair
1	Syllabus is suitable for employability.	53.94%	39.41%	4.76%	3.88%
2	Syllabus is need based and as per current trends in market.	47.05%	35.29%	7.64%	0.00%
3	Syllabus matches with the demands of the job market.	41.17%	37.41%	4.64%	11.76%
4	Syllabus takes care of knowledge and skills of the students.	47.05%	39.41%	6.64%	2.88%
5	Syllabus is good in balance between theory and application.	53.94%	43.52%	5.76%	1.76%
6	Ethical and professional skills development through curricular.	58.82%	33.52%	3.64%	0.00%
7	Syllabus bridges the gap between industry and academics.	41.17%	38.29%	4.76%	0.76%
8	Fulfills the communication skills required by industry.	41.17%	39.41%	7.64%	0.00%
9	Aptitude and problem analysis skills.	47.05%	43.52%	3.52%	1.88%
10	Scope for integration/training research.	53.94%	45.29%	5.88%	0.00%



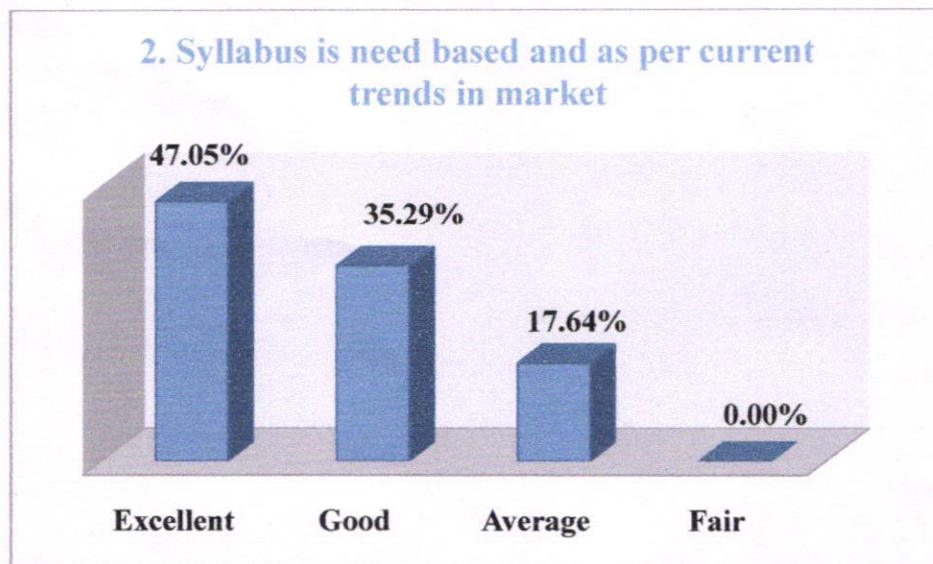
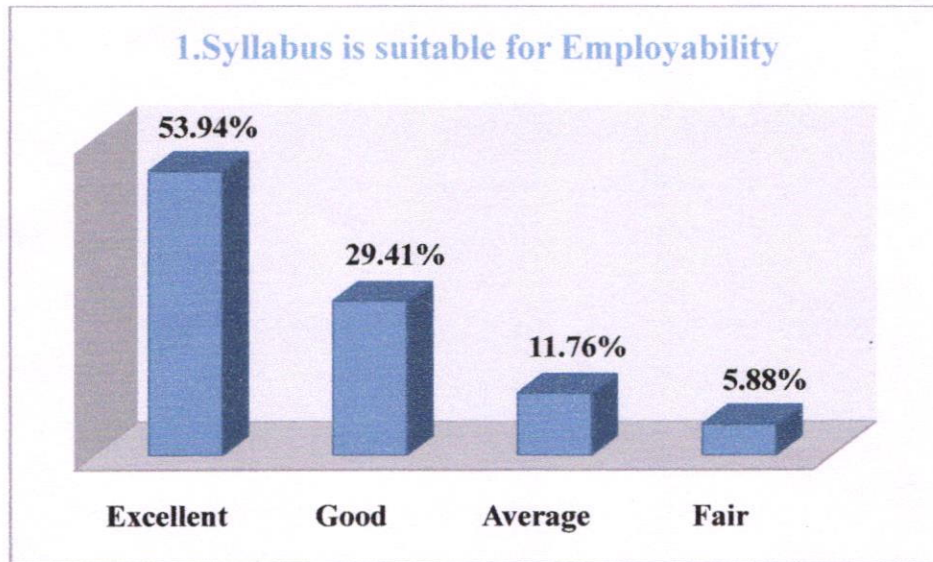

PRINCIPAL
KAILASH WOMEN'S COLLEGE
 Tharamangalam-Nangavalli Main Road
 Periyasoragai P.O, Nangavalli
 SALEM-636 502



KAILASH WOMEN'S COLLEGE

(Affiliated to Periyar University, Salem) (An ISO 9001:2015 Certified Institution) Nangavalli, Salem - 636502

The feedback taken from employers (using the above questions) about the present curriculum is reveals the following facts that should be in a pictorial representations.



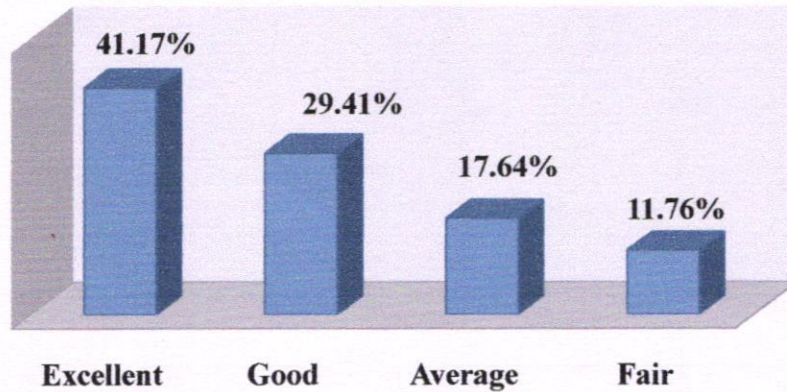

PRINCIPAL
KAILASH WOMEN'S COLLEGE
Tharamangalam-Nangavalli Main Road
Periyasoragai P.O. Nangavalli
SALEM-636 502



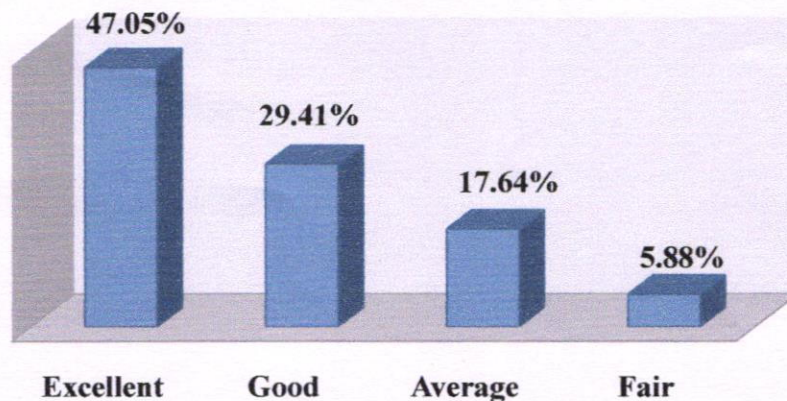
KAILASH WOMEN'S COLLEGE


(Affiliated to Periyar University, Salem) (An ISO 9001:2015 Certified Institution) Nangavalli, Salem - 636502

3. Syllabus matches with the demands of the job market



4. Syllabus takes care of knowledge and skills of the students



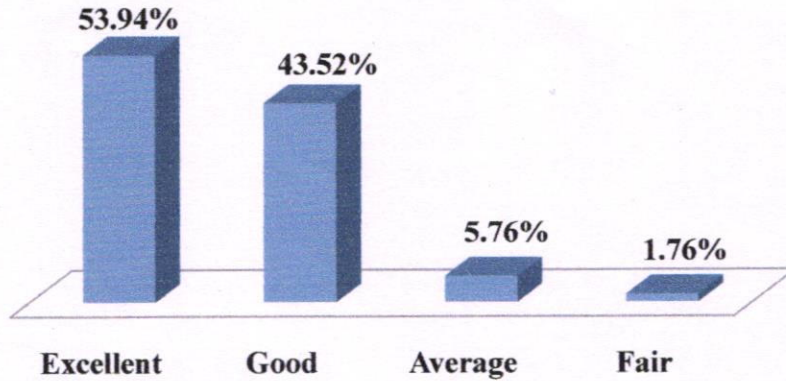

PRINCIPAL
KAILASH WOMEN'S COLLEGE
Tharamangalam-Nangavalli Main Road
Periyasoragai P.O. Nangavalli
SALEM-636 502



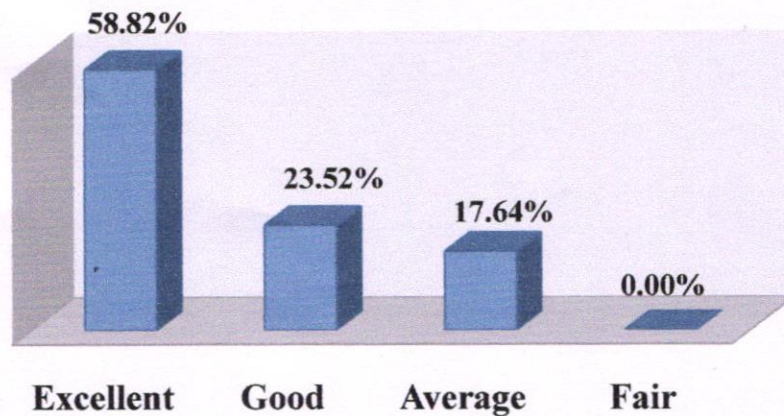
KAILASH WOMEN'S COLLEGE

(Affiliated to Periyar University, Salem) (An ISO 9001:2015 Certified Institution) Nangavalli, Salem - 636502

5. Syllabus is good in balance between theory and application.



6. Ethical and professional skills Development through curricular



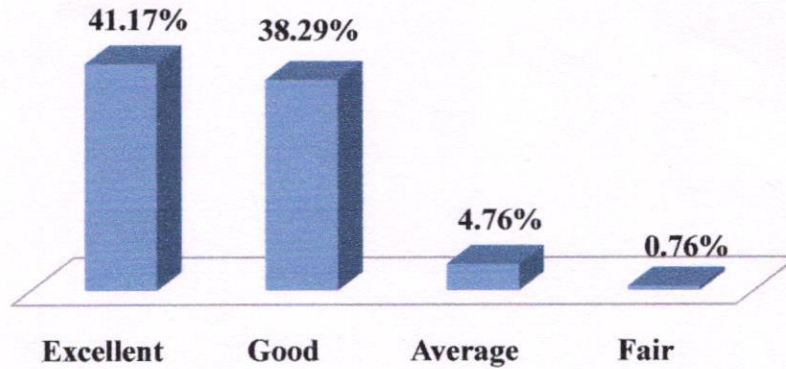
[Signature]
PRINCIPAL
KAILASH WOMEN'S COLLEGE
Tharamangalam-Nangavalli Main Road
Periyasoragai P.O. Nangavalli
SALEM-636 502



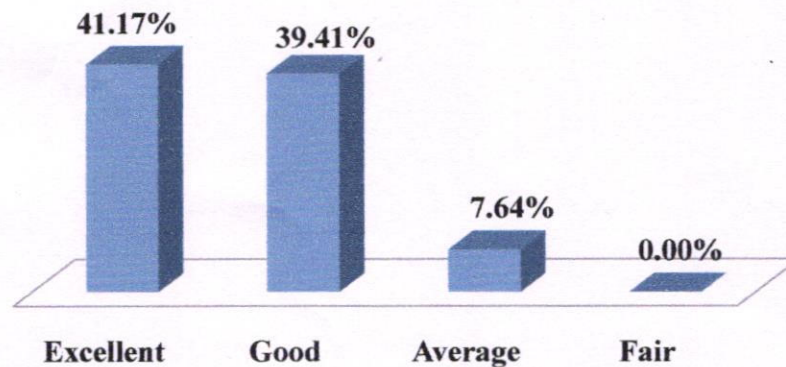
KAILASH WOMEN'S COLLEGE


(Affiliated to Periyar University, Salem) (An ISO 9001:2015 Certified Institution) Nangavalli, Salem - 636502

7. Syllabus bridges the gap between industry and Academics



8. Fulfills of Communication Skills required by industry



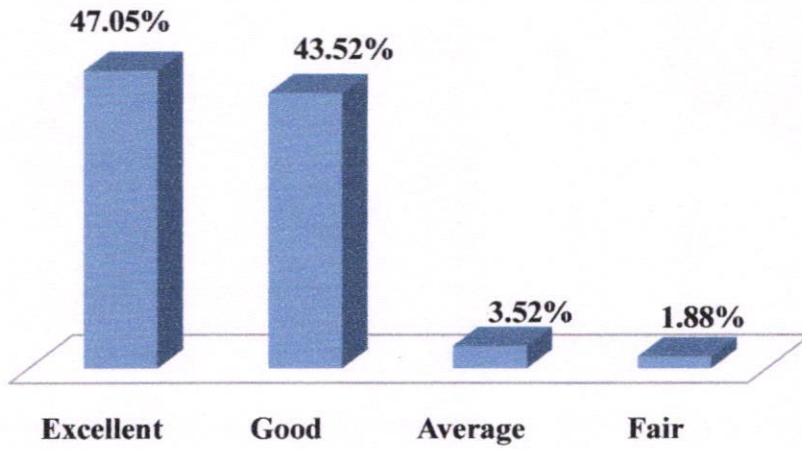

PRINCIPAL
KAILASH WOMEN'S COLLEGE
Tharamangalam-Nangavalli Main Road
Periyasoragai P.O. Nangavalli
SALEM-636 502



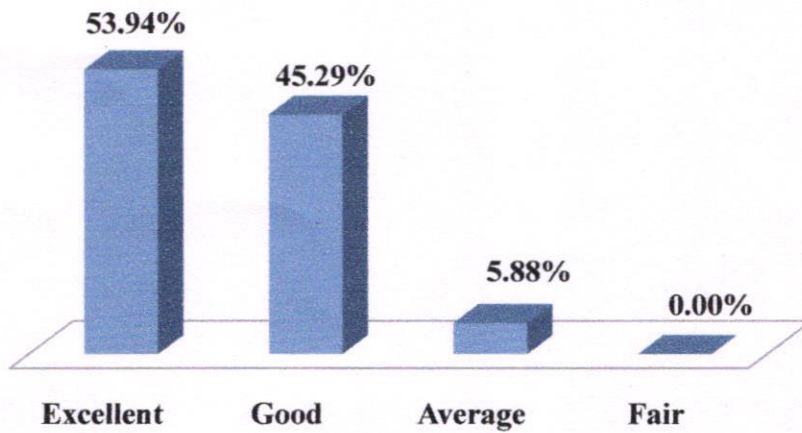
KAILASH WOMEN'S COLLEGE


(Affiliated to Periyar University, Salem) (An ISO 9001:2015 Certified Institution) Nangavalli, Salem - 636502

9. Aptitude and problem Analysis Skills



10. Scope for Integration/ training research



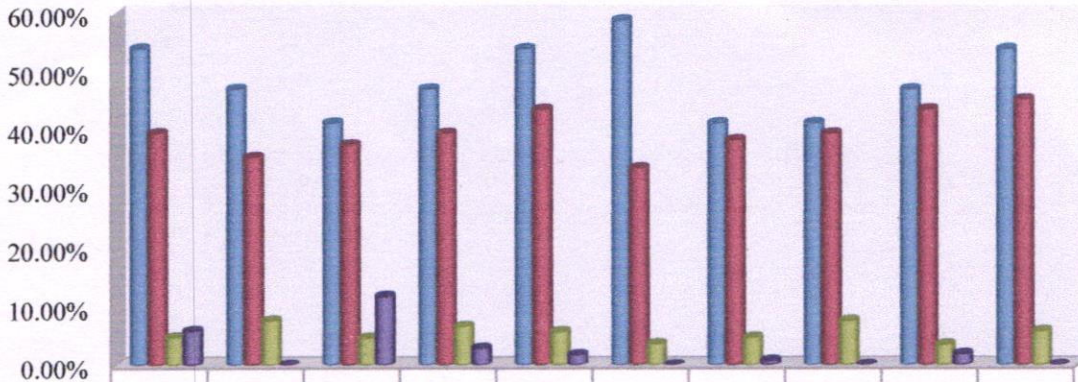

PRINCIPAL
KAILASH WOMEN'S COLLEGE
Tharamangalam-Nangavalli Main Roac
Periyasoragai P.O. Nangavalli
SALEM-636 502



KAILASH WOMEN'S COLLEGE

(Affiliated to Periyar University, Salem) (An ISO 9001:2015 Certified Institution) Nangavalli, Salem - 636502

Employers Feedback Form (2019-20)



	1	2	3	4	5	6	7	8	9	10
■ Excellent	53.94%	47.05%	41.17%	47.05%	53.94%	58.82%	41.17%	41.17%	47.05%	53.94%
■ Good	39.41%	35.29%	37.41%	39.41%	43.52%	33.52%	38.29%	39.41%	43.52%	45.29%
■ Average	4.76%	7.64%	4.64%	6.64%	5.76%	3.64%	4.76%	7.64%	3.52%	5.88%
■ Fair	5.88%	0.00%	11.76%	2.88%	1.76%	0.00%	0.76%	0.00%	1.88%	0.00%



[Signature]
PRINCIPAL
KAILASH WOMEN'S COLLEGE
 Tharamangalam-Nangavalli Main Road
 Periyasoragai P.O., Nangavalli
 SALEM-636 502



KAILASH WOMEN'S COLLEGE

(Affiliated to Periyar University, Salem) (An ISO 9001:2015 Certified Institution) Nangavalli, Salem - 636502

1.4.1 Institution obtains feedback on the syllabus and its transaction at the institution

INTERNAL QUALITY ASSURANCE CELL FEEDBACK ANALYSIS (2019-20)

Our college regularly collects feedback from the students which comprises of syllabus completion, communication skills, teaching methodology and others in various aspects. Feedback is received from students, teachers, employers and alumni during various meetings held in each academic session. Feedback forms are available in our college website so that the students can voice out whenever an issue is raised.

FEEDBACK ANALYSIS – ALUMNI

Feedback was collected IQAC from Alumni regarding the teachers college infrastructure, and different other aspects. The representations of feedback analysis report are as follows.

Summary table for alumni feedback (2019-20)

Sl. No.	Particulars	Excellent	Good	Average	Fair
1	How do you feel being an alumni KWC	52.92%	39.82%	4.60%	2.65%
2	Relevant of course content	47.07%	41.59%	7.07%	4.24%
3	Syllabus matches with the demands of the job market.	52.21%	42.83%	3.81%	1.76%
4	Overall academic atmosphere in the syllabus	51.68%	44.07%	3.53%	2.47%
5	Faculty motivation during course study	48.49%	40.88%	6.19%	4.42%
6	Library facility	49.38%	43.53%	4.12%	2.65%
7	Training and placement	53.98%	44.07%	1.94%	0%
8	Availability of library & e-resources	46.90%	43.89%	4.95%	4.24%
9	Campus environment	47.61%	43.63%	5.30%	3.71%
10	Canteen facility	51.85%	43.18%	3.18%	1.76%
11	Transport facility	52.21%	42.83%	3.18%	1.76%
12	Ability of curriculum of foster entrepreneurship	53.98%	44.07%	1.94%	0%




PRINCIPAL
KAILASH WOMEN'S COLLEGE
Tharamangalam-Nangavalli Main Road
Periyasoragai P.O, Nangavalli
SALEM-636 502

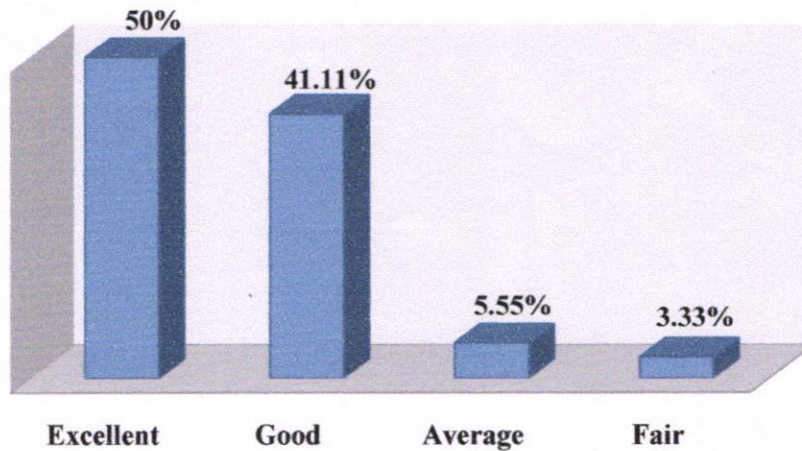


KAILASH WOMEN'S COLLEGE

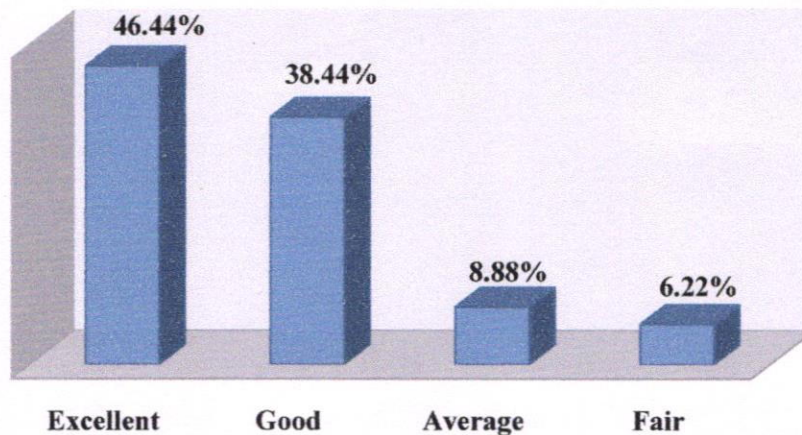
(Affiliated to Periyar University, Salem) (An ISO 9001:2015 Certified Institution) Nangavalli, Salem - 636502


The feedback taken from alumni (using the above questions) about the present curriculum reveals the following facts that should be in a pictorial representation.

1. How do you feel being an alumni of KWC



2. Relevance of course content.



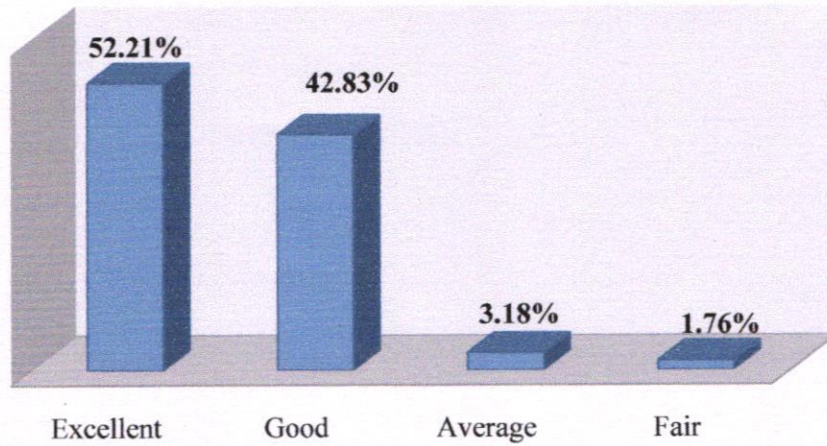

PRINCIPAL
KAILASH WOMEN'S COLLEGE
Tharamangalam-Nangavalli, Main Road
Periyasoragai P.O., Nangavalli
SALEM-636 502



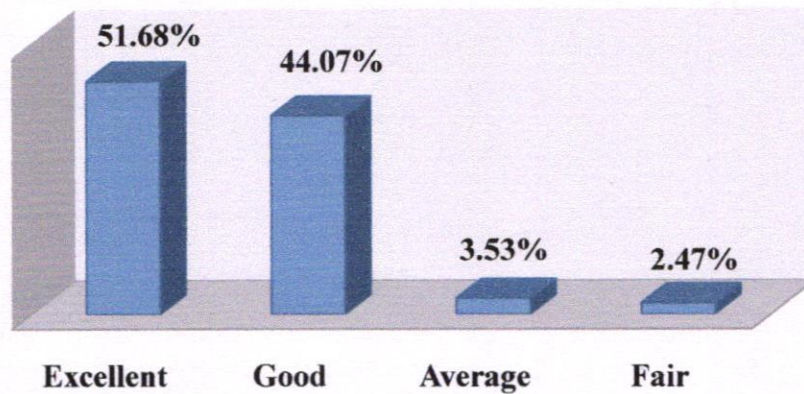
KAILASH WOMEN'S COLLEGE


(Affiliated to Periyar University, Salem) (An ISO 9001:2015 Certified Institution) Nangavalli, Salem - 636502

3. Career orientation in the syllabus



4. Overall academic atmosphere in the syllabus



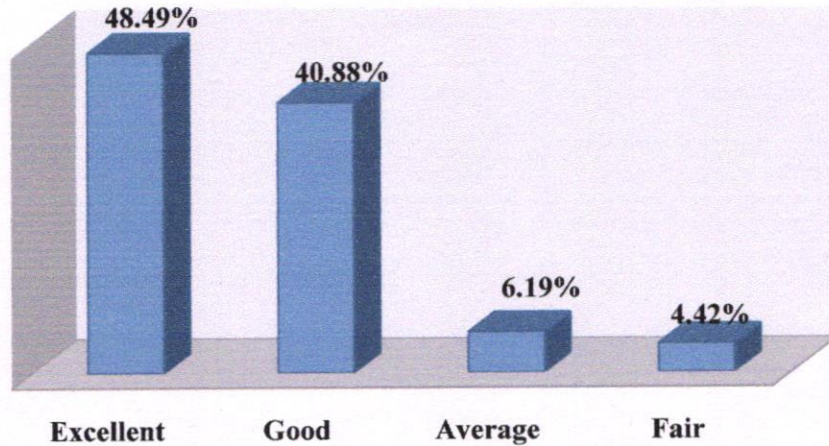

PRINCIPAL
KAILASH WOMEN'S COLLEGE
Tharamangalam-Nangavalli Main Roac
Periyasoragai P.O, Nangavalli,
SALEM-636 502



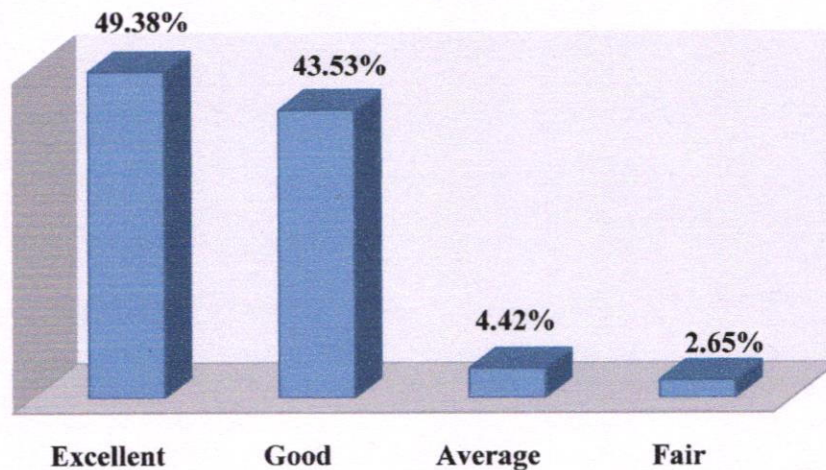
KAILASH WOMEN'S COLLEGE

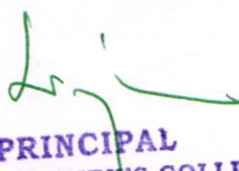
(Affiliated to Periyar University, Salem) (An ISO 9001:2015 Certified Institution) Nangavalli, Salem - 636502

5. Faculty motivation during course study



6. Library facility



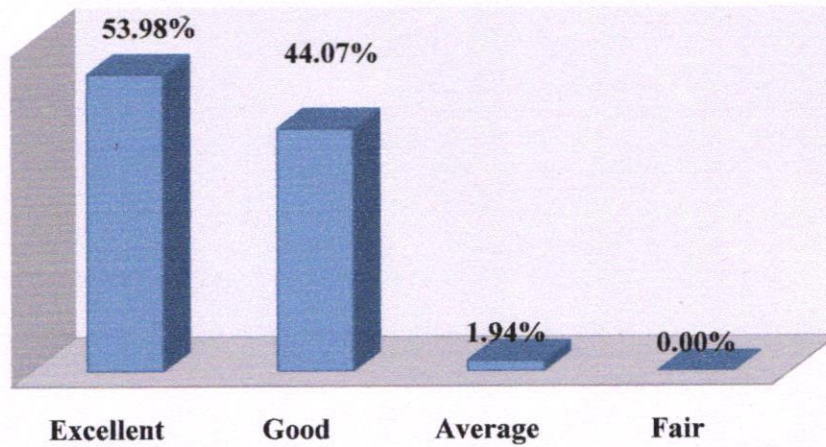

PRINCIPAL
KAILASH WOMEN'S COLLEGE
Tharamangalam-Nangavalli Main Road
Periyasoragai P.O. Nangavalli
SALEM-636 502



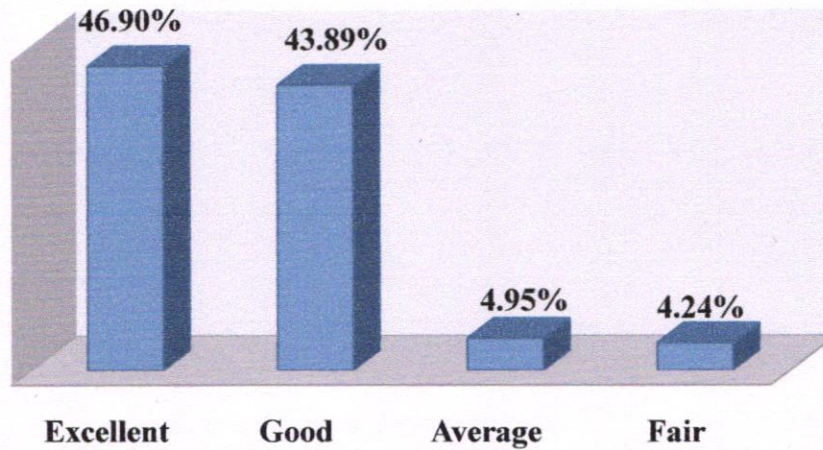
KAILASH WOMEN'S COLLEGE

(Affiliated to Periyar University, Salem) (An ISO 9001:2015 Certified Institution) Nangavalli, Salem - 636502

7. Training and Placement



8. Availability of library & e- resources.

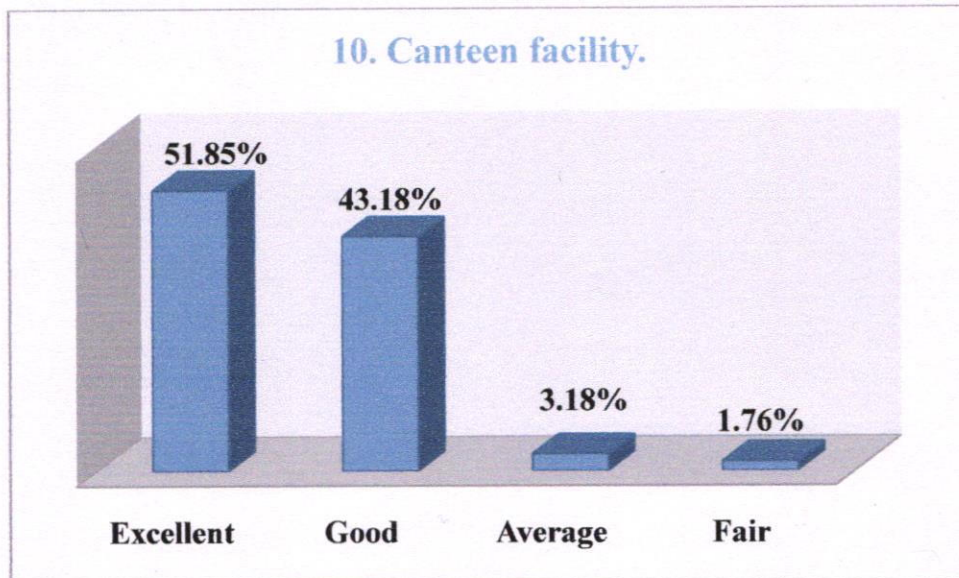
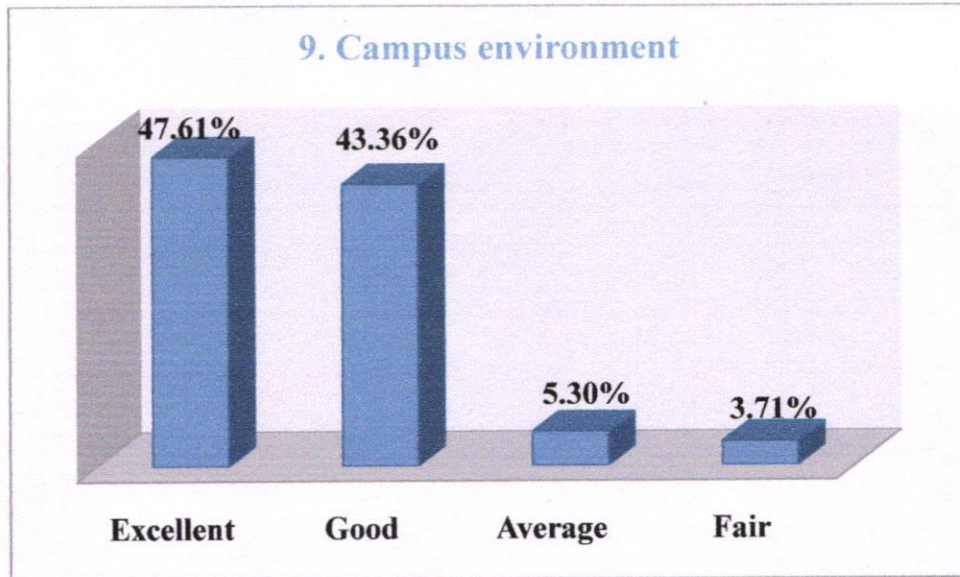



[Signature]
PRINCIPAL
KAILASH WOMEN'S COLLEGE
Tharamangalam-Nangavalli Main Road
Periyasoragai P.O, Nangavalli
SALEM-636 502



KAILASH WOMEN'S COLLEGE

(Affiliated to Periyar University, Salem) (An ISO 9001:2015 Certified Institution) Nangavalli, Salem - 636502

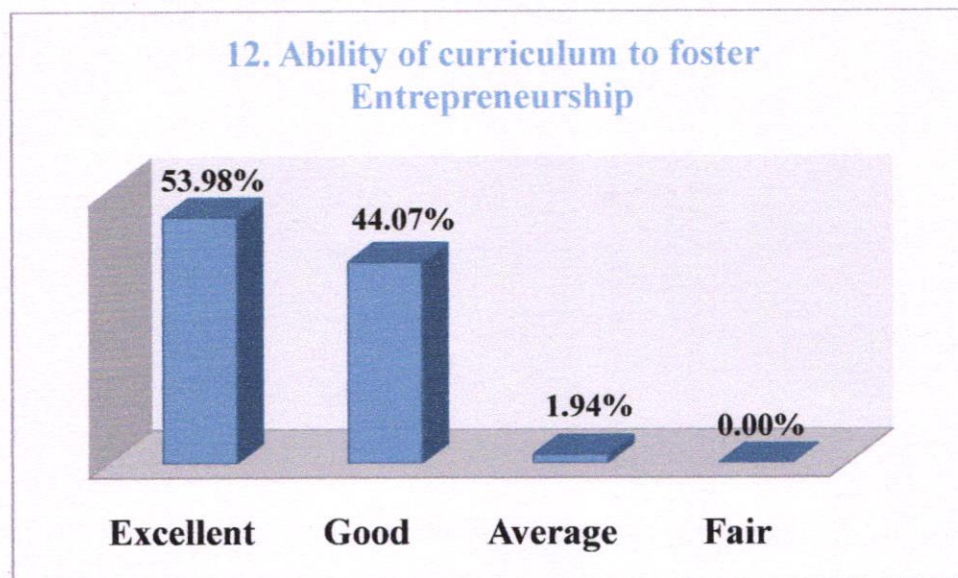
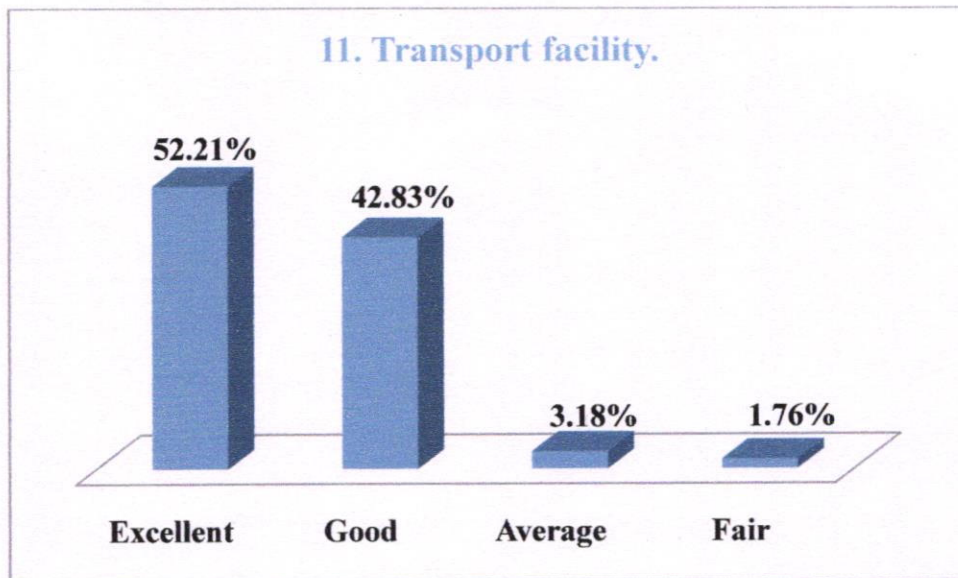




PRINCIPAL
KAILASH WOMEN'S COLLEGE
Tharamangalam-Nangavalli Main Road
Periyasoragai P.O., Nangavalli,
SALEM-636 502



KAILASH WOMEN'S COLLEGE

(Affiliated to Periyar University, Salem) (An ISO 9001:2015 Certified Institution) Nangavalli, Salem - 636502



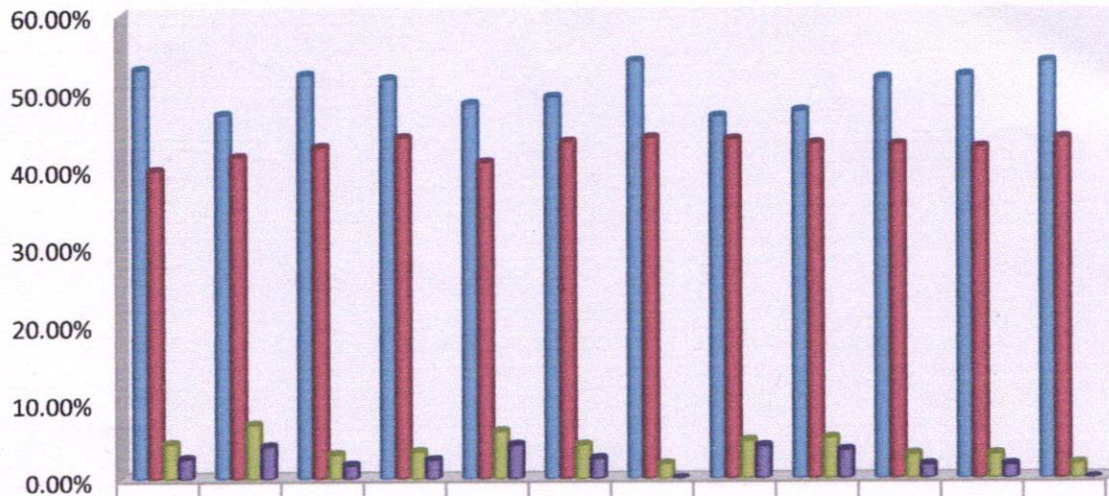

PRINCIPAL
KAILASH WOMEN'S COLLEGE
Tharamangalam-Nangavalli Main Road,
Periyasoragai P.O, Nangavalli,
SALEM-636 502



KAILASH WOMEN'S COLLEGE


(Affiliated to Periyar University, Salem) (An ISO 9001:2015 Certified Institution) Nangavalli, Salem - 636502

Alumni Feedback Analysis (2019-20)



	1	2	3	4	5	6	7	8	9	10	11	12
How do you feel being an alumni of KWC	52.92	47.07	52.21	51.68	48.49	49.38	53.98	46.90	47.61	51.85	52.21	53.98
Relevance of course content.	39.82	41.59	42.83	44.07	40.88	43.53	44.07	43.89	43.36	43.18	42.83	44.07
Career orientation in the syllabus	4.60%	7.07%	3.18%	3.53%	6.19%	4.42%	1.94%	4.95%	5.30%	3.18%	3.18%	1.94%
Overall academic atmosphere in the syllabus.	2.65%	4.24%	1.76%	2.47%	4.42%	2.65%	0.00%	4.24%	3.71%	1.76%	1.76%	0.00%
Faculty motivation during course study												
Library facility												
Training and Placement												
Availability of library & e-resources.												
Campus environment												
Canteen facility.												
Transport facility.												
Ability of curriculum to foster Entrepreneurship												




PRINCIPAL
KAILASH WOMEN'S COLLEGE
 Tharamangalam-Nangavalli Main Road
 Periyasoragai P.O, Nangavalli.
 SALEM-636 502



KAILASH WOMEN'S COLLEGE

(Affiliated to Periyar University, Salem) (An ISO 9001:2015 Certified Institution) Nangavalli, Salem - 636502

1.4.1 Institution obtains feedback on the syllabus and its transaction at the institution

INTERNAL QUALITY ASSURANCE CELL FEEDBACK ANALYSIS (2019-20)

Our college regularly collects feedback from the students which comprises of syllabus completion, communication skills, teaching methodology and others in various aspects. Feedback is received from students, teachers, employer, alumni and parents during various meetings held in each academic session. Feedback forms are available in our college website so that the students can voice out whenever an issue is raised.

FEEDBACK ANALYSIS – PARENTS

Feedback collected from parents has been submitted to IQAC on various aspects related to academics, teaching-learning, fees structure and extracurricular for the academic year. The representations of feedback analysis are as follows.

Summary table for Parents feedback (2019-20)

Sl. No.	Particulars	Excellent	Good	Average	Fair
1	Quality of teaching.	45.56%	34.45%	16.40%	1.59%
2	Fees Structure.	34.92%	32.28%	30.69%	2.12%
3	Course Availability.	61.90%	21.69%	13.76%	2.65
4	Curricular and co-curricular Activities conducted by the college.	48.68%	40.21%	8.99%	2.12%
5	How do you rate the value and relevance of the course for career?	43.92%	35.45%	16.93%	3.70%
6	How do you rate the environment/ discipline of the college?	40.21%	35.45%	24.34%	3.70%
7	Are the authorities easily approachable regarding any queries?	43.92%	28.04%	23.34%	1.59%
8	Are you satisfied with information given about your daughter?	65.08%	19.58%	12.17%	3.17%
9	Teaching Methods followed by the Department	34.39%	31.75%	30.16%	3.70%



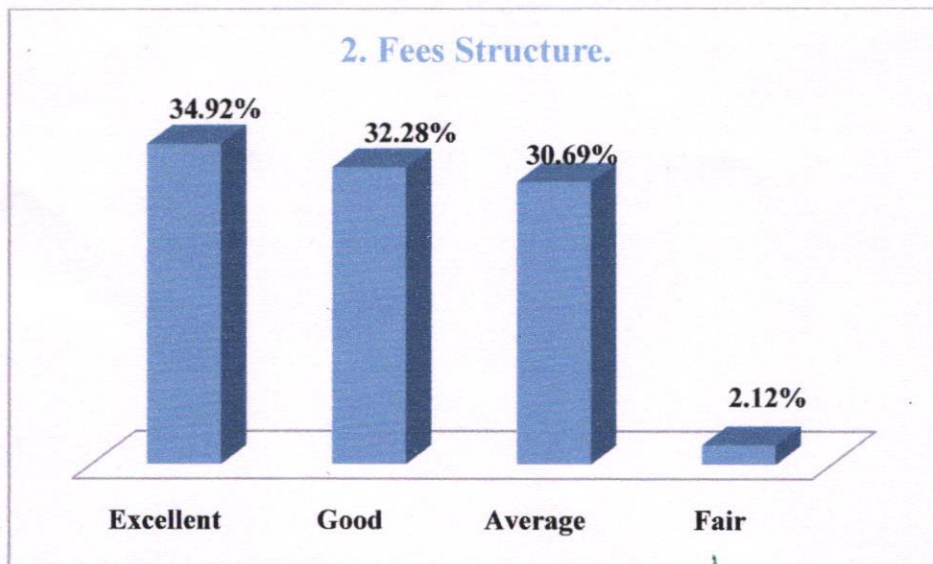
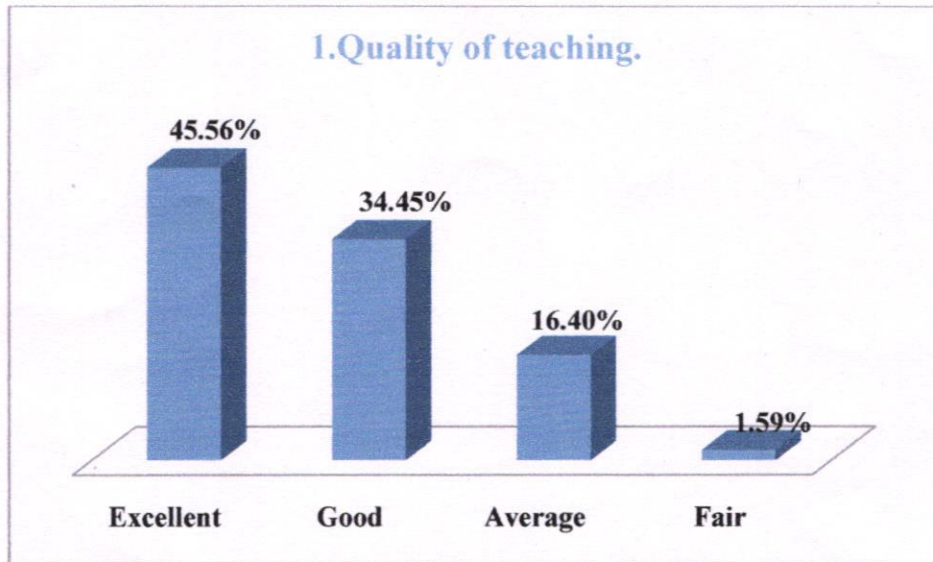
PRINCIPAL
KAILASH WOMEN'S COLLEGE
Tharamangalam-Nangavalli Main Road
Periyasoragai P.O. Nangavalli
SALEM-636 502



KAILASH WOMEN'S COLLEGE

(Affiliated to Periyar University, Salem) (An ISO 9001:2015 Certified Institution) Nangavalli, Salem - 636502

The feedback taken from parents (using the above questions) about the present curriculum is reveals the following facts that are in a pictorial representations.



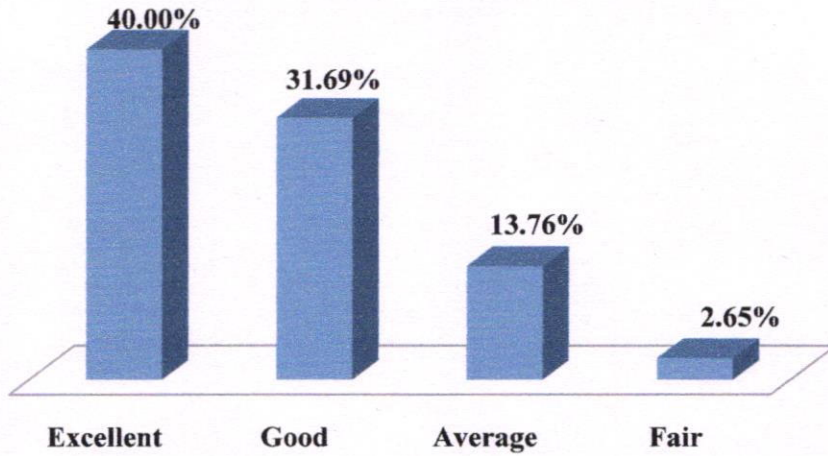
[Signature]
PRINCIPAL
KAILASH WOMEN'S COLLEGE
Tharamangalam-Nangavalli Main Road
Periyasoragai P.O, Nangavalli
SALEM-636 502



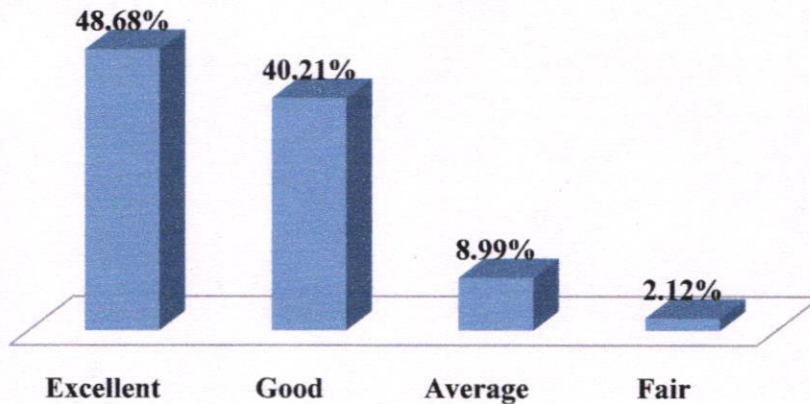
KAILASH WOMEN'S COLLEGE


(Affiliated to Periyar University, Salem) (An ISO 9001:2015 Certified Institution) Nangavalli, Salem - 636502

3. Course Availability.



4. Curricular and co-curricular Activities conducted by the college.



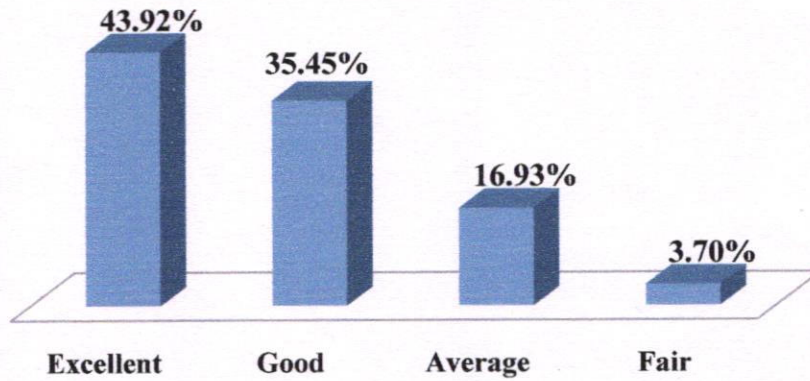

PRINCIPAL
KAILASH WOMEN'S COLLEGE
Tharamangalam-Nangavalli Main Road
Periyasoragai P.O, Nangavalli
SALEM-636 502



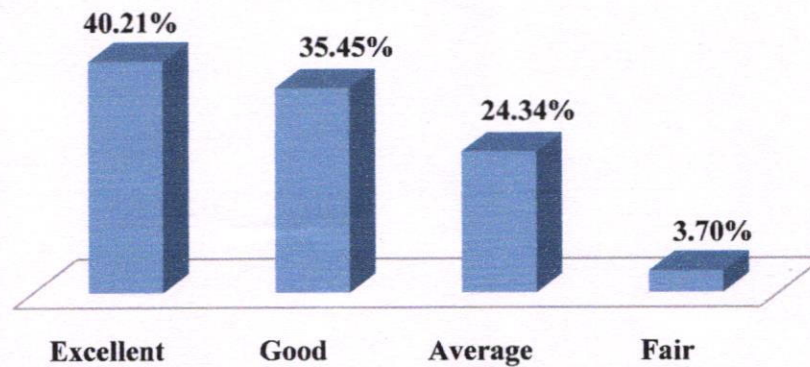
KAILASH WOMEN'S COLLEGE


(Affiliated to Periyar University, Salem) (An ISO 9001:2015 Certified Institution) Nangavalli, Salem - 636502

5. How do you rate the value and relevance of the course for career?



6. How do you rate the environment/ discipline of the college?



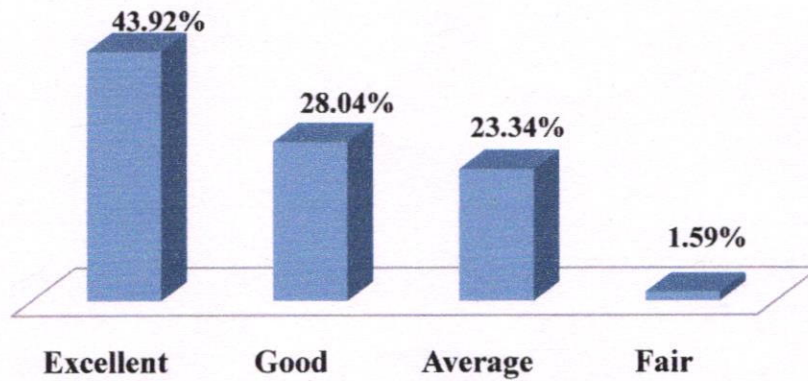

PRINCIPAL
KAILASH WOMEN'S COLLEGE
Tharamangalam-Nangavalli Main Road
Periyasoragai P.O., Nangavalli,
SALEM-636 502



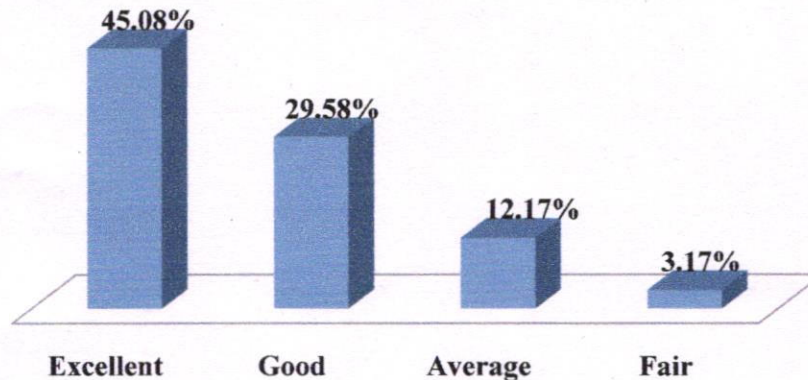
KAILASH WOMEN'S COLLEGE

(Affiliated to Periyar University, Salem) (An ISO 9001:2015 Certified Institution) Nangavalli, Salem - 636502

7. Are the authorities easily approachable regarding any queries?



8. Are you satisfied with information given about your daughter?

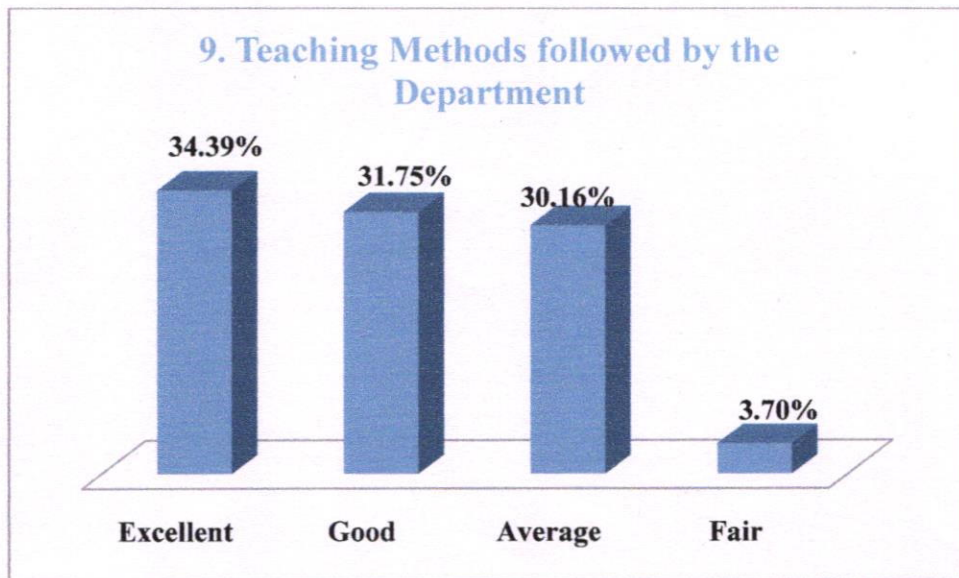



PRINCIPAL
KAILASH WOMEN'S COLLEGE
Tharamangalam-Nangavalli Main Road
Periyasoragai P.O, Nangavalli,
SALEM-636 502



KAILASH WOMEN'S COLLEGE

(Affiliated to Periyar University, Salem) (An ISO 9001:2015 Certified Institution) Nangavalli, Salem - 636502



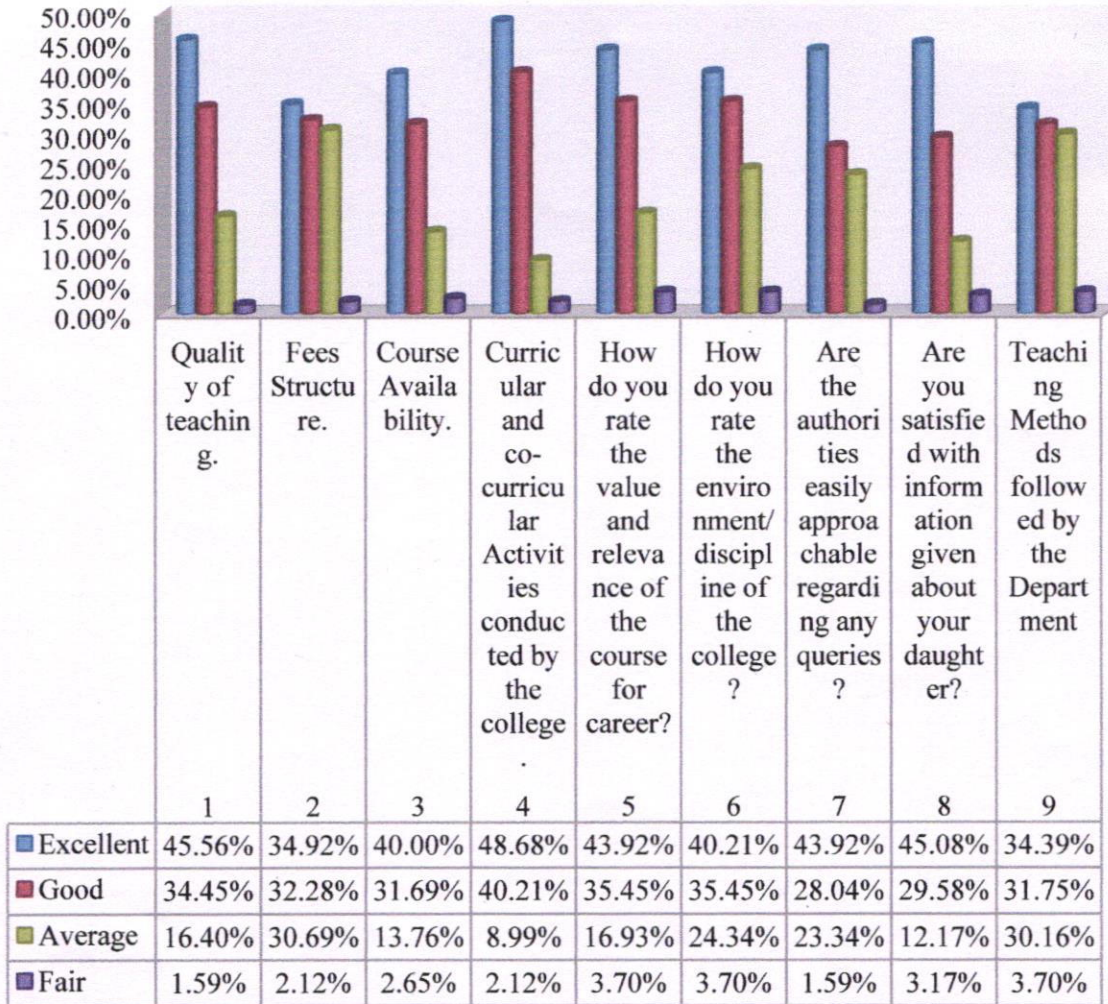
PRINCIPAL
KAILASH WOMEN'S COLLEGE
Tharamangalam-Nangavalli Main Road
Periyasoragai P.O, Nangavalli.
SALEM-636 502



KAILASH WOMEN'S COLLEGE

(Affiliated to Periyar University, Salem) (An ISO 9001:2015 Certified Institution) Nangavalli, Salem - 636502

Parents Feedback Analysis (2019-20)



[Handwritten Signature]

PRINCIPAL
KAILASH WOMEN'S COLLEGE
 Tharamangalam-Nangavalli Main Road
 Periyasoragai P.O, Nangavalli.
 SALEM-636 502



KAILASH WOMEN'S COLLEGE

(Affiliated to Periyar University, Salem) (An ISO 9001:2015 Certified Institution) Nangavalli, Salem - 636502

Department Of B.C.A

Action Taken Report (2019-20)

STUDENTS

Sl. No.	Suggestions	Action taken
1	Pupils have asked to set up additional fans in the classrooms.	Increased number of students in the classroom.

TEACHERS

Sl. No.	Suggestions	Action taken
1	Require extended library operating hours	Preparing to carry out.

EMPLOYERS

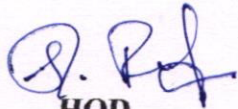
Sl. No.	Suggestions	Action Taken
1	Boosting self-assurance or self-belief	Classes for language training will be organized with the aim of enhancing the learner's confidence levels.

ALUMNI

Sl. No.	Suggestions	Action Taken
1	Pupils desire to participate in skill-building initiatives.	Students are encouraged to participate in their-collegiate events and competitions.


PARENTS

Sl. No.	Suggestions	Action taken
1	The parents are satisfied with the approach taken by the college administration.	It will be properly maintained.


HOD

HEAD OF THE DEPARTMENT
DEPARTMENT OF COMPUTER APPLICATIONS
KAILASH WOMEN'S COLLEGE
NANGAVALLI, SALEM-636 502.




Principal

PRINCIPAL
KAILASH WOMEN'S COLLEGE
Tharamangalam-Nangavalli Main Road
Periyasoragai P.O, Nangavalli
SALEM-636 502



KAILASH WOMEN'S COLLEGE

(Affiliated to Periyar University, Salem) (An ISO 9001:2015 Certified Institution) Nangavalli, Salem - 636502

Department Of Botany

Action Taken Report (2019-20)

STUDENTS

Sl. No.	Suggestions	Action taken
1	Need coaching for competitive exams	Competitive Coaching cell was initiated to meet the needs of the students.

TEACHERS

Sl. No.	Suggestions	Action taken
1	The faculty proposed organizing a meditation session for stress relief.	Yoga classes will be held once a month.

EMPLOYERS

Sl. No.	Suggestions	Action Taken
1	Scope for integration of training and research. Bridge college and corporate for collaboration work.	We are planning to increase the internship training first.

PARENTS

Sl. No.	Suggestions	Action taken
1	Specialized education for students with disabilities.	Chose to offer specialized skill development sessions.

M. Chelvi
HOD

HEAD OF THE DEPARTMENT
DEPARTMENT OF BOTANY
KAILASH WOMEN'S COLLEGE
NANGAVALLI, SALEM-636 502



[Signature]
Principal

Principal
KAILASH WOMEN'S COLLEGE
Tharamangalam-Nangavalli Main Road
Periyasoragai P.O, Nangavalli
SALEM-636 502



KAILASH WOMEN'S COLLEGE

(Affiliated to Periyar University, Salem) (An ISO 9001:2015 Certified Institution) Nangavalli, Salem - 636502

Department Of Biotechnology

Action Taken Report (2019-20)

STUDENTS

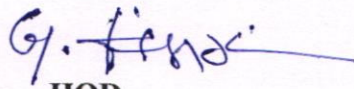
Sl. No.	Suggestions	Action taken
1	The purpose of these self- study assignments/seminars is to motivate you to learn on your own.	We recommend that heads of departments organize a higher frequency of international or national-level seminars, conference, or practical workshops to promote learning and professional development for their students and faculty members.

TEACHERS

Sl. No.	Suggestions	Action taken
1	Require focus in project endeavors.	Toppers projects can be given to students who have excelled in their academic studies (toppers) as a means to apply and further develop the theoretical knowledge they have acquired.

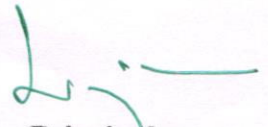
PARENTS

Sl. No.	Suggestions	Action taken
1	Reduced fees are available for students in certain circumstances.	Currently, students participating in the National Cadet Corps (NCC), sports, and economically disadvantaged backgrounds are granted a reduction in fees.


HOD

HEAD OF THE DEPARTMENT
DEPARTMENT OF BIOTECHNOLOGY
KAILASH WOMEN'S COLLEGE
NANGAVALLI, SALEM-636 502




Principal

PRINCIPAL
KAILASH WOMEN'S COLLEGE
Tharamangalam-Nangavalli Main Road
Periyasoragai P.O, Nangavalli,
SALEM-636 502